

LEASEHOLD



Apartment - First Floor (EPC Rating: B)

**55 WISSEN DRIVE, LETCHWORTH GARDEN CITY,
HERTS, SG6 1FT**

Price Guide

£250,000



First Step



2



2



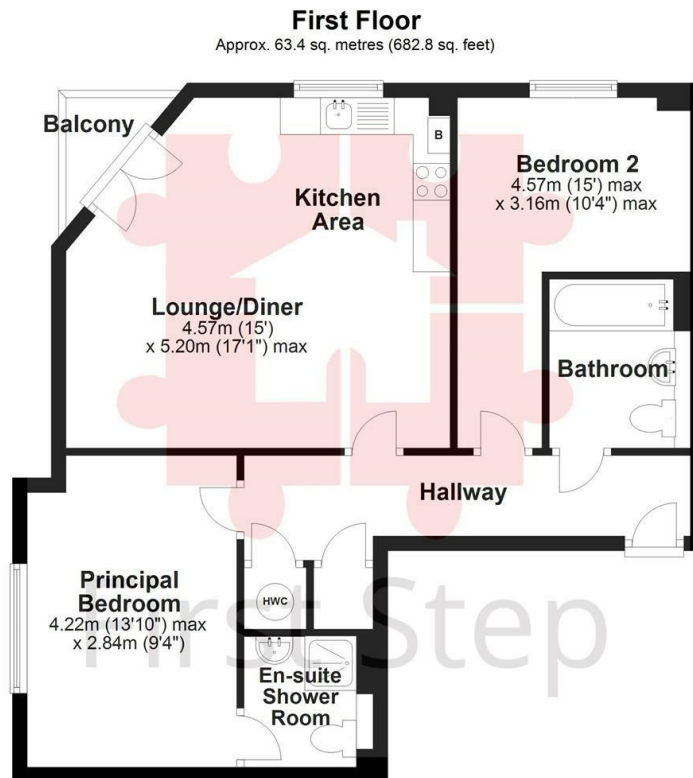
1



B

2 Bedroom Apartment - First Floor located in Letchworth Garden City

WALK-ON BALCONY... WALKING distance to STATION & TOWN CENTRE... Light & Spacious... EN-SUITE... 2 DOUBLE Bedrooms... ENTERTAINING OPEN PLAN Kitchen/Diner/Lounge... ALLOCATED PARKING...



Total area: approx. 63.4 sq. metres (682.8 sq. feet)

Council Tax Band

C

Energy Performance Graph

Energy Efficiency Rating		Current	Potential
Very energy efficient - lower running costs			
(92 plus) A			
(81-91) B		82	82
(69-80) C			
(55-68) D			
(39-54) E			
(21-38) F			
(1-20) G			
Not energy efficient - higher running costs			
England & Wales	EU Directive 2002/91/EC		

Call us on

01462 659 730

sales@firststep.ltd

www.firststep.ltd

Agents Note: Whilst every care has been taken to prepare these particulars, they are for guidance purposes only. All measurements are approximate and are for general guidance purposes only and whilst every care has been taken to ensure their accuracy, they should not be relied upon and potential buyers are advised to recheck the measurements.



First Step