



12 Chamberlain Road East Finchley, London, N2 8JS

A lovely five-bedroom, mid terraced family house located on a cul-de-sac in East Finchley.

The property offers generous living space throughout and includes a bright reception room with wood flooring, a separate fully fitted kitchen with ample storage and direct access to a clean and well maintained private garden. There are five good sized bedrooms, two bathrooms and an additional guest WC.

Ideally located within easy reach of East Finchley amenities, local schools, green spaces and transport links.

£3,500

12 Chamberlain Road

East Finchley, London, N2 8JS



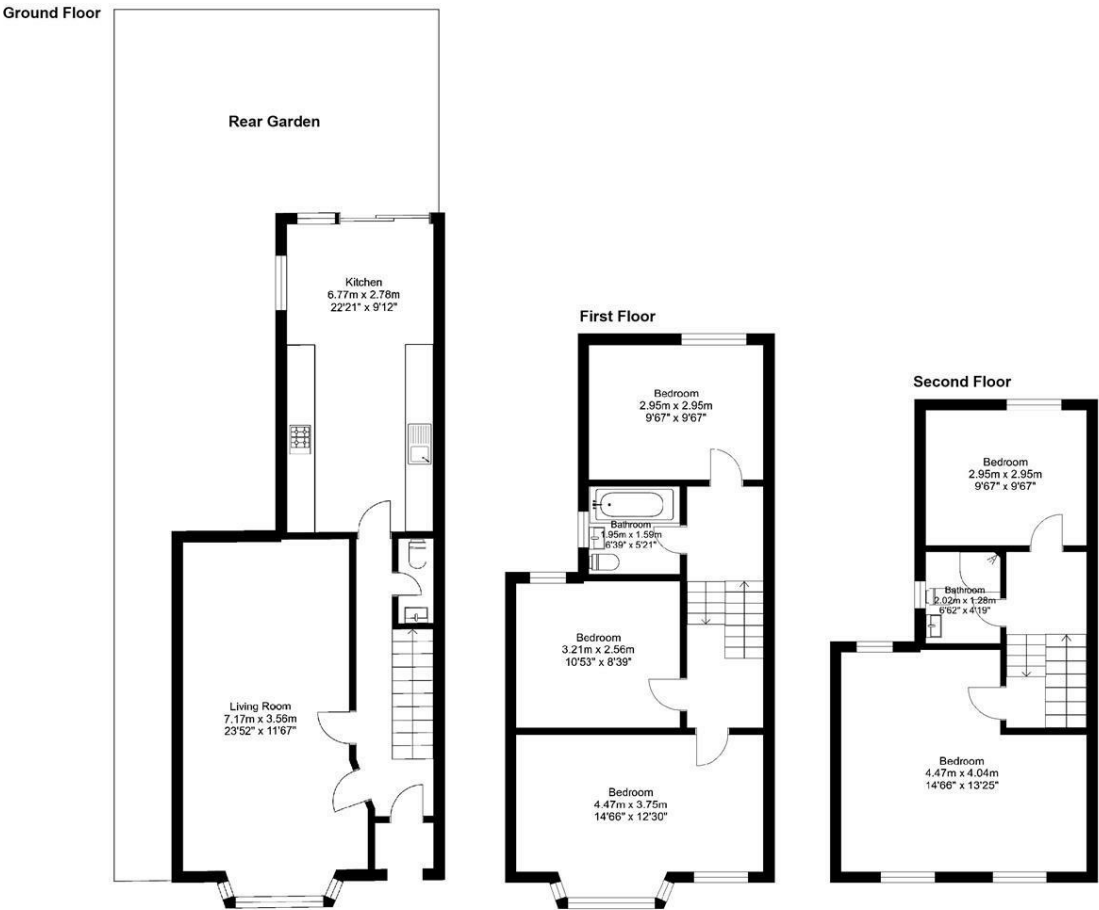
- Available 18th February
- Unfurnished
- 5 Bedrooms
- 2 Bathrooms (+ Guest W.C)
- Through Reception Room



[Directions](#)



Floor Plan



Total floor area 125.88 sq. meters (1354.96 sq. feet)
This floor plan is for illustrative purpose only. It's not draw to scale any measurements, floor areas (including total floor area) openings are approximate. Plan produce for Heaven Estate Agents produced by www.evolve-uk.co.uk

These particulars, whilst believed to be accurate are set out as a general outline only for guidance and do not constitute any part of an offer or contract. Intending purchasers should not rely on them as statements of representation of fact, but must satisfy themselves by inspection or otherwise as to their accuracy. No person in this firms employment has the authority to make or give any representation or warranty in respect of the property.

129 High Road, East Finchley, London, N2 8AJ
Tel: 0208 883 2200 Email: sales@haven-estateagents.com

Energy Efficiency Rating		
	Current	Potential
Very energy efficient - lower running costs		
(92 plus) A		83
(81-91) B		
(69-80) C		
(55-68) D	66	
(39-54) E		
(21-38) F		
(1-20) G		
Not energy efficient - higher running costs		
England & Wales		EU Directive 2002/91/EC 