



## 27 Kingsley Road , London, NW6 7RH

Haven offer this beautiful three bedroom terraced period residence located on this quiet tree lined turning a short walk from Queen Park cafes, shops, restaurants and transport facilities. Offering many original features the house boasts a through reception, kitchen dinner, three double bedrooms, family bathroom and offers extension potential (STPP).

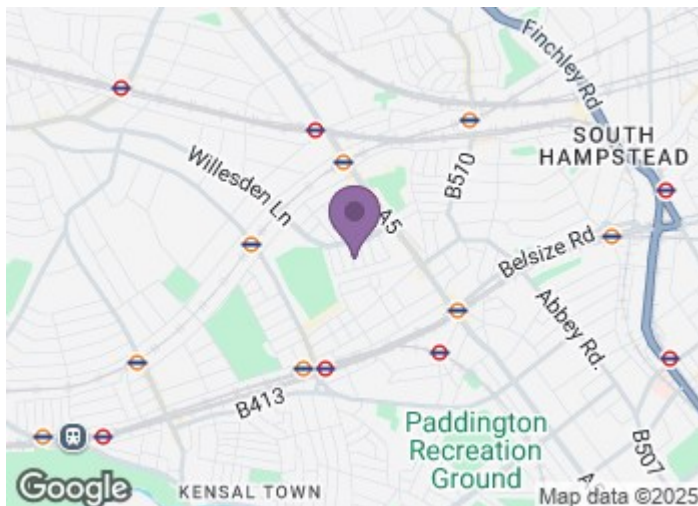
**£1,250,000**

# 27 Kingsley Road

, London, NW6 7RH



- Through Reception
- Kitchen Dining Room
- Three Double Bedrooms
- Family Bathroom
- Beautiful Garden
- Extension Potential (STPP)

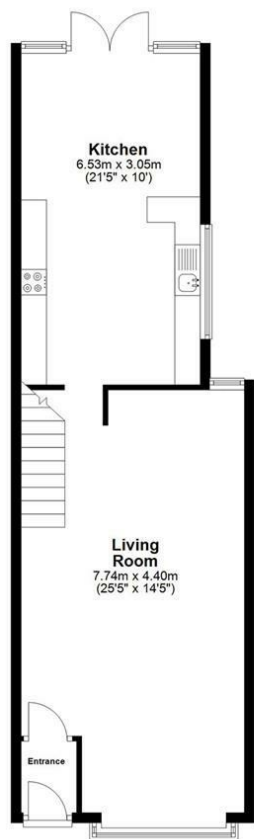


[Directions](#)

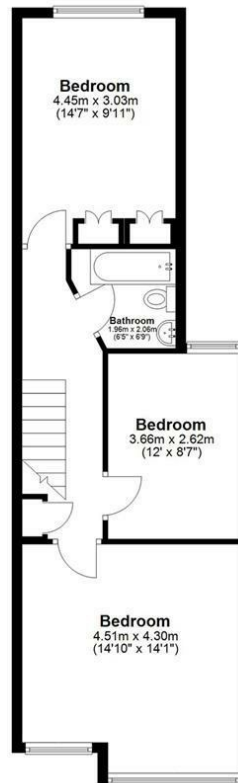




Floor Plan



GROUND FLOOR



FIRST FLOOR



**Evolve**  
www.evolve-uk.co.uk

This floor plan is for illustrative purposes only.  
Floor areas (including total floor area) openings are approximate.

TOTAL FLOOR AREA

Sq. meters	111.6
Sq. feet	1201.3

These particulars, whilst believed to be accurate are set out as a general outline only for guidance and do not constitute any part of an offer or contract. Intending purchasers should not rely on them as statements of representation of fact, but must satisfy themselves by inspection or otherwise as to their accuracy. No person in this firms employment has the authority to make or give any representation or warranty in respect of the property.

129 High Road, East Finchley, London, N2 8AJ  
Tel: 0208 883 2200 Email: sales@haven-estateagents.com

Energy Efficiency Rating		
	Current	Potential
Very energy efficient - lower running costs		
(92 plus) <b>A</b>		
(81-91) <b>B</b>		
(69-80) <b>C</b>		
(55-68) <b>D</b>		
(39-54) <b>E</b>		
(21-38) <b>F</b>		
(1-20) <b>G</b>		
Not energy efficient - higher running costs		
England & Wales		
EU Directive 2002/91/EC		