



32 Kitchener Road , East Finchley, N2 8AS

We offer this well two bedroom ground floor maisonette located in this ever popular turning just off East Finchley High Road N2. This property offers character throughout, a good sized reception, kitchen, direct access to low maintenance garden and bathroom. Located minutes from shops, East Finchley underground station and is offered chain free with a share of the freehold.

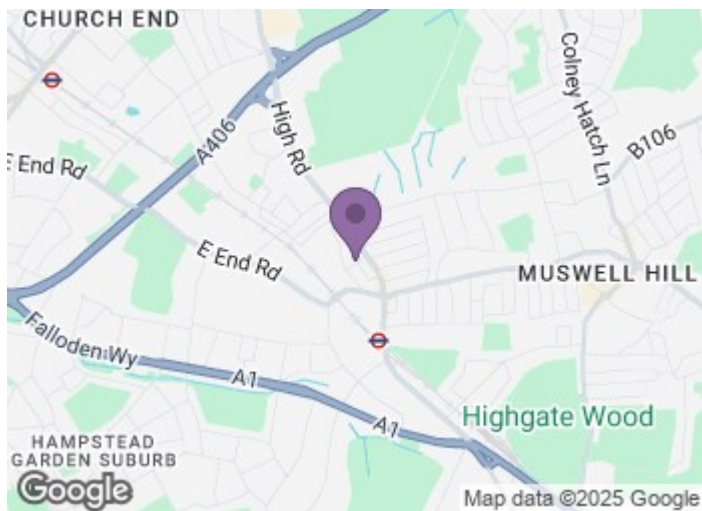
£550,000

32 Kitchener Road

, East Finchley, N2 8AS



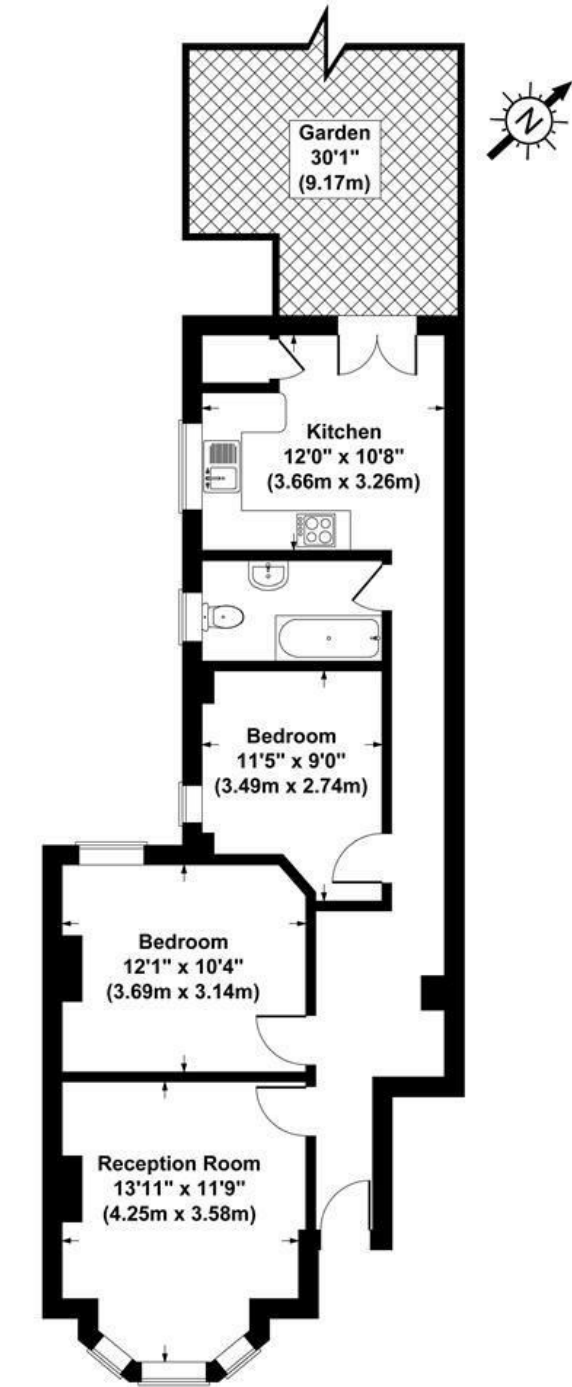
- Reception
- Bathroom
- Ground Floor
- Kitchen
- Chain Free
- Direct Access To Own Garden
- Two Bedrooms
- Share of Freehold



[Directions](#)



Floor Plan



Kitchener Road London N3
Gross Internal Area 700 sq ft / 65 sq metres
Not to Scale. Produced by The Plan Portal 2025
For Illustrative Purposes Only.

These particulars, whilst believed to be accurate are set out as a general outline only for guidance and do not constitute any part of an offer or contract. Intending purchasers should not rely on them as statements of representation of fact, but must satisfy themselves by inspection or otherwise as to their accuracy. No person in this firms employment has the authority to make or give any representation or warranty in respect of the property.

Energy Efficiency Rating		
	Current	Potential
Very energy efficient - lower running costs		
(92 plus) A		
(81-91) B		
(69-80) C		
(55-68) D		
(39-54) E		
(21-38) F		
(1-20) G		
Not energy efficient - higher running costs		
England & Wales		
EU Directive 2002/91/EC		