



30c Church Lane , East Finchley, N2 8DT

For sale is this rarely available and truly unique one bedroom mews house located in The Old East Finchley Village N2. This four year old architecturally designed freehold house is presented in immaculate condition and is arranged over three floors consisting of a fully fitted bespoke kitchen, guest WC, reception, double bedroom with built in wardrobe, en-suite wet room and courtyard area.

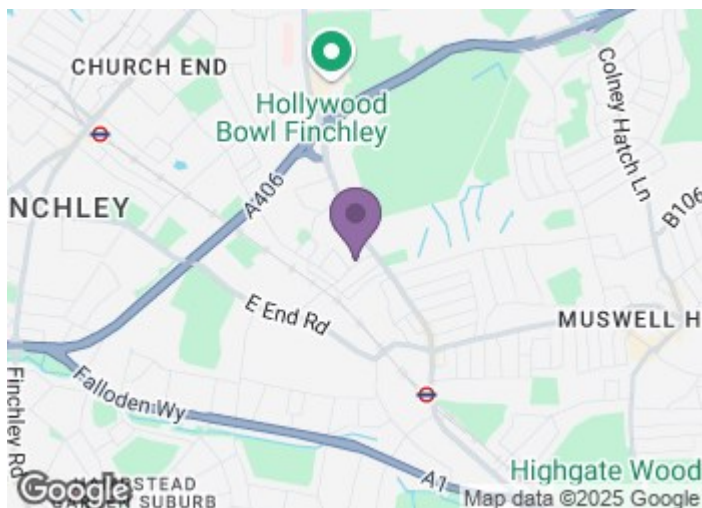
£430,000

30c Church Lane

, East Finchley, N2 8DT



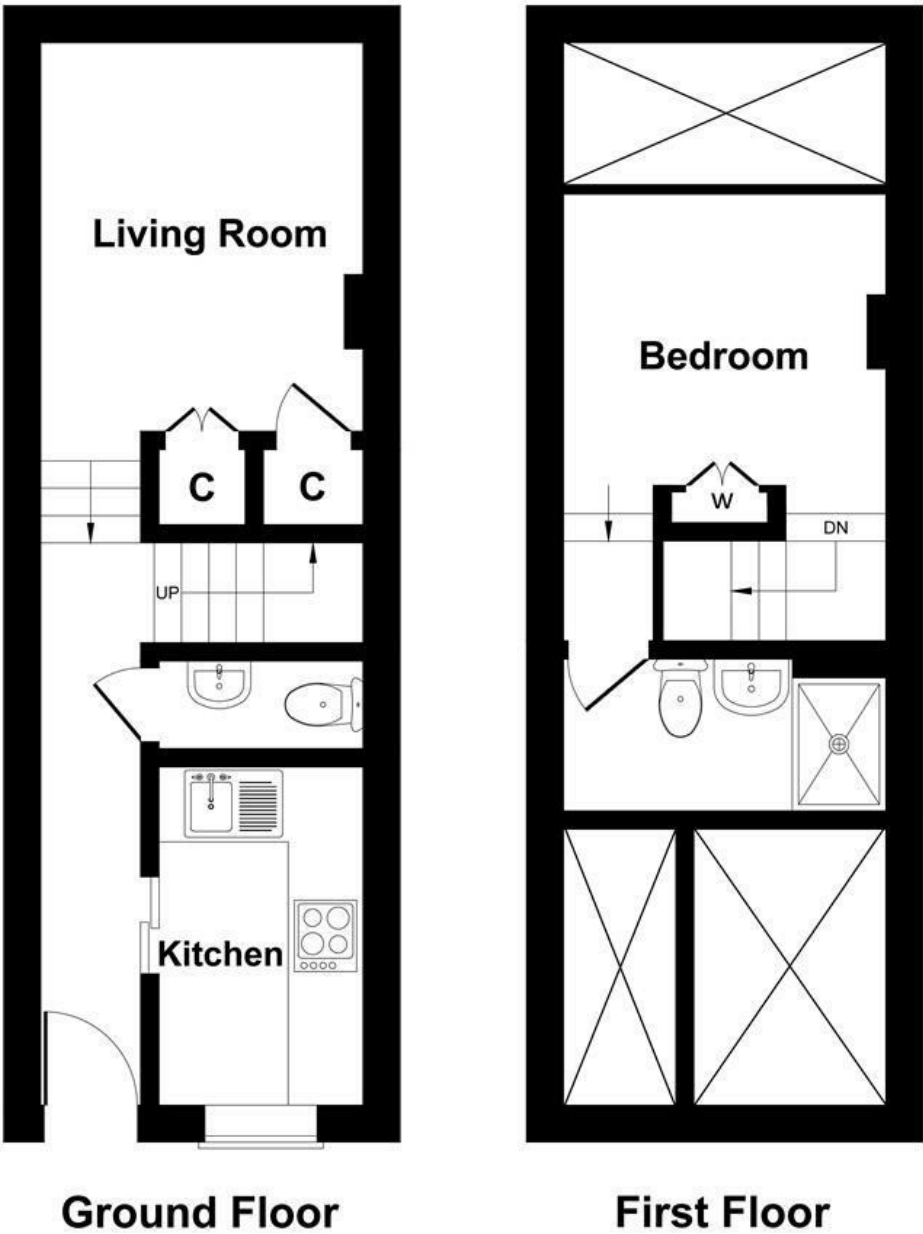
- Mews House
- Guest WC
- Courtyard Area
- Freehold
- Reception
- Double Bedroom
- Arranged Over Three Floors
- Bespoke Fitted Kitchen
- En-Suite Wet Room
- Architecturally Designed



[Directions](#)



Floor Plan



Church Lane, London, N2
Gross Internal Area 527 sq ft / 49 sq metres
Not to Scale. Produced by The Plan Portal 2022
For Illustrative Purposes Only.

These particulars, whilst believed to be accurate are set out as a general outline only for guidance and do not constitute any part of an offer or contract. Intending purchasers should not rely on them as statements of representation of fact, but must satisfy themselves by inspection or otherwise as to their accuracy. No person in this firms employment has the authority to make or give any representation or warranty in respect of the property.

Energy Efficiency Rating		
	Current	Potential
Very energy efficient - lower running costs		
(92 plus) A		
(81-91) B		
(69-80) C		
(55-68) D		
(39-54) E		
(21-38) F		
(1-20) G		
Not energy efficient - higher running costs		
England & Wales		
EU Directive 2002/91/EC		