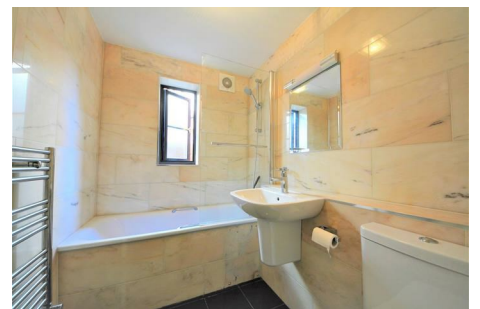




estate agents



Flat 2 Lydford Court 27a Lydford Road , London, NW2 5QZ

An excellent one double bedroom ground floor flat situated in a small well maintained block close to transport. The flat is in good decorative order and comprises open plan reception, dining leading to kitchen, modern bathroom, double bedroom. Communal garden. Off-street parking on first come basis

Unfurnished - Available 2/9/24

Unfortunately not suitable for pets

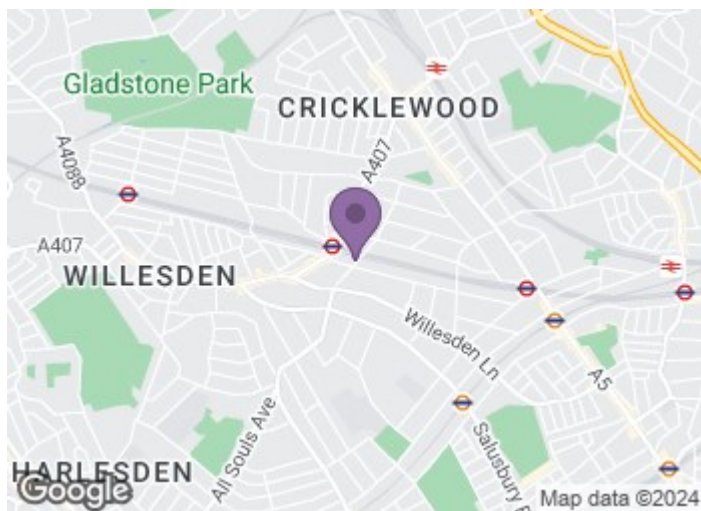
*Disclosure - A Director of Haven Estate Agents has an interest in this property.

£1,700 Per month

Flat 2 Lydford Court 27a Lydford Road , London, NW2 5QZ



- Communal garden and off-street parking
- Open plan reception and dining area leading to kitchen
- Available from 2nd September
- Good Location
- Modern bathroom and double bedroom
- Spacious and Bright
- Unfurnished



[Directions](#)





Floor Plan

These particulars, whilst believed to be accurate are set out as a general outline only for guidance and do not constitute any part of an offer or contract. Intending purchasers should not rely on them as statements of representation of fact, but must satisfy themselves by inspection or otherwise as to their accuracy. No person in this firm's employment has the authority to make or give any representation or warranty in respect of the property.

129 High Road, East Finchley, London, N2 8AJ
Tel: 0208 883 2200 Email: sales@haven-estateagents.com

Energy Efficiency Rating		Current	Potential
<i>Very energy efficient - lower running costs</i>			
(92 plus) A			
(81-91) B			
(69-80) C		76	78
(55-68) D			
(39-54) E			
(21-38) F			
(1-20) G			
<i>Not energy efficient - higher running costs</i>			
England & Wales		EU Directive 2002/91/EC	