



estate agents



Flat 2, Elmwood Court Elm Gardens

, London, N2 0TQ

Haven are pleased to offer this rarely available three bedroom, two bathroom duplex maisonette located in the quiet cul-de-sac turning just off Church Lane, N2. This unique home has been kept to a very high standard and is in great condition, is arranged over the first & second floor, offers over 1460 sq ft of living space and is flooded with natural light throughout. Other benefits include Reception Dining Room, own private landscaped garden, and is minutes away from the Old East Finchley Village

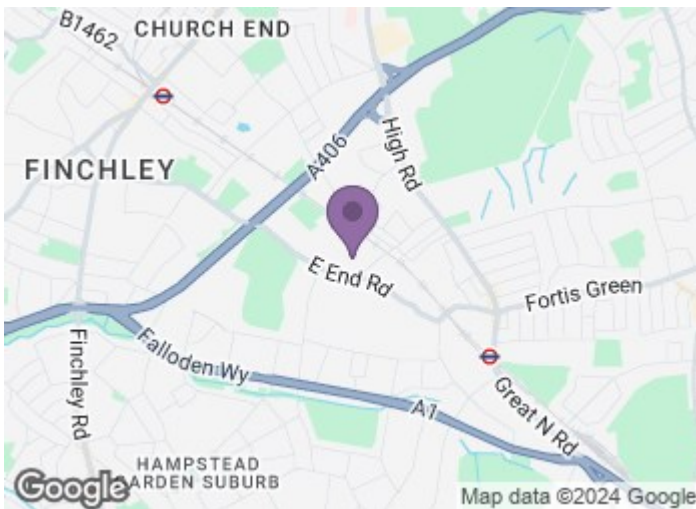
£700,000

Flat 2, Elmwood Court Elm Gardens

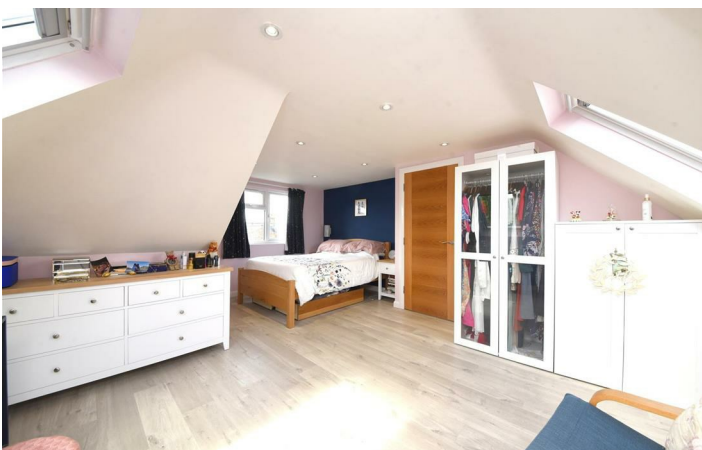
, London, N2 0TQ



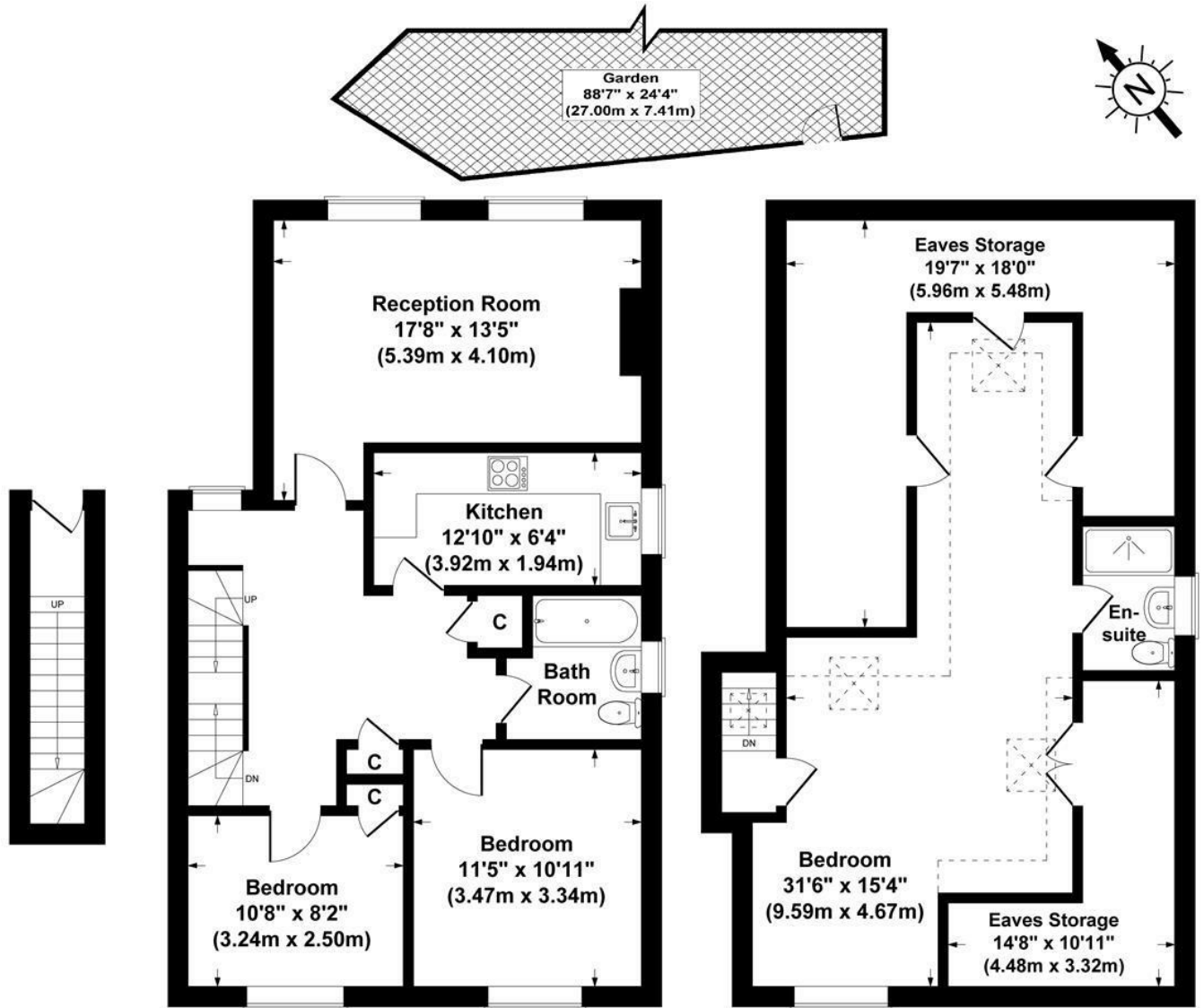
- Three Bedrooms
- Reception Dining Room
- Long Lease
- Two Bathrooms
- Own Private Landscaped Garden
- First & Second Floor
- Kitchen
- Quiet Cul-De-Sac Location



[Directions](#)



Floor Plan



Ground Floor

First Floor

Second Floor

Elmwood Court, London, N2
Gross Internal Area 1460 sq ft / 135.6 sq metres
 Not to Scale. Produced by The Plan Portal 2024

These particulars, whilst believed to be accurate are set out as a general outline only for guidance and do not constitute any part of an offer or contract. Intending purchasers should not rely on them as statements of representation of fact, but must satisfy themselves by inspection or otherwise as to their accuracy. No person in this firm's employment has the authority to make or give any representation or warranty in respect of the property.

129 High Road, East Finchley, London, N2 8AJ
 Tel: 0208 883 2200 Email: sales@haven-estateagents.com

Energy Efficiency Rating		Current	Potential
Very energy efficient - lower running costs			
(92 plus)	A		
(81-91)	B		
(69-80)	C		
(55-68)	D	59	
(39-54)	E		
(21-38)	F		
(1-20)	G		
Not energy efficient - higher running costs			
England & Wales		EU Directive 2002/91/EC	