



estate agents



64 Hertford Road

, London, N2 9BU

We offer this beautifully presented three/four double bedroom semi-detached family house located in this sought after County Roads just off the High Road, East Finchley. This well proportioned Victorian property offers three receptions, two bathrooms large kitchen and well maintained garden and offers the potential to extend into the loft (STPP). Located close to Martins Primary School and the Archer Academy with all shopping amenities and East Finchley underground station within walking distance.

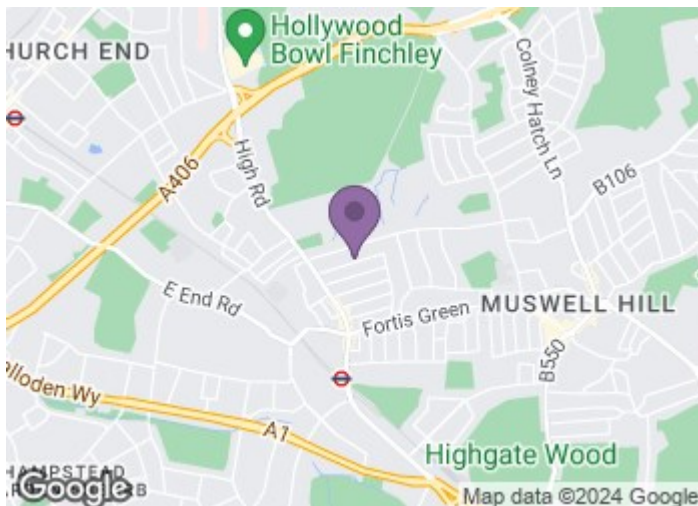
£1,200,000

64 Hertford Road

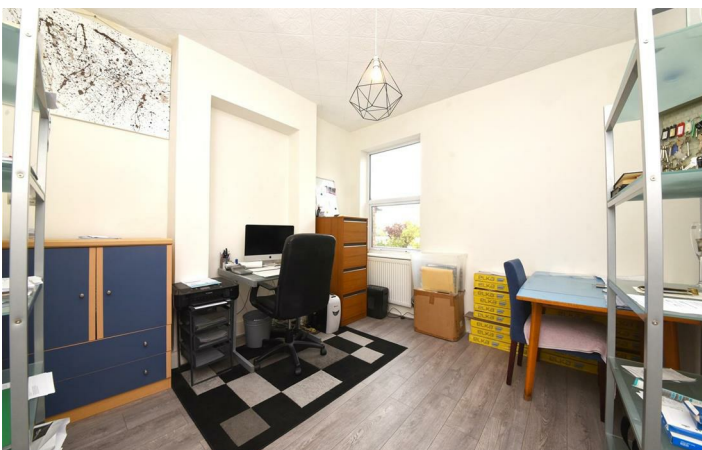
, London, N2 9BU



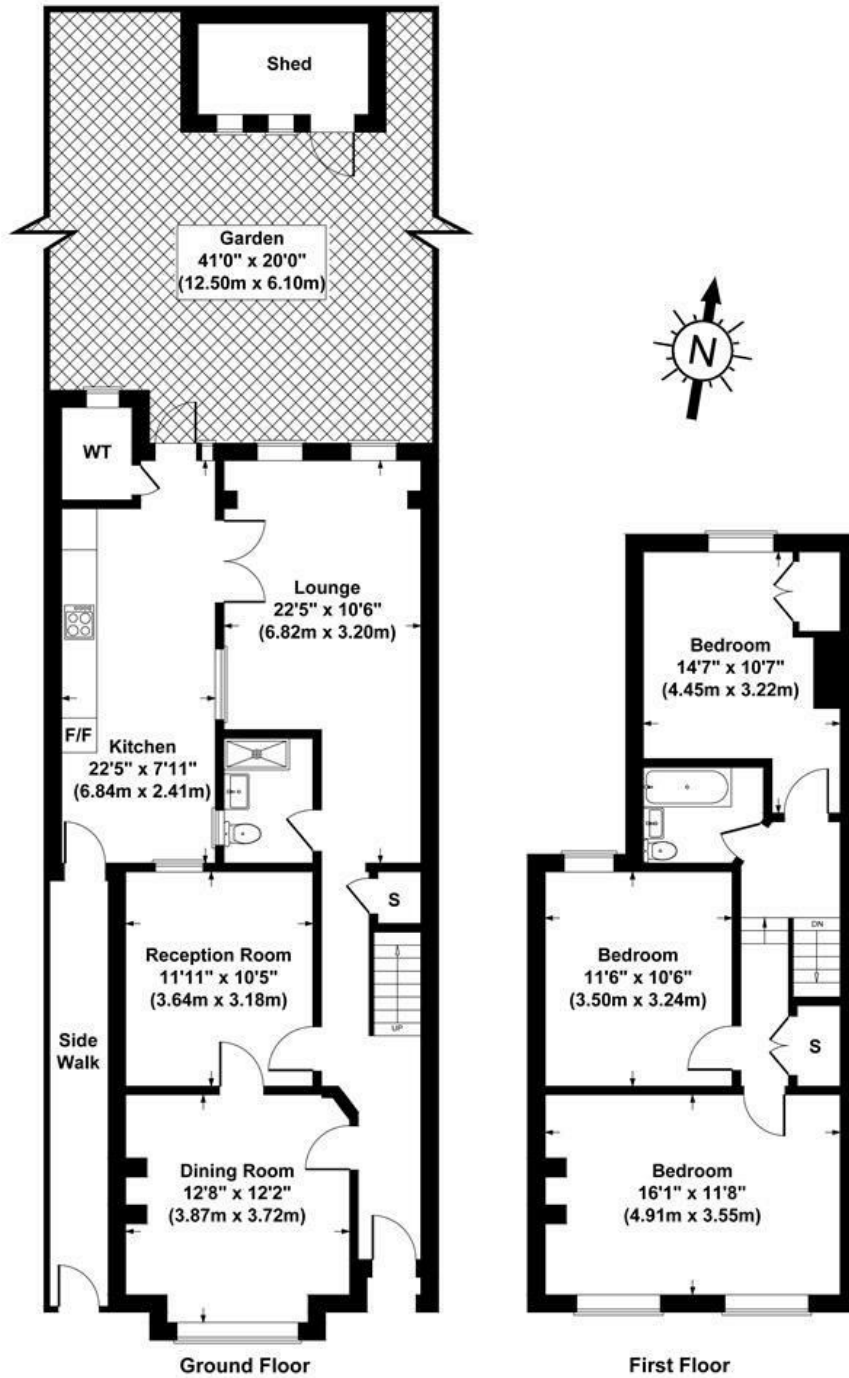
- Three Double Bedrooms
- Two Bathrooms
- Three Reception Rooms
- Well Maintained Garden
- Large Kitchen
- Loft Extension Potential (STPP)



[Directions](#)



Floor Plan



Hertford Road, London, N2
Gross Internal Area 1453 sq ft / 135 sq metres
 Not to Scale. Produced by The Plan Portal 2023
For Illustrative Purposes Only.

These particulars, whilst believed to be accurate are set out as a general outline only for guidance and do not constitute any part of an offer or contract. Intending purchasers should not rely on them as statements of representation of fact, but must satisfy themselves by inspection or otherwise as to their accuracy. No person in this firm's employment has the authority to make or give any representation or warranty in respect of the property.

129 High Road, East Finchley, London, N2 8AJ
 Tel: 0208 883 2200 Email: sales@haven-estateagents.com

Energy Efficiency Rating		Current	Potential
Very energy efficient - lower running costs			
(92 plus) A			
(81-91) B			
(69-80) C			
(55-68) D			
(39-54) E			
(21-38) F			
(1-20) G			
Not energy efficient - higher running costs			
England & Wales		EU Directive 2002/91/EC	