



JAMES
ANDERSON



TO LET

Seaforth Lodge, Barnes, SW13

£2,500 Per Month

Per Month

A beautifully refurbished two-bedroom apartment located in a sought-after Art Deco building on Barnes High Street. This bright and spacious property features two generous double bedrooms, a newly fitted kitchen with high-end appliances, and a stylish modern bathroom with a shower over the bath. The impressive reception room offers ample space for both living and dining areas, creating an ideal setting for relaxation and entertaining.



Two Double Bedrooms



Immaculate Bathroom



Bright Reception Room



Modern Kitchen



EPC D / Council Tax D / Deposit £2,884.61



Barnes Bridge Station



St Osmond's Primary School



Barnes Village Location



Furnished Apartment

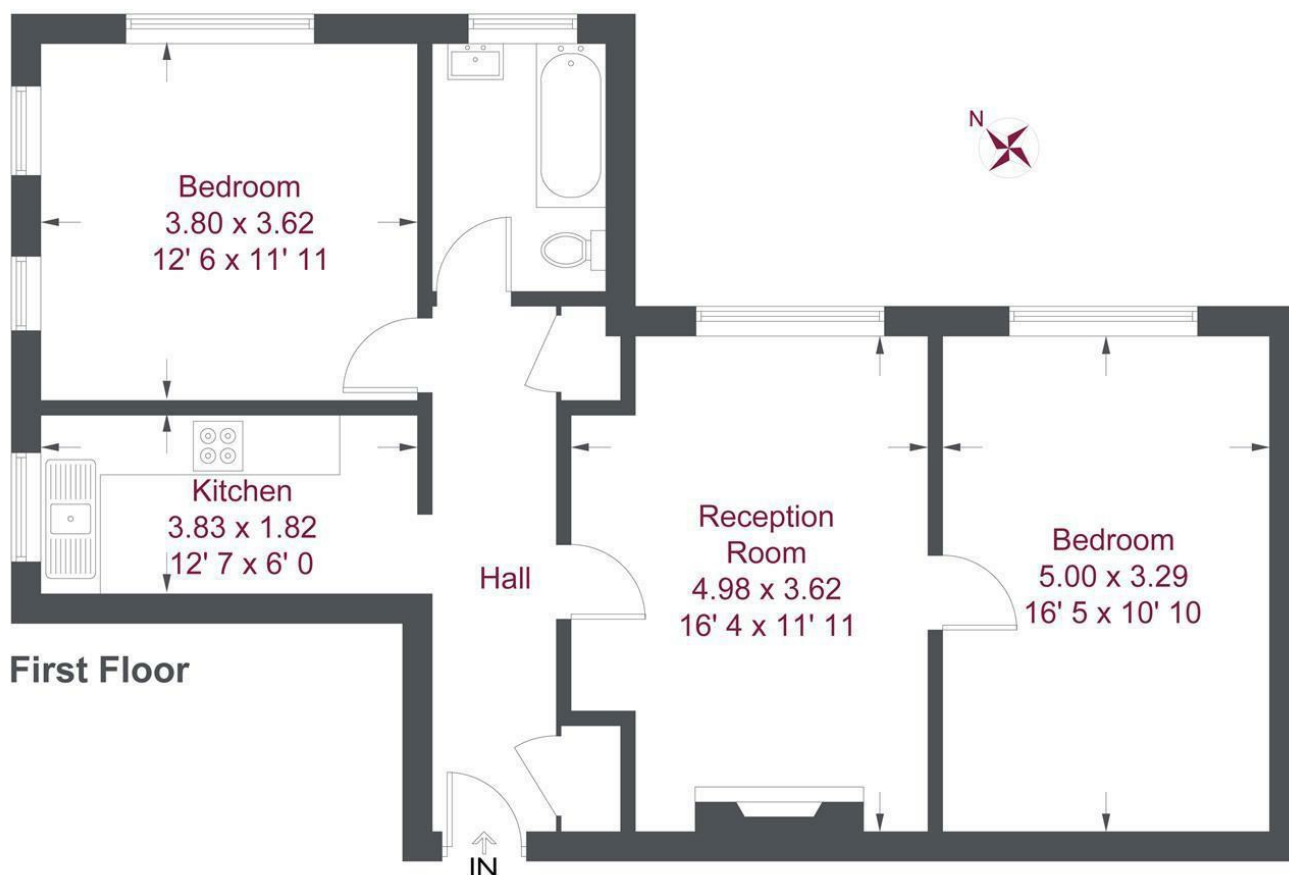


12 Month Minimum Term / Holding Deposit £576.92



OPEN 7 DAYS A WEEK • Weekdays until 9pm • Weekends until 5pm

0208 878 8688



Seaforth Lodge

Approximate Gross Internal Area = 772 sq ft / 71.7 sq m

Not to scale, for guidance only and must not be relied upon as a statement of fact
All measurements and areas are approximate only and have been prepared in accordance with the current edition of the RICS Code of Measuring Practice

Energy Efficiency Rating		
	Current	Potential
Very energy efficient - lower running costs		
(92 plus) A		
(81-91) B		
(69-80) C		
(55-68) D		
(39-54) E		
(21-38) F		
(1-20) G		
Not energy efficient - higher running costs		
	68	80
England & Wales	EU Directive 2002/91/EC	

Environmental Impact (CO ₂) Rating		
	Current	Potential
Very environmentally friendly - lower CO ₂ emissions		
(92 plus) A		
(81-91) B		
(69-80) C		
(55-68) D		
(39-54) E		
(21-38) F		
(1-20) G		
Not environmentally friendly - higher CO ₂ emissions		
England & Wales	EU Directive 2002/91/EC	

