



JAMES
ANDERSON

96 Wyatt Drive
Barnes SW13
£1,250,000



96 Wyatt Drive Barnes SW13

A fabulous, modern, riverside apartment, full of natural light and situated in the desirable Barnes Waterside development (located off Trinity Church Road) that enjoys the benefit of communal gardens and underground parking. This spacious (approx. 1334 square feet) apartment is arranged to provide two double bedrooms, both with en-suite shower/bathrooms and fitted wardrobes, with the main bedroom benefitting from a balcony. There is a light and spacious double reception room, with a larger balcony providing superb views over the River Thames. Furthermore, the property boasts a fully fitted kitchen/breakfast room, and ample dining space can be found in the main reception room. Holst Mansions has a lift service and is very well maintained throughout. Hammersmith Tube station is nearby with the District and Hammersmith and City Lines, along with excellent bus links into the City and the West End. The River Thames, local shopping and pubs are all within easy reach. Local schools include The Pauls School, The Harroddian School and The Swedish School to name a few. The property is available for sale with no onward chain.















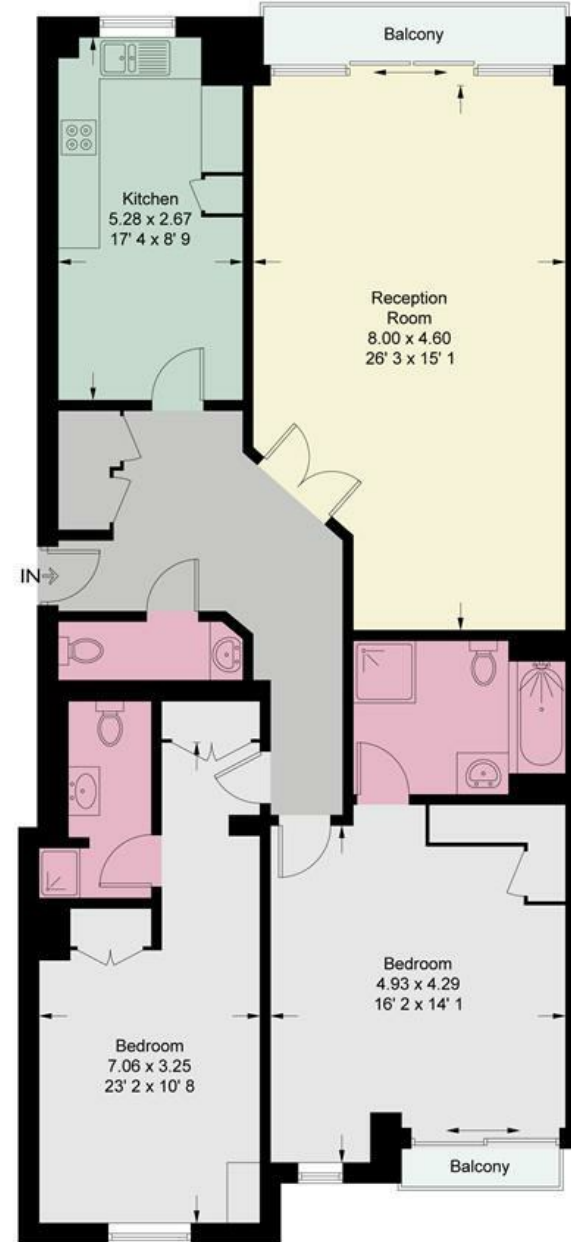


Holst Mansions

Approximate Gross Internal Area = 1334 sq ft / 123.9 sq m



JAMES
ANDERSON



Fourth Floor



JAMES
ANDERSON

This plan is not to scale and must be used as layout guidance only. All measurements and areas are approximate and should not be relied upon to provide accurate information. This plan must not be relied upon when making property valuations, design considerations or any other such relevant decisions. We accept no responsibility or liability (whether in contract, tort or otherwise) in relation to any loss whatsoever arising from or in connection with any use of this plan or the adequacy, accuracy or completeness of it or any information within it.





64 Barnes High Street
Barnes
SW13 9LD

020 8876 0100
sales@jabarnes.co.uk
www.jamesanderson.co.uk

