



JAMES  
ANDERSON



## FOR SALE

Lifford Street, Putney, SW15

**£1,050,000**

Guide Price

This charming and rare to the market two double bedroom period home, located on the sought-after Lifford Street in Putney, beautifully combines classic character with modern comfort.

The property boasts a spacious and light-filled interior while the inviting living room, with its period features, provides a cozy yet airy space perfect for both entertaining and unwinding. The kitchen is well-equipped and functional, ideal for preparing meals or enjoying casual dining. Upstairs offers two spacious double bedrooms and an excellent sized bathroom suite,

With its traditional charm, tasteful finishes, and a lovely rear garden, this property is the perfect blend of contemporary living and period elegance.

Lifford Street offers a wonderful blend of peaceful residential living and easy access to a wide range of amenities. Situated in a desirable area of South West London, the street is lined with charming period homes, creating a tranquil and attractive environment. The location is ideal for those who enjoy the convenience of being close to Putney's vibrant high street, which offers an array of cafes, restaurants, shops, and boutiques. For outdoor enthusiasts, the nearby Putney Heath and the Thames Path provide plenty of green space and opportunities for walking, cycling, and enjoying the riverside.

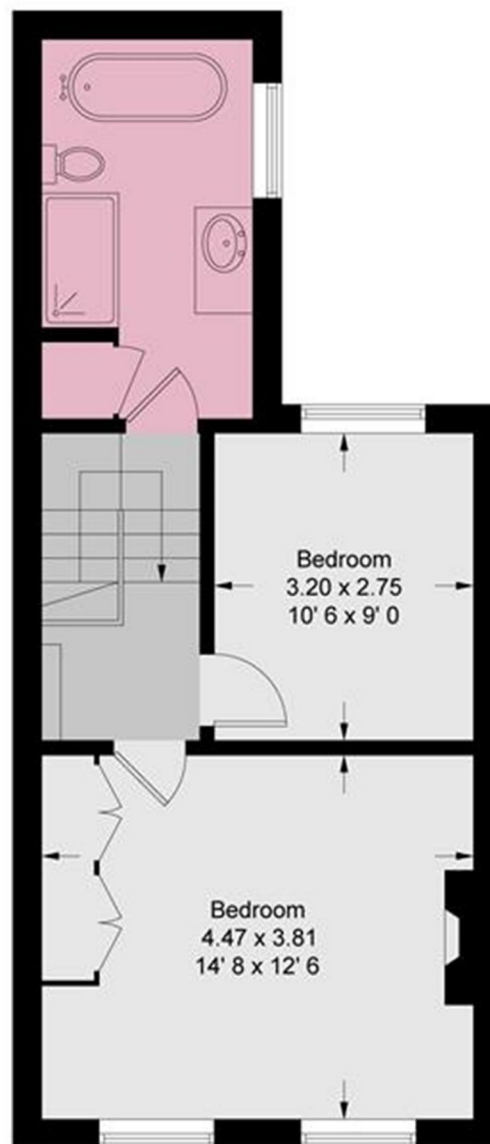
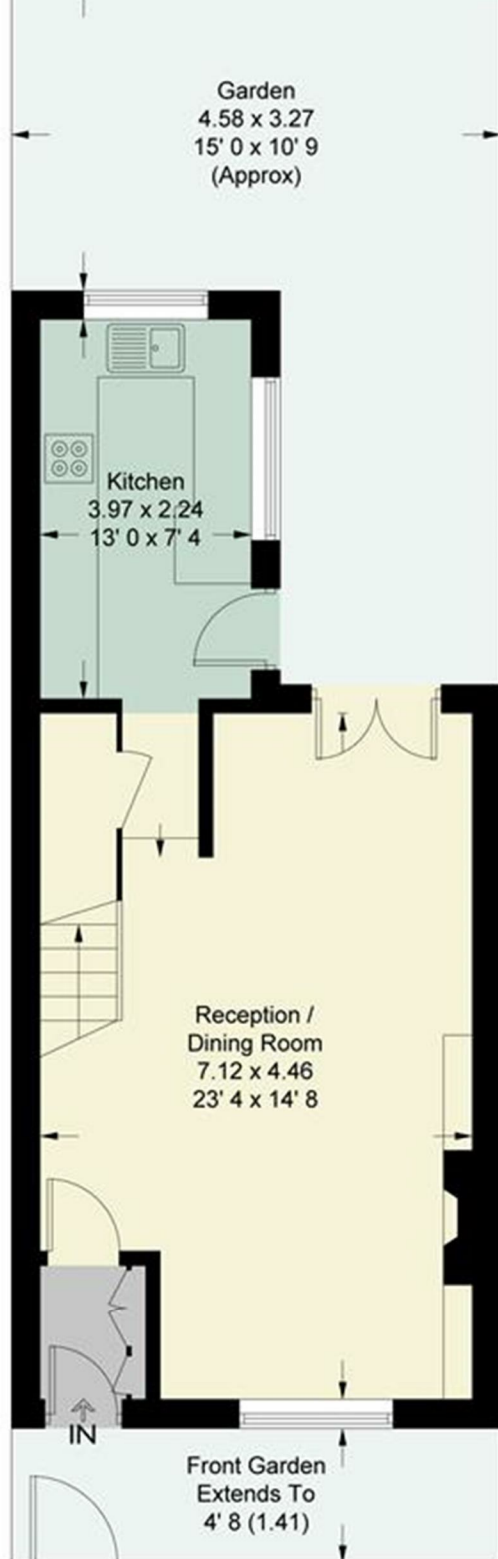
Transport links are excellent, with Putney mainline station offering quick connections into central London, as well as several nearby bus routes. The area is also well-served by local schools and has a family-friendly atmosphere, making it a popular choice for both professionals and families. Lifford Street offers the perfect balance of peaceful residential living with close proximity to everything that makes Putney such a sought-after area.

Tenure - Freehold  
EPC Rating - D  
Council Tax Band - F



OPEN 7 DAYS A WEEK • Weekdays until 9pm • Weekends until 5pm

020 8788 6611



**First Floor**  
443 sq ft / 41.2 sq m

