



**JAMES  
ANDERSON**



## **FOR SALE**

Holford Way, London, SW15

**£500,000**

Guide Price

Situated in the prestigious Queen Mary's Place Development set back from the road is this superb top floor two double bedroom, two bathroom modern build apartment providing ample living space suited for entertaining while being offered to the market chain free.

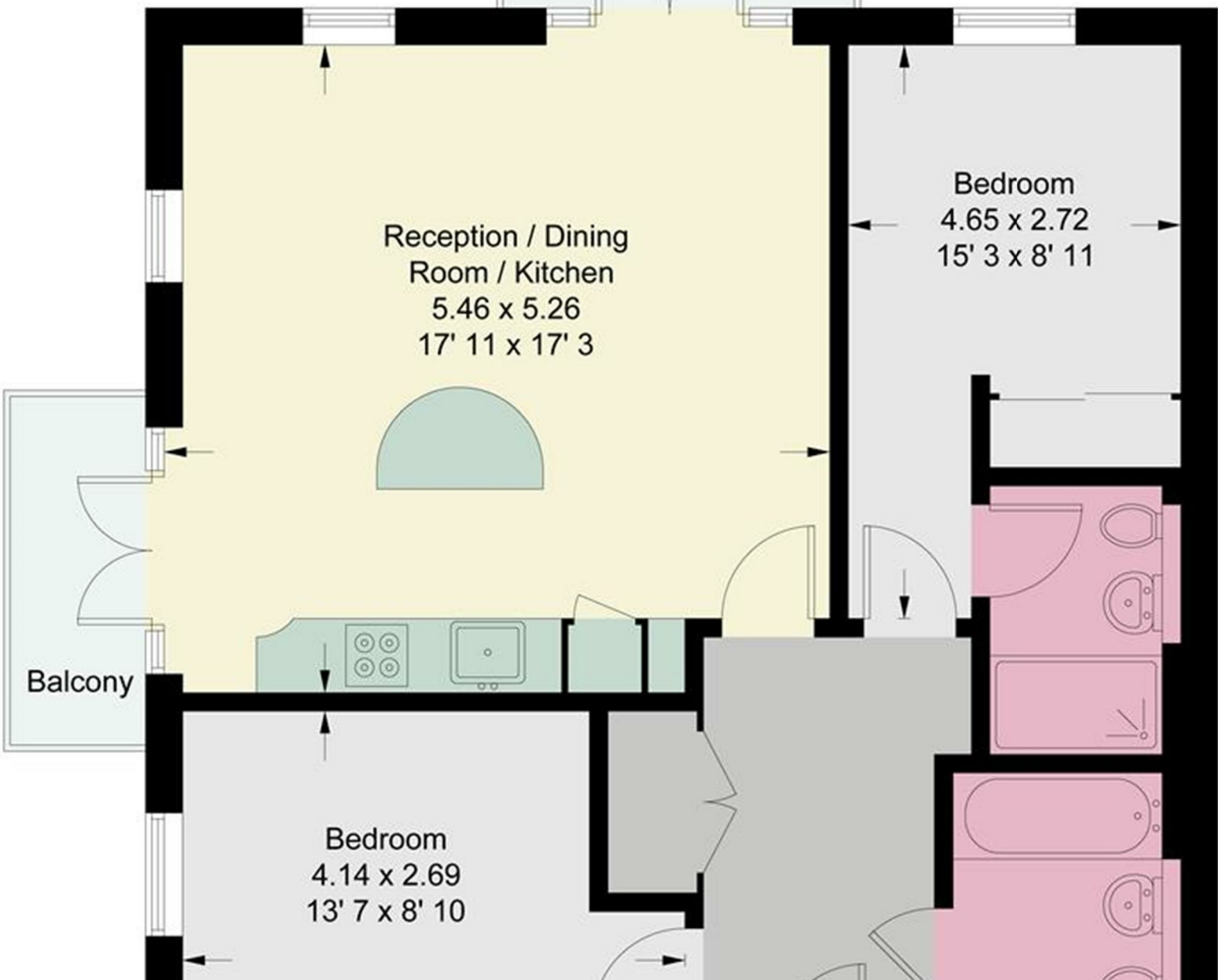
This secure, well presented home has fob entry and intercom, as well as 24 hour security with accommodation comprising of two double bedrooms with built in storage, a three piece bathroom suite, three piece shower suite, hallway storage and a large kitchen/lounge with two balconies while providing secure allocated parking.

The development has a stunning Grade Two listed rose gardens, communal gardens as well as a brilliant sized gym for residents.



OPEN 7 DAYS A WEEK • Weekdays until 9pm • Weekends until 5pm

020 8788 6611



Energy Efficiency Rating		
	Current	Potential
<i>Very energy efficient - lower running costs</i>		
(92 plus) <b>A</b>		
(81-91) <b>B</b>		
(69-80) <b>C</b>		
(55-68) <b>D</b>		
(39-54) <b>E</b>		
(21-38) <b>F</b>		
(1-20) <b>G</b>		
<i>Not energy efficient - higher running costs</i>		
<b>England &amp; Wales</b>	EU Directive 2002/91/EC	

Environmental Impact (CO <sub>2</sub> ) Rating		
	Current	Potential
<i>Very environmentally friendly - lower CO<sub>2</sub> emissions</i>		
(92 plus) <b>A</b>		
(81-91) <b>B</b>		
(69-80) <b>C</b>		
(55-68) <b>D</b>		
(39-54) <b>E</b>		
(21-38) <b>F</b>		
(1-20) <b>G</b>		
<i>Not environmentally friendly - higher CO<sub>2</sub> emissions</i>		
<b>England &amp; Wales</b>	EU Directive 2002/91/EC	

