



**JAMES
ANDERSON**

Sefton Street
London SW15
Guide Price £1,100,000



Sefton Street London SW15

Being placed on the market for the first time since constructed in 1978 is this wonderful family home spread over three floors offering ample living space while situated in the heart of West Putney close to highly regarded schools, green open spaces, transport links and the river Thames.

This home is one of five which were re-built following bomb damage to the previous houses in World War II and has been lovingly cared for an updated over the years by the previous owner.

The ground floor provides open plan living with tiled floors, fitted kitchen with breakfast bar and sizeable reception/dining area suited for entertaining leading to the low maintenance rear garden suited for the upcoming summer months.

The first floor provides two excellent sized double bedrooms alongside a three piece bathroom suite and three piece shower room while the second floor provides an exceptionally spacious bedroom with fitted wardrobes and en-suite bathroom.

Homes like these are rare to the market and a viewing is highly recommended.

Sefton Street is situated in the heart of West Putney and affords easy access to the shopping and transport facilities of the Lower Richmond Road and Central Putney. Putney Bridge Underground and Putney Mainline are found just a ten minute walk away. There are numerous local bus routes providing easy access into the City, West End and the River Thames Embankment is a short walk from this charming property.

Tenure - Freehold

Council Tax - F

EPC Rating - D













LOUIS VUITTON







Sefton Street

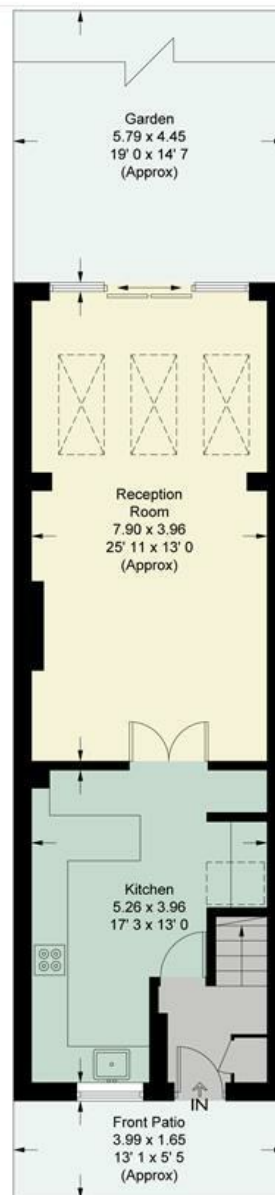
Approximate Gross Internal Area = 1276 sq ft / 118.6 sq m
(Excluding Reduced Headroom / Eaves)

Reduced Headroom / Eaves = 96 sq ft / 8.9 sq m

Total = 1372 sq ft / 127.5 sq m

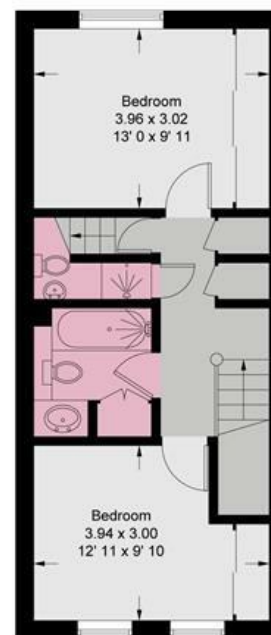


JAMES
ANDERSON

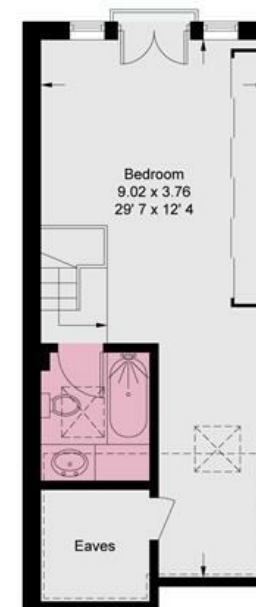


Ground Floor
568 sq ft / 52.8 sq m
(Including Reduced Headroom)

= Reduced headroom below 1.5m / 5'0



First Floor
425 sq ft / 39.5 sq m



Second Floor
379 sq ft / 35.2 sq m
(Including Reduced Headroom / Eaves)



JAMES
ANDERSON

This plan is not to scale and must be used as layout guidance only. All measurements and areas are approximate and should not be relied upon to provide accurate information. This plan must not be relied upon when making property valuations, design considerations or any other such relevant decisions. We accept no responsibility or liability (whether in contract, tort or otherwise) in relation to any loss whatsoever arising from or in connection with any use of this plan or the adequacy, accuracy or completeness of it or any information within it.





78 Lower Richmond Road
Putney
SW15 1LL

020 8788 6611
sales@japutney.co.uk
www.jamesanderson.co.uk

