



**JAMES  
ANDERSON**

Lower Richmond Road  
London SW14  
£575,000



## Lower Richmond Road London SW14

A well presented split level THREE BEDROOM apartment occupying the upper floors of this HANDSOME PERIOD HOUSE. This BRIGHT and SPACIOUS home retains many of the buildings original PERIOD FEATURES and has accommodation arranged to provide three bedrooms, one family bathroom and an open plan kitchen/living space with a south facing Juliette balcony. There is also excellent built in storage in many of the rooms including excellent eaves storage on the second floor.

With the great outdoors at your fingertips on the Thames Path, Kew Botanical Gardens, and Richmond Park, ample transport links and road connections, outstanding-rated local schools, and easy access to Kew, Mortlake, and Richmond town centres, this gem of a flat is not to be missed.

Tenure: leasehold

Service charge: adhoc

Ground rent: £100 per year













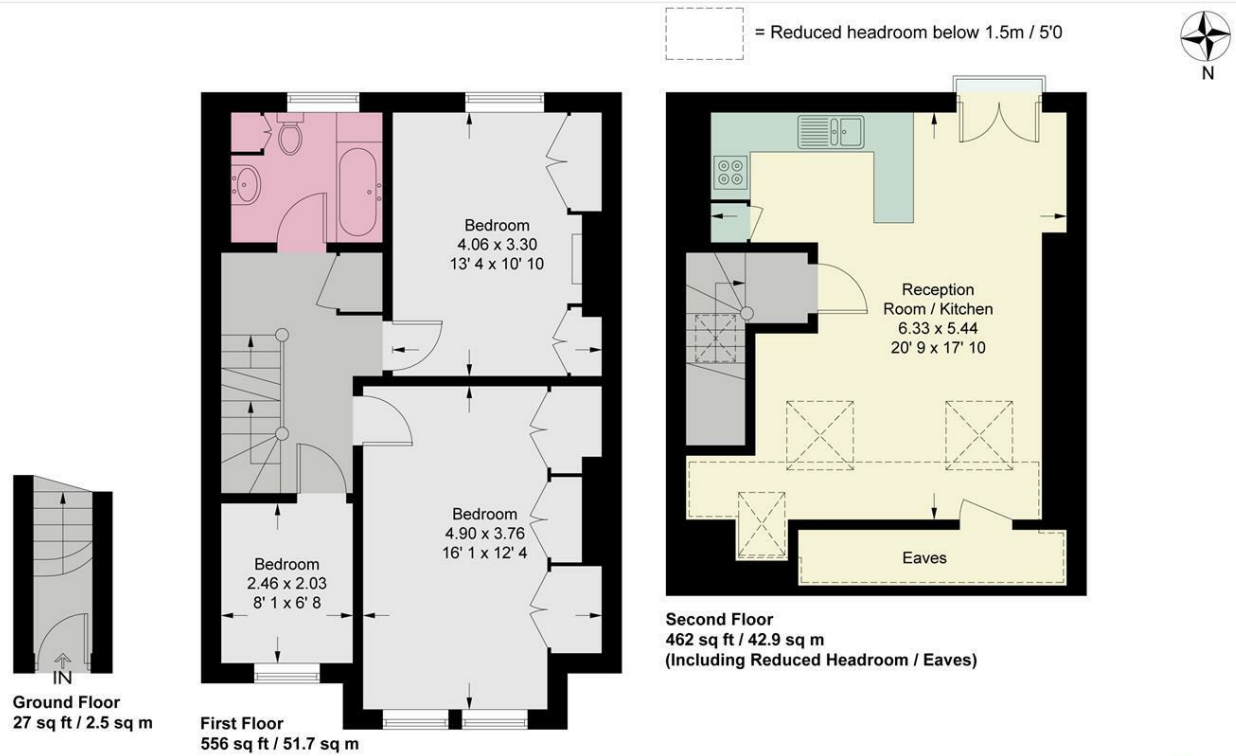






## Lower Richmond Road

Approximate Gross Internal Area = 947 sq ft / 88 sq m  
 (Excluding Reduced Headroom / Eaves)  
 Reduced Headroom / Eaves = 98 sq ft / 9.1 sq m  
 Total = 1045 sq ft / 97.1 sq m



This plan is not to scale and must be used as layout guidance only. All measurements and areas are approximate and should not be relied upon to provide accurate information. This plan must not be relied upon when making property valuations, design considerations or any other such relevant decisions. We accept no responsibility or liability (whether in contract, tort or otherwise) in relation to any loss whatsoever arising from or in connection with any use of this plan or the adequacy, accuracy or completeness of it or any information within it.





363 Upper Richmond Road West  
East Sheen  
SW14 7NX

020 8876 6611  
[sales@jasheen.co.uk](mailto:sales@jasheen.co.uk)  
[www.jamesanderson.co.uk](http://www.jamesanderson.co.uk)