



**JAMES
ANDERSON**

South Worple Way
London SW14
£1,000,000



South Worple Way London SW14

NEW DETACHED FAMILY HOME - PARKING - HIGH END
DESIGN - OFF STREET PARKING

Bright, spacious and inviting, this fabulous brand new family home situated in the delightful suburb of Mortlake. A mere five minute walk from the River Thames this exceptional detached two-floor home, with off-street parking, hosts three bedrooms two modern bathrooms, comfortable living space, an impeccably designed kitchen and dining area and a delightful private garden area.

Finished to an impressive standard the home boasts the superior quality which is characteristic of contemporary living. Employing conscientious architectural innovation to optimise light and space and with the perfect fusion of excellent fixtures and high quality finishes throughout.

Viewing is highly recommended.

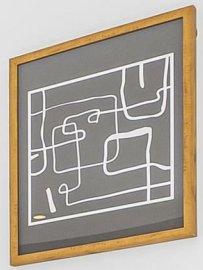










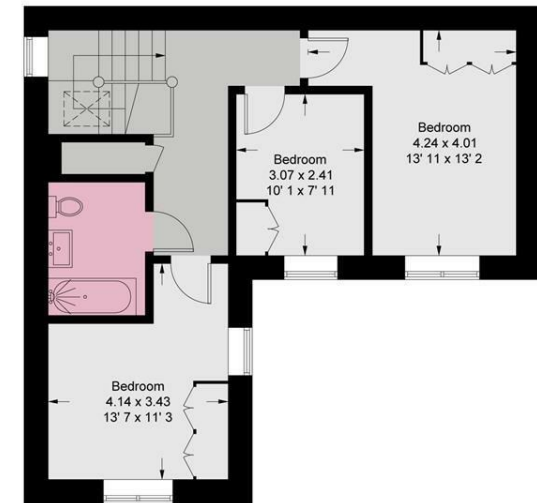
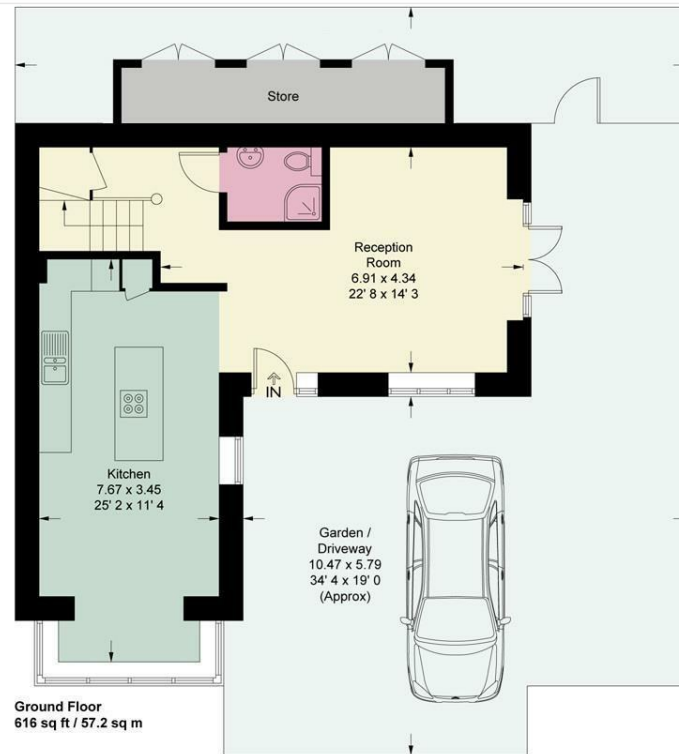






Worple Park

Approximate Gross Internal Area = 1456 sq ft / 135.3 sq m



This plan is not to scale and must be used as layout guidance only. All measurements and areas are approximate and should not be relied upon to provide accurate information. This plan must not be relied upon when making property valuations, design considerations or any other such relevant decisions. We accept no responsibility or liability (whether in contract, tort or otherwise) in relation to any loss whatsoever arising from or in connection with any use of this plan or the adequacy, accuracy or completeness of it or any information within it.





363 Upper Richmond Road West
East Sheen
SW14 7NX

020 8876 6611
sales@jasheen.co.uk
www.jamesanderson.co.uk

