



**WOOD &  
PILCHER**

*Sales, Lettings, Land & New Homes*



- Semi Detached
- Four Bedrooms
- Bathroom & En-Suite
- Good Sized Rear Garden
- On-Street Parking
- Energy Efficiency Rating: D

**Barden Road, Speldhurst**

**£460,000**

[woodandpilcher.co.uk](http://woodandpilcher.co.uk)



## Brentaw, Barden Road, Speldhurst, Tunbridge Wells, TN3 0QB

Situated in the heart of Speldhurst Village is this charming family home. The front of the house sits behind a pretty lawned garden with steps leading you to the entrance door. You step into the hallway with useful storage beneath the stairs and living room on your left. The living room is a cosy space, with attractive bay window and fitted window seat. There is a log burning stove and useful fitted storage to each side of the chimney breast. As you carry along the entrance hall you reach the dining room with space for a large table and chairs along with sliding patio doors to the side, opening onto the patio and garden. Flowing seamlessly from the dining room is the kitchen with its range of pine cabinets and cream worksurfaces. It has wide windows along the side and space for all the usual under counter white goods. There is a fitted fan oven and grill, four ring electric hob and extractor hood. From the kitchen is an additional 'snug' of home office which has power and a window and could also lend itself as a walk-in larder. Opposite a double-glazed door provides another means of access to the garden. Completing the ground floor is the bathroom, consisting of a bath with rain head shower over, WC, wash basin and frosted window. On the first floor from the spacious landing are three of the four double bedrooms along with toilet and WC. Climbing another flight of stairs and you reach the master bedroom with its wide windows capturing its elevated views and flooding the room with light. There is a double width, mirror fronted wardrobe along with plenty of space in addition to a double bed for furniture. The en-suite has a frosted window and comprises of a walk-in shower cubicle, WC, wash basin and eaves storage access. Outside there is a good-sized patio with steps leading to a generous lawn area with mature shrubs and plants bordering. At the rear is a useful shed for storage. There is access from the rear garden along the side of the house, taking you to the front.

Glazed Entrance Door leading to:

### ENTRANCE HALL:

With understairs storage, radiator.

### LIVING ROOM:

Doubled glazed bay window to front with window seat, carpets, fitted log burning stove, fitted cupboards and shelves to each side of chimney breast, radiator.

### DINING ROOM:

Radiator, cream carpets, space for large table and chairs, sliding patio door to side, fitted shelving in alcove to chimney breast.

### KITCHEN:

Picture window to side, boiler (2019) is wall mounted, one-and-a-half sink with drainer to side, ample fitted floor and wall pine cabinets, contrasting cream worktops, fitted oven and grill, fitted electric hob with extractor above, space for all the usual under counter goods, laminate flooring.

Beyond the kitchen is a study/large walk in larder, picture window to side, power, fitted cupboards.

### BATHROOM:

At rear of ground floor, frosted double glazed window, fully tiled, heated towel rail, bath with rain head shower over and glass folding screen, WC, wash basin, radiator.

### FIRST FLOOR LANDING:

Picture window to front, spacious, carpeted.



**BEDROOM:**

Picture window with far reaching views, radiator, space for free standing furniture.

**BEDROOM:**

Picture window to rear garden, fitted wardrobe, carpeted, fitted airing cupboard with hot water tank and shelf, radiator.

**BEDROOM:**

Picture window to rear, carpeted, radiator, space for a desk.

**CLOAKROOM:**

Frosted window, WC, wash basin, laminate flooring, radiator.

**BEDROOM:**

Two picture double glazed windows with far reaching views, space for double bed and extra furniture, cream carpet, large mirror fronted fitted wardrobe, two radiators.

**EN-SUITE:**

Double glazed window, wash basin with fitted storage beneath, walk in shower cubicle, WC, radiator, cream carpet, access to eaves storage.

**OUTSIDE REAR:**

Patio area to side, steps leading to a generous lawn, mature shrubs and plants and flower beds, small shed, side access to front of property.

**SITUATION:**

The property is situated in the heart of Speldhurst village. Close to the well regarded Speldhurst Primary School as well as being near a range of secondary schools. The village itself is considered highly desirable, and has a Farm shop with Café and recreation ground with play equipment. With its easy access to surrounding countryside ideal for dog walkers and nature enthusiasts as well as being a commutable distance from Tonbridge and Tunbridge Wells where there are fast and frequent services to London mainline stations. The village also offers a local post office and general store, popular public house, church and excellent community life.

**TENURE:**

Freehold

**COUNCIL TAX BAND:**

D

**VIEWING:**

By appointment with Wood & Pilcher 01892 511311

**ADDITIONAL INFORMATION:**

Broadband Coverage search Ofcom checker

Mobile Phone Coverage search Ofcom checker

Flood Risk - Check flooding history of a property England - [www.gov.uk](http://www.gov.uk)

Services - Mains Water, Gas, Electricity & Drainage

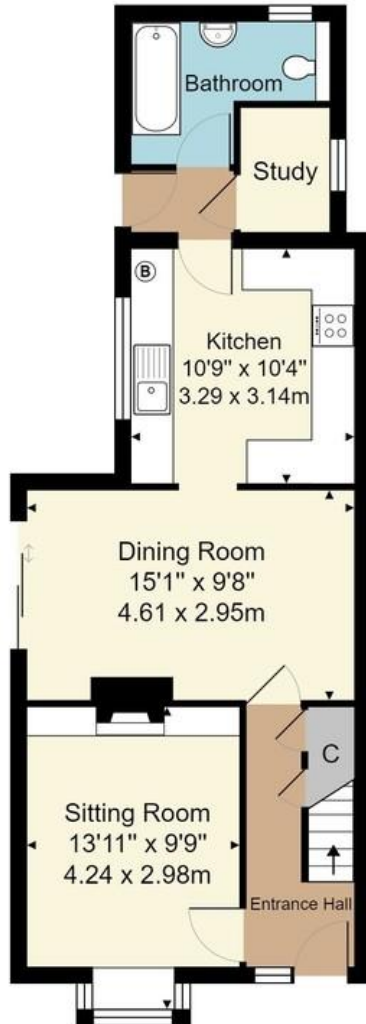
Heating - Gas Central Heating

Planning Permission - Loft conversion

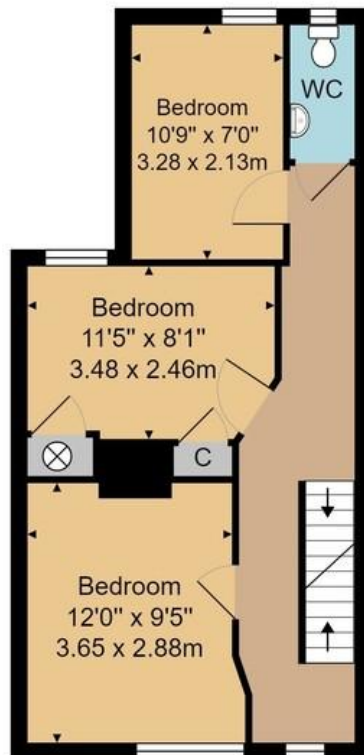




Score	Energy rating	Current	Potential
92+	A		
81-91	B		
69-80	C		78 C
55-68	D	64 D	
39-54	E		
21-38	F		
1-20	G		



**Ground Floor**



**First Floor**



**Second Floor**

Approx. Gross Internal Area 1296 ft<sup>2</sup> ... 120.4 m<sup>2</sup>

Whilst every attempt has been made to ensure the accuracy of the floor plan contained here, measurements of doors, windows, rooms and any other items are approximate and no responsibility is taken for any error, omission, or mis-statement. This plan is for illustrative purposes only and should be used as such by any prospective purchaser or tenant. The services, systems and appliances shown have not been tested and no guarantee as to their operability or efficiency can be given.

Wood & Pilcher, their clients and any joint agents give notice that: They have no authority to make or give any representations or warranties in relation to the property. Any statements on which a purchaser or Tenant wishes to rely must be checked through their Solicitors or Conveyancers. These Particulars do not form part of any offer or contract and must be independently verified. The text, photographs and floor plans are for guidance only and are not necessarily comprehensive, please also note that not everything in the photographs may be included in the sale. It should not be assumed that the property has necessary planning, Building Regulations or other consents. We have not tested any appliances, services, facilities or equipment and Purchasers or Tenants must satisfy themselves as to their adequacy and condition. We have not investigated the Title, or their existence of any Covenants or other legal matters which may affect the property.

Heathfield  
Crowborough  
Southborough  
Tunbridge Wells  
Letting & Management  
Associate London Office

01435 862211  
01892 665666  
01892 511311  
01892 511211  
01892 528888  
02070 791568

