



jt | JORGENSENTURNER



Cambridge Avenue,
London, NW6

£325,000

jt



2



1



1



E

jt

Cambridge Avenue, London, NW6

£325,000



Summary Description

Nestled on the first floor of a charming period building, this delightful two-bedroom flat on Cambridge Avenue offers a perfect blend of comfort and convenience. Ideally located on the borders of Queens Park and Maida Vale, this property is presented in good condition and is an excellent choice for first-time buyers or investors alike.

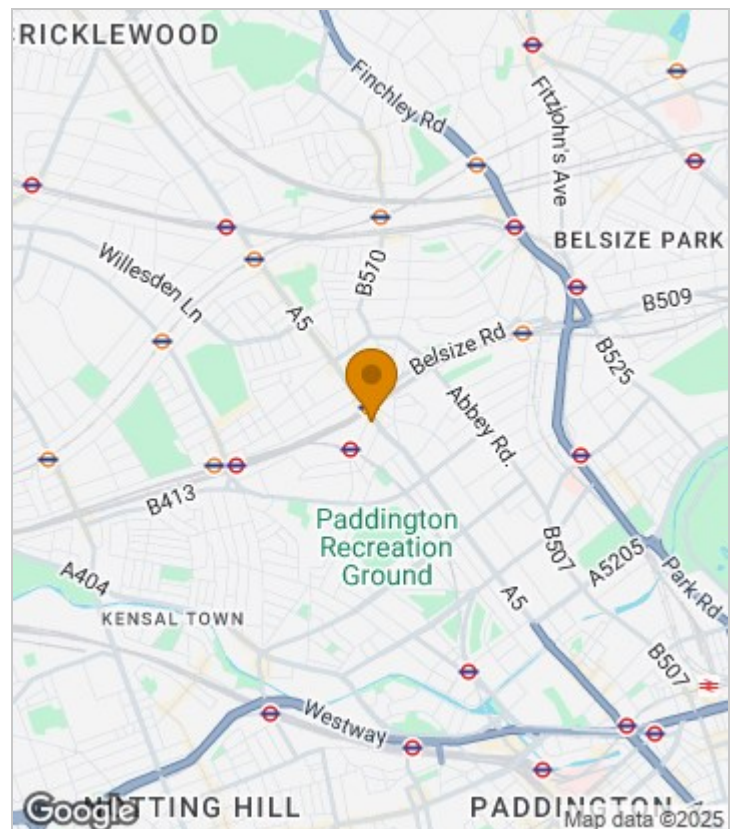
Upon entering, you will find an open plan reception room and kitchen, creating a welcoming space for both relaxation and entertaining. The flat features two generously sized double bedrooms, providing ample room for rest and personal space. A well-appointed bathroom completes the accommodation, ensuring all your needs are met.

The location is truly exceptional, with the vibrant Kilburn High Road just a stone's throw away. Here, you can enjoy a diverse selection of local restaurants and cafés, perfect for indulging in culinary delights. The tree-lined streets of Kilburn Park add to the charm of the area, offering a pleasant environment for leisurely strolls. Additionally, the property is surrounded by a wealth of cultural, retail, leisure, and educational amenities, making it an ideal spot for modern living.

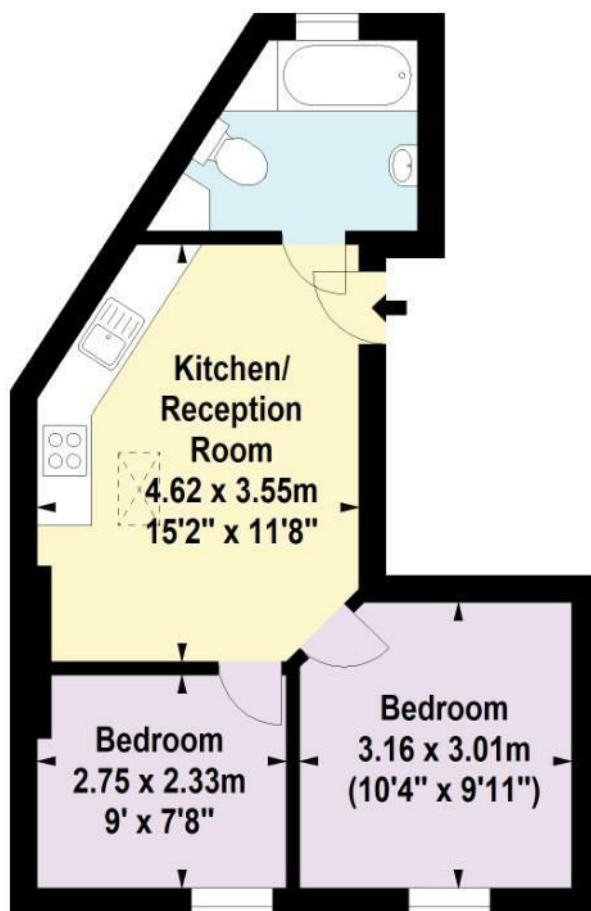
Transport links are also superb, with easy access to the Bakerloo and Overground networks, ensuring that commuting around London is both straightforward and efficient. Furthermore, the service charge conveniently includes electricity, adding to the appeal of this well-rounded property.

In summary, this two-bedroom flat on Cambridge Avenue presents a wonderful opportunity to embrace city living in a vibrant and well-connected neighbourhood. Don't miss your chance to make this charming apartment your new home.

Area Map



Floor Plan



First Floor

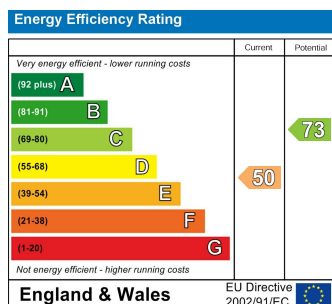
For Identification Purposes Only. Not To Scale. © www.totalvista.uk 2025

Cambridge Avenue, NW6

Approx. Gross Internal Area
36.60 Sq M - 394 Sq Ft

TOTALVISTA

Energy Efficiency Graph



Viewing

Please contact our Sales QP Office on 0207 604 4040 if you wish to arrange a viewing appointment for this property or require further information.

- Two double bedrooms
- Open-plan reception/kitchen
- First-floor period flat
- Good condition throughout
- Walking distance to Kilburn Park station
- Close to Maida Vale station
- A short walk to Queens Park
- Electricity included in the service charge
- Ideal for first-time buyers
- Viewing recommended

For further information contact:

Sales QP, 2a Brondesbury Road, London, NW6 6AS

Tel: 0207 604 4040 Email: info@jorgensenturner.com <https://www.jorgensenturner.com/>

Disclaimer

These particulars, whilst believed to be accurate are set out as a general outline only for guidance and do not constitute any part of an offer or contract. Intending purchasers should not rely on them as statements of representation of fact, but must satisfy themselves by inspection or otherwise as to their accuracy. No person in this firm's employment has the authority to make or give any representation or warranty in respect of the property.