



Priory Park Road, Queens
Park, NW6

Asking Price £575,000



Priory Park Road, Queens Park, NW6

Asking Price £575,000



Summary Description

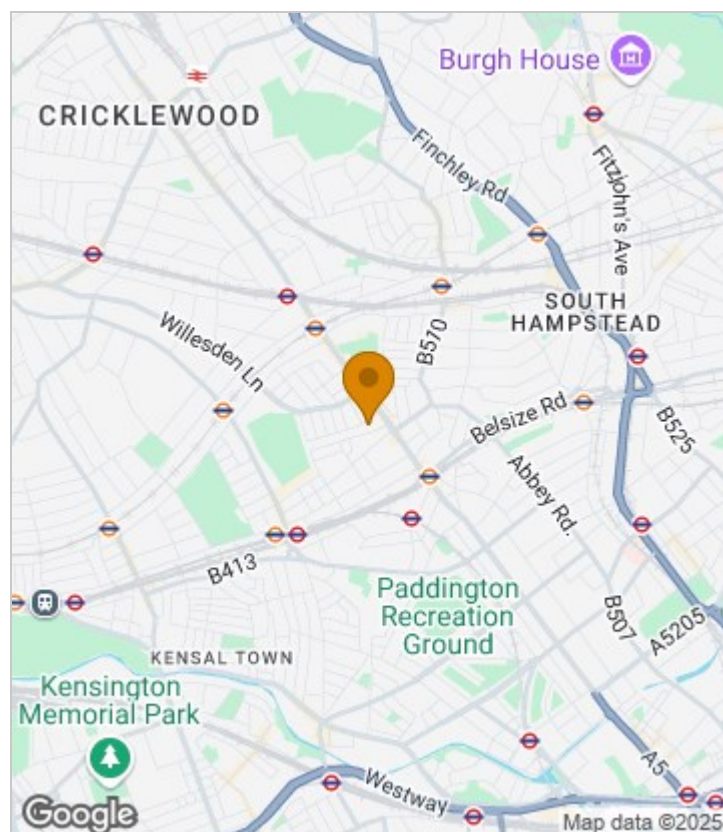
Nestled in Queens Park, this charming two-bedroom apartment is a true gem waiting to be discovered. As you step inside, you'll be greeted by a bright and airy open plan living room and kitchen, perfect for entertaining guests or simply relaxing after a long day.

The property boasts two generously sized double bedrooms, offering ample space for a growing family or those in need of a home office. The modern family bathroom provides a touch of luxury, while the large balcony is ideal for enjoying a morning coffee or soaking up the evening sun.

Convenience is key with this property, as it is just a stone's throw away from Kilburn (Jubilee Line) and Brondesbury (London Overground) stations, making commuting into Central London a breeze. Additionally, within a leisurely ten-minute stroll, you'll find yourself amidst the trendy community hubs of Lonsdale Road and Salusbury Road, offering an array of cafes, restaurants, and shops to explore.

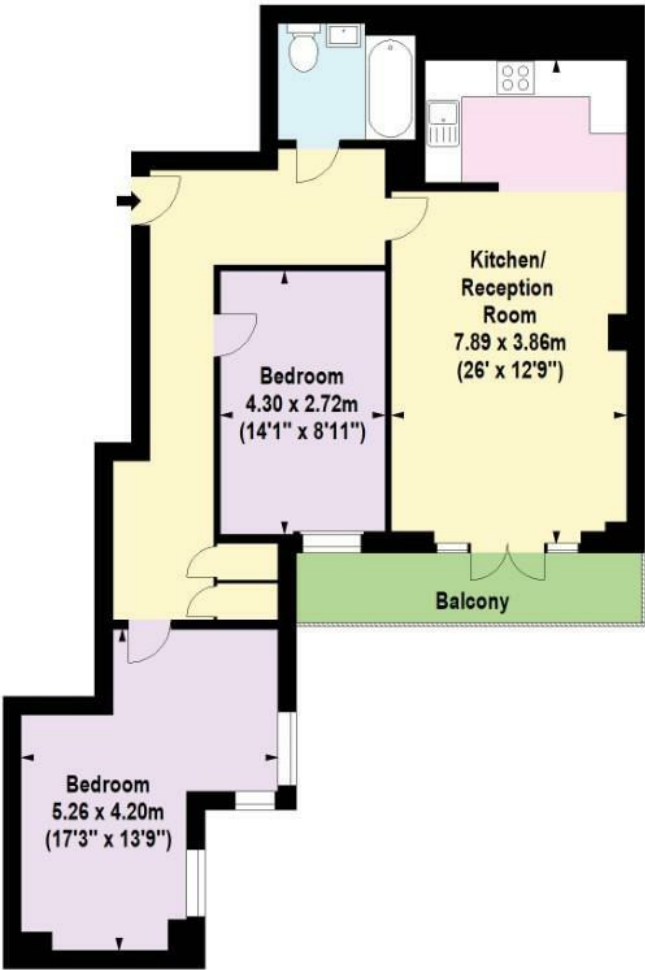
Don't miss out on the opportunity to make this modern and spacious apartment your new home. Book a viewing today and envision the endless possibilities that await you.

Area Map





Floor Plan



First Floor



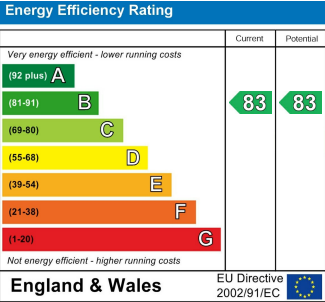
For Identification Purposes Only. Not To Scale. © www.totalvista.uk 2024

Kyle House,
Priory Park Road, NW6

Approx. Gross Internal Area
78.78 Sq M - 848 Sq Ft



Energy Efficiency Graph



Viewing

Please contact our Sales QP Office on 0207 604 4040 if you wish to arrange a viewing appointment for this property or require further information.

- Large open plan/ living room kitchen.
- Secure purpose built development.
- Minutes from Kilburn (Jubilee Line) and Brondesbury (London Overground) stations.
- Close to the open spaces of Queens Park.
- Two spacious double bedrooms.
- Large private balcony.
- Within a ten-minute walk from the amenities of Lonsdale Road and Salusbury Road.
- Lift access.

For further information contact:
Sales QP, 2a Brondesbury Road, London, NW6 6AS
Tel: 0207 604 4040 Email: info@jorgensenturner.com <https://www.jorgensenturner.com/>



Disclaimer
These particulars, whilst believed to be accurate are set out as a general outline only for guidance and do not constitute any part of an offer or contract. Intending purchasers should not rely on them as statements of representation of fact, but must satisfy themselves by inspection or otherwise as to their accuracy. No person in this firms employment has the authority to make or give any representation or warranty in respect of the property.