



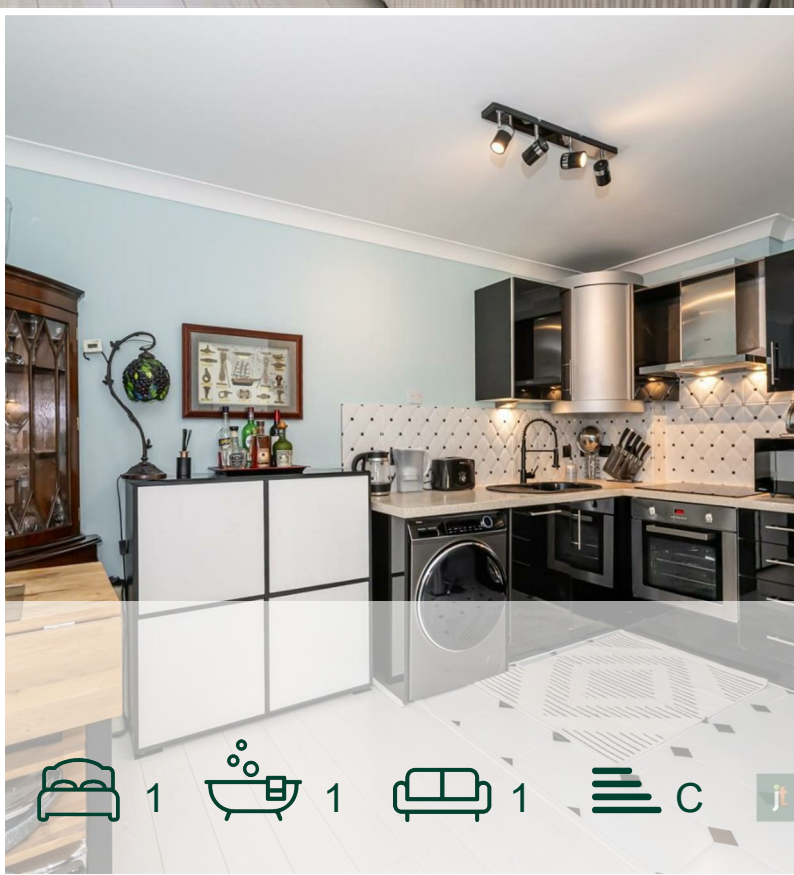
jt | JORGENSENTURNER



**Regents Plaza
Apartments, London, NW6**

£425,000

jt



1



1



1

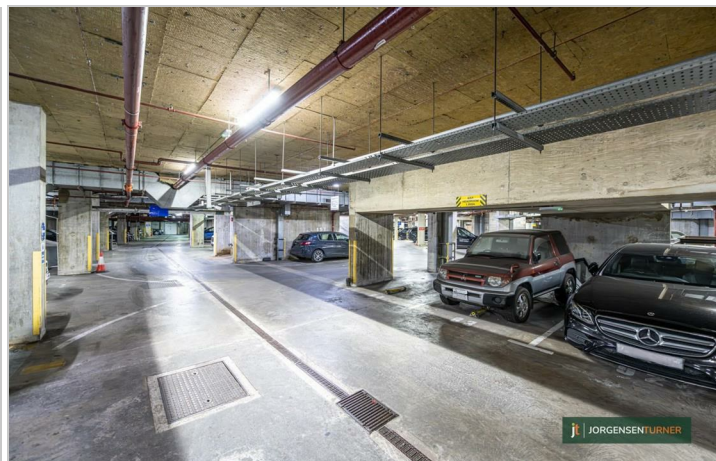


C

jt

Regents Plaza Apartments, London, NW6

£425,000



Summary Description

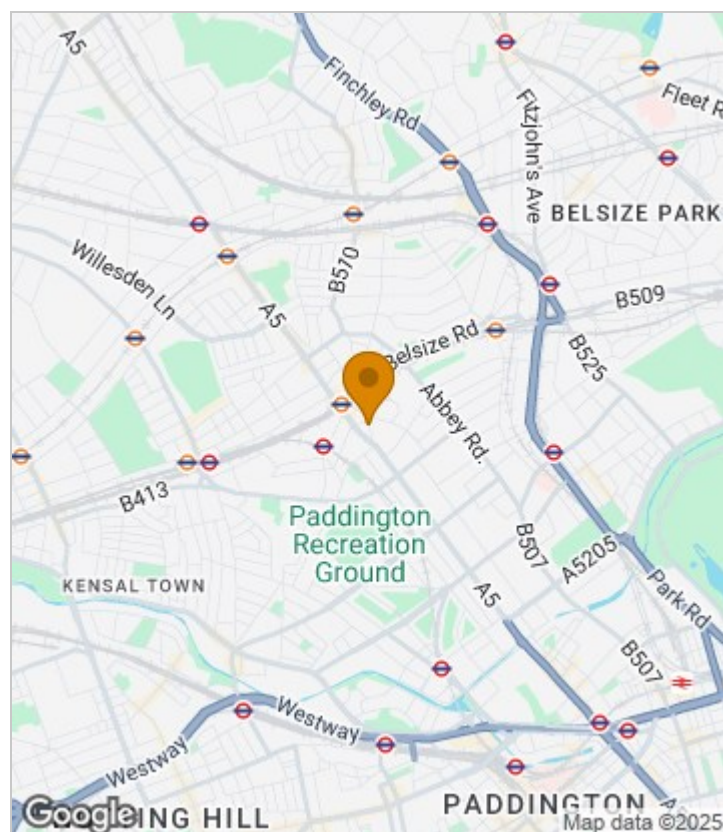
Welcome to Regents Plaza Apartments, a stunning one-bedroom flat located in a vibrant area. This exceptional property boasts a spacious open-plan kitchen and living room, perfect for both relaxation and entertaining. The generous bedroom offers a tranquil retreat, complemented by a modern bathroom that enhances the overall appeal of the apartment.

One of the standout features of this residence is the allocated underground car parking space, providing convenience in the heart of the city. The communal areas are equally impressive, showcasing a stylish design that reflects the quality of living within the block. Residents benefit from the added security and assistance of a 24-hour porter, ensuring peace of mind at all times as well as lift access.

Situated a short stroll away from Kilburn Park and Maida Vale underground stations, this apartment offers excellent transport links, making it easy to explore all that London has to offer. Additionally, the property is within walking distance of the diverse amenities of Maida Vale and St John's Wood, where you can find an array of shops, cafes, and parks.

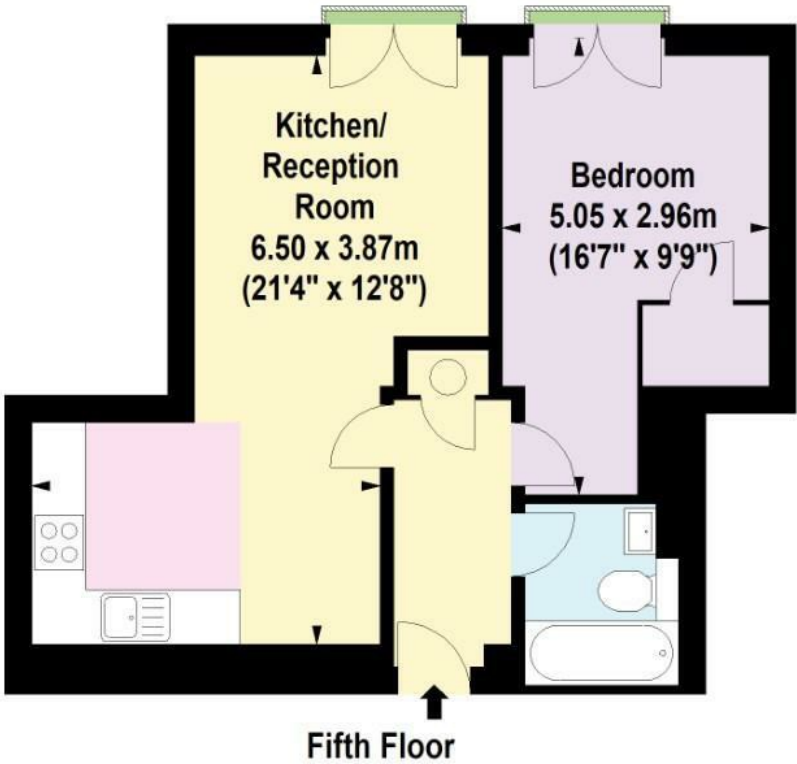
This flat is an ideal choice for those seeking a modern and comfortable living space in a prime location. Whether you are a first-time buyer or looking for a rental opportunity, this property presents a wonderful chance to enjoy the best of London living. Don't miss out on the opportunity to make this stunning apartment your new home.

Area Map





Floor Plan



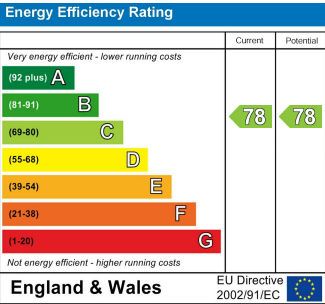
For Identification Purposes Only. Not To Scale. © www.totalvista.uk 2025

Regents Plaza Apartments,
Kilburn Priory, NW6

Approx. Gross Internal Area
44.41 Sq M - 478 Sq Ft



Energy Efficiency Graph



Viewing

Please contact our Sales QP Office on 0207 604 4040 if you wish to arrange a viewing appointment for this property or require further information.

- Spacious open-plan kitchen and living room
- Modern kitchen and bathroom
- Communal gardens
- Walking distance to Maida Vale and St John's Wood
- Allocated underground car parking space
- 24-hour porter
- Close to Kilburn Park and Maida Vale underground stations
- Lift access

For further information contact:
Sales QP, 2a Brondesbury Road, London, NW6 6AS
Tel: 0207 604 4040 Email: info@jorgensenturner.com <https://www.jorgensenturner.com/>

Disclaimer

These particulars, whilst believed to be accurate are set out as a general outline only for guidance and do not constitute any part of an offer or contract. Intending purchasers should not rely on them as statements of representation of fact, but must satisfy themselves by inspection or otherwise as to their accuracy. No person in this firms employment has the authority to make or give any representation or warranty in respect of the property.

