



jt | JORGENSENTURNER



Lisson Grove, London

£2,995 Per Month

jt



3



1



1



E

jt



# Lisson Grove, London

£2,995 Per Month



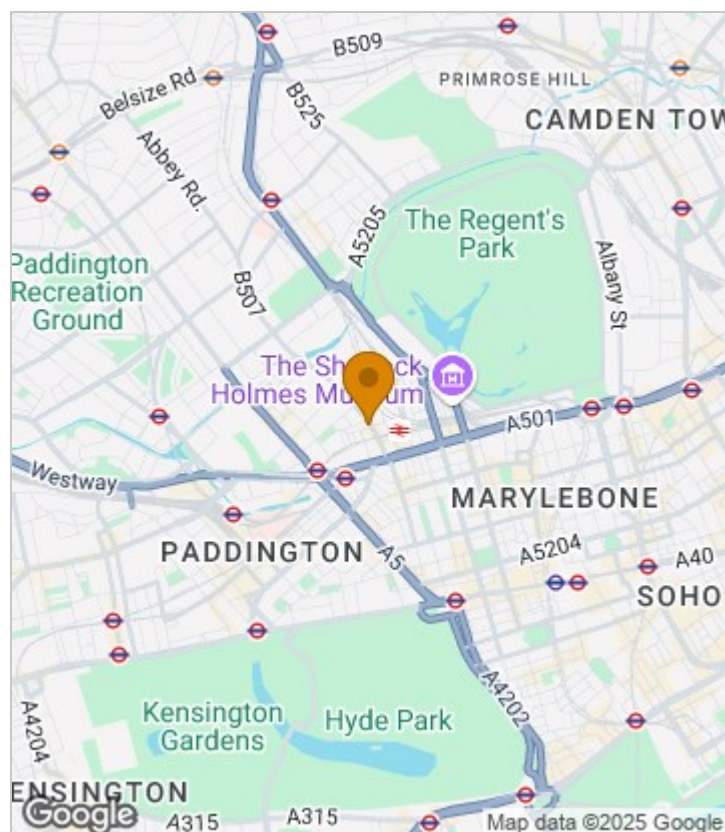
## Summary Description

This lovely three bedroom flat is available immediately. Located on the first floor is offering three spacious, bright bedrooms that comes with ton of storage. Other features are shared fully fitted bathroom, open plan lounge. Other features are large windows that allows tons of natural light, an amazing location providing excellent transport skills, many shops bars and restaurants located within short working distance. Famous Marylebone station is only 4minutes away and Edgware station is only 8 minutes away, Paddington station is 15minutes away by walking. This good sized 771 sq/ feet property is suitable for sharers or family.

One weeks holding deposit will be required, 5 weeks damage deposit will be required, EPC rating E, council tax band D.

Call Jorgensen Turner estate agents to arrange a viewing.

## Area Map

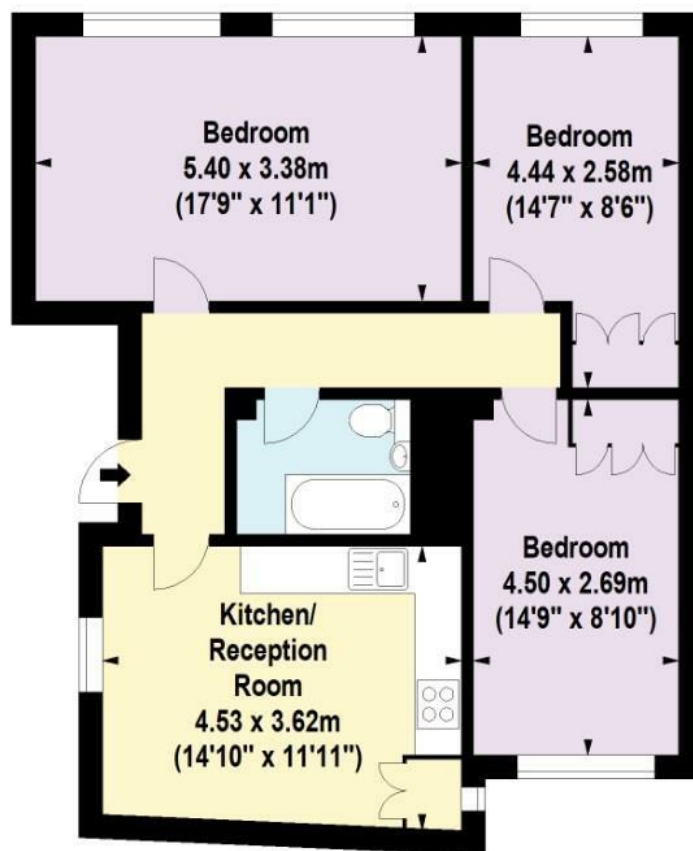








## Floor Plan



First Floor

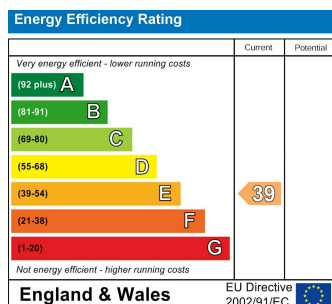
For Identification Purposes Only. Not To Scale. 2025



Lisson Grove, NW1

Approx. Gross Internal Area  
74.04 Sq M - 797 Sq Ft

## Energy Efficiency Graph



## Viewing

Please contact our Lettings QP Office on 0207 604 4040 if you wish to arrange a viewing appointment for this property or require further information.

- Three bedroom
- Open plan
- Amazing location
- First floor
- Modern bathroom
- Great access to central

For further information contact:

Lettings QP, 2a Brondesbury Road, London, NW6 6AS

Tel: 0207 604 4040 Email: [info@jorgensenturner.com](mailto:info@jorgensenturner.com) <https://www.jorgensenturner.com/>

## Disclaimer

These particulars, whilst believed to be accurate are set out as a general outline only for guidance and do not constitute any part of an offer or contract. Intending purchasers should not rely on them as statements of representation of fact, but must satisfy themselves by inspection or otherwise as to their accuracy. No person in this firm's employment has the authority to make or give any representation or warranty in respect of the property.