



Dibdin House, Maida Vale, W9

£450,000



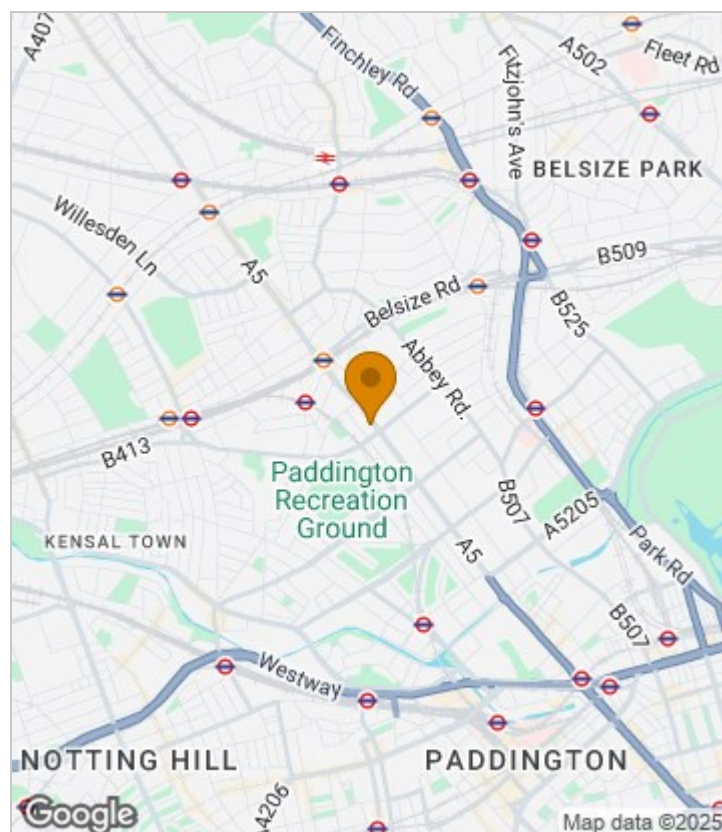
Summary Description

Welcome to this charming two bedroom property located in the sought after area of Maida Vale, W9. This delightful property boasts a bright and spacious interior, perfect for those seeking modern living in a convenient location.

As you step into this lovely home, you are greeted by a dual-aspect reception room that overlooks a central communal courtyard, providing a tranquil and picturesque view. The two double bedrooms offer ample space for relaxation and rest, making it ideal for a small family or professionals looking for a comfortable living space.

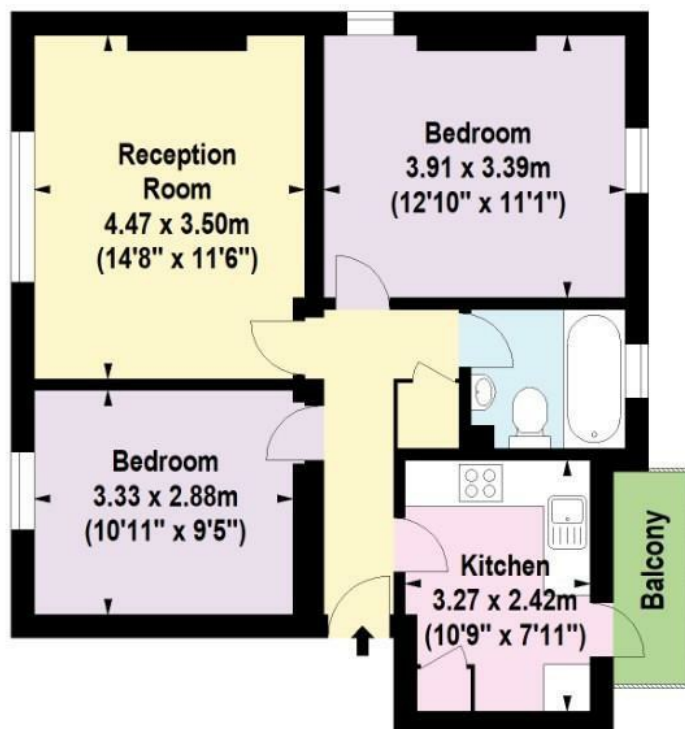
Situated in a well-regarded development, this property offers the perfect blend of contemporary living and traditional charm. With a long lease and being chain-free, this property is ready to become your new home without any hassle.

Area Map





Floor Plan



Second Floor

For Identification Purposes Only. Not To Scale. © www.totalvista.uk 2024

Dibdin House,
Kilburn High Road, W9

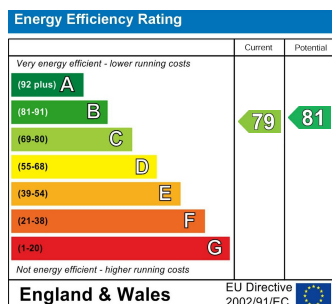
Approx. Gross Internal Area
59.18 Sq M - 637 Sq Ft



TOTAL VISTA



Energy Efficiency Graph



Viewing

Please contact our Sales QP Office on 0207 604 4040 if you wish to arrange a viewing appointment for this property or require further information.

- GENEROUS TWO DOUBLE BEDROOM FLAT
- SET IN A WELL REGARDED BUILDING
- WALKING DISTANCE TO PADDINGTON REC
- CLOSE TO BAKERLOO LINE
- OFFERED TO THE MARKET CHAIN FREE
- BALCONY OVERLOOKING COMMUNAL COURTYARD

For further information contact:

Sales QP, 2a Brondesbury Road, London, NW6 6AS

Tel: 0207 604 4040 Email: info@jorgensenturner.com <https://www.jorgensenturner.com/>

Disclaimer

These particulars, whilst believed to be accurate are set out as a general outline only for guidance and do not constitute any part of an offer or contract. Intending purchasers should not rely on them as statements of representation of fact, but must satisfy themselves by inspection or otherwise as to their accuracy. No person in this firm's employment has the authority to make or give any representation or warranty in respect of the property.