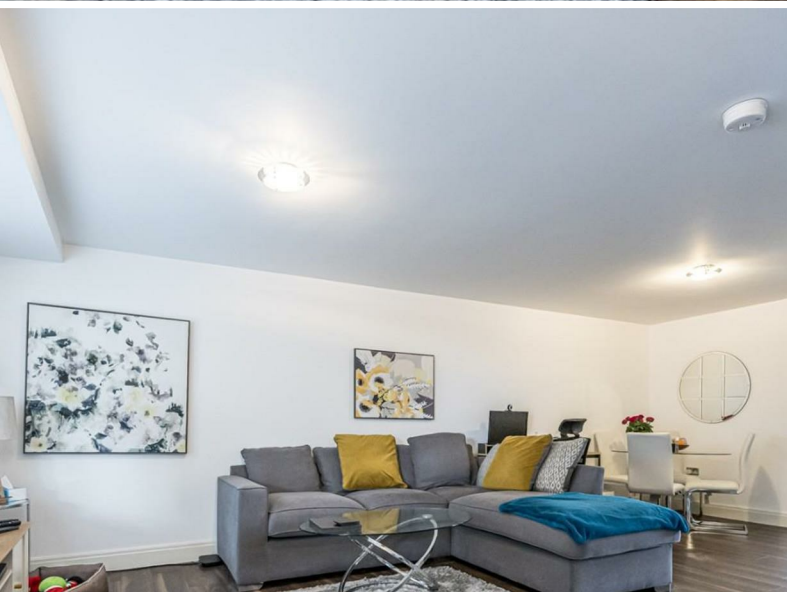




jt | JORGENSENTURNER



Brondesbury Road, NW6

£2,150 Per Month



jt 2 1 1

jt

Brondesbury Road, NW6

£2,150 Per Month

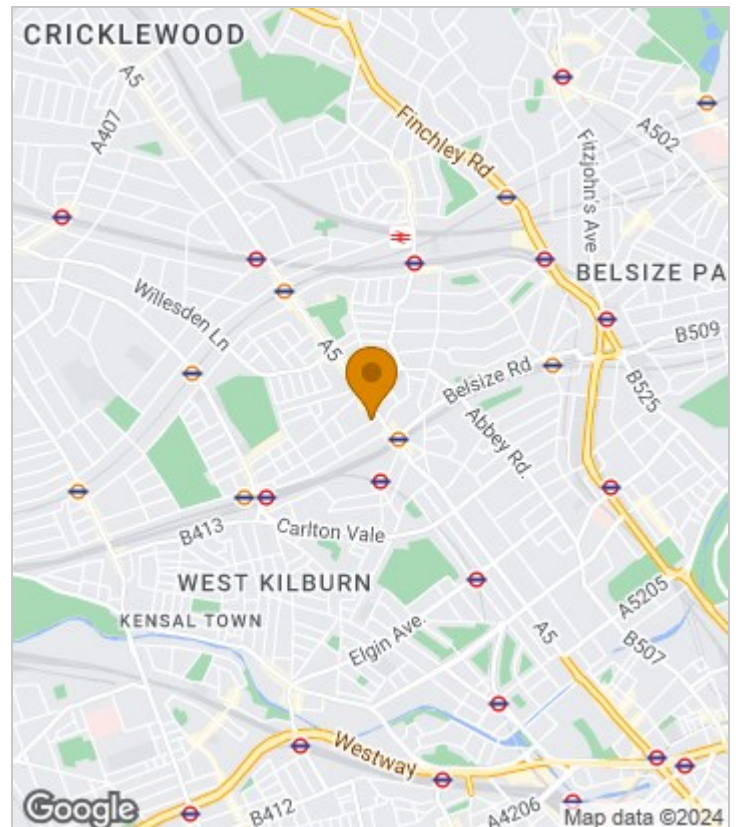


Summary Description

A beautifully presented two double bedroom apartment available from 6th of September. Property is modern and very bright and is high spec. Offers fully fitted kitchen and bathroom. Has double glazed windows throughout and nice wooden floor. Property comes unfurnished, there is a lift as well as care taker who is looking after whole block. There is no car park option with this property. Well connected with central London by Overground and Underground stations as well as many buses. To arrange a viewing please call Jorgensen Turner Estate agents.

One week's holding deposit will be required, 5 week's damage deposit will be required, EPC rating B, Council tax band C.

Area Map





Floor Plan



Second Floor

For Identification Purposes Only. Not To Scale. © www.totalvista.uk 2020

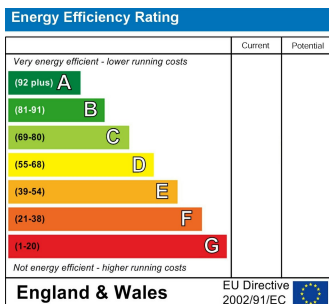


Brondesbury Road, NW6

Approx. Gross Internal Area
64.72 Sq M - 589 Sq Ft



Energy Efficiency Graph



Viewing

Please contact our Lettings QP Office on 0207 604 4040 if you wish to arrange a viewing appointment for this property or require further information.

For further information contact:

Lettings QP, 2a Brondesbury Road, London, NW6 6AS

Tel: 0207 604 4040 Email: info@jorgensenturner.com <https://www.jorgensenturner.com/>



Disclaimer

These particulars, whilst believed to be accurate are set out as a general outline only for guidance and do not constitute any part of an offer or contract. Intending purchasers should not rely on them as statements of representation of fact, but must satisfy themselves by inspection or otherwise as to their accuracy. No person in this firm's employment has the authority to make or give any representation or warranty in respect of the property.