



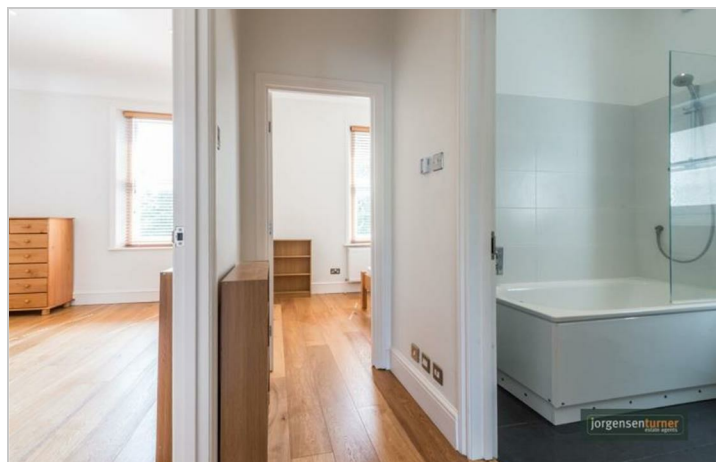
Brondesbury Road,  
London

£2,150 Per Month



# Brondesbury Road, London

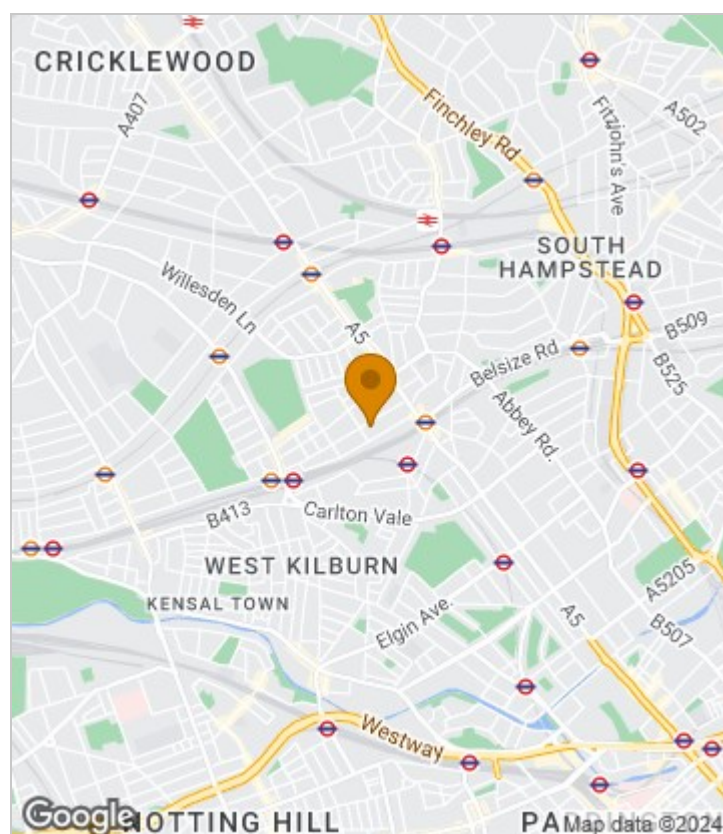
£2,150 Per Month



## Summary Description

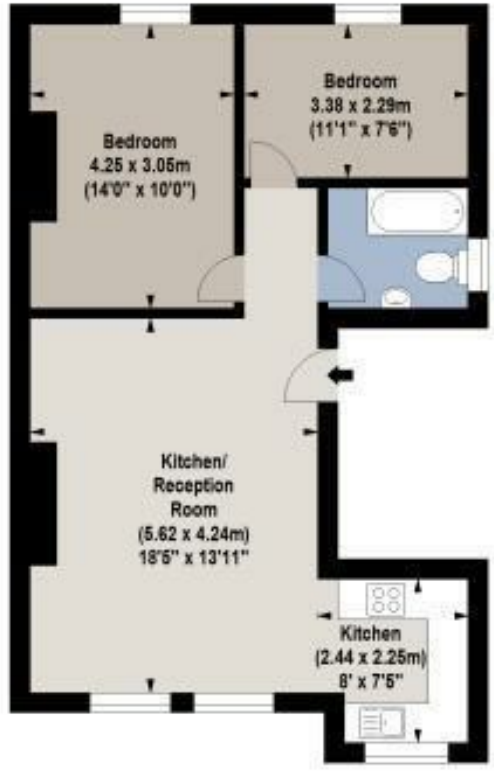
Two Double Bedroom first floor period conversion in Queens Park. Boasting two double bedrooms, large reception, fitted kitchen with integrated appliances and fitted bathroom. Offered in good condition throughout. Property has wooden flooring throughout, high ceilings, modern bathroom and kitchen. Property is available from 8th of August. Located moments away from Queens Park Station and the popular bars, restaurants, coffee shops and boutiques of Salusbury Road as well Salusbury Primary School this property is ideal for a couple, sharers or small family. One week's holding deposit will be required, 5 weeks damage deposit will be required, EPC rating C, Council tax band D

## Area Map





# Floor Plan



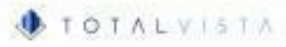
First Floor

For Identification Purposes Only. Not To Scale. © www.totalvista.uk 2017

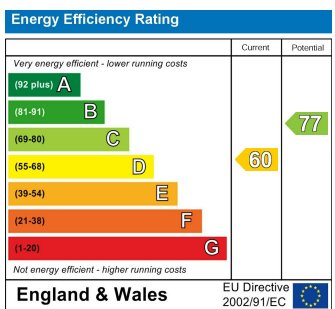


Brondesbury Road, NW6

Approx. Gross Internal Area  
67.78 Sq M - 622 Sq Ft



## Energy Efficiency Graph



## Viewing

Please contact our Lettings QP Office on 0207 604 4040 if you wish to arrange a viewing appointment for this property or require further information.

- Two bedroom
- High ceiling
- Brondesbury road
- Open plan lounge
- Modern
- Bright flat

For further information contact:

Lettings QP, 2a Brondesbury Road, London, NW6 6AS

Tel: 0207 604 4040 Email: info@jorgensenturner.com <https://www.jorgensenturner.com/>



## Disclaimer

These particulars, whilst believed to be accurate are set out as a general outline only for guidance and do not constitute any part of an offer or contract. Intending purchasers should not rely on them as statements of representation of fact, but must satisfy themselves by inspection or otherwise as to their accuracy. No person in this firms employment has the authority to make or give any representation or warranty in respect of the property.