





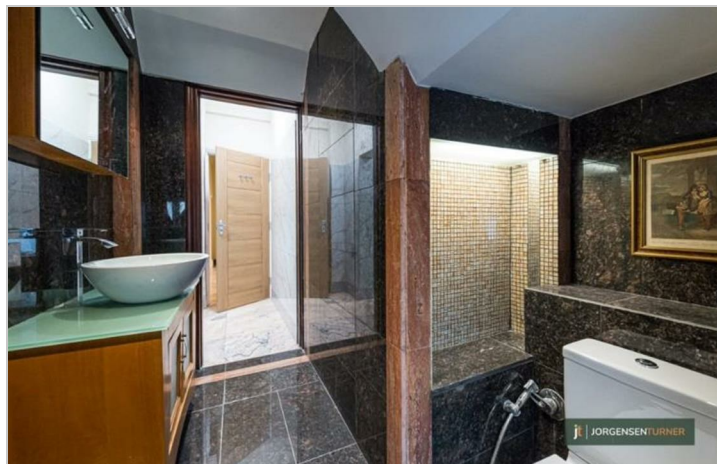
Willesden Lane, London

£2,250 Per Month

 2  1  1  D

Willesden Lane, London

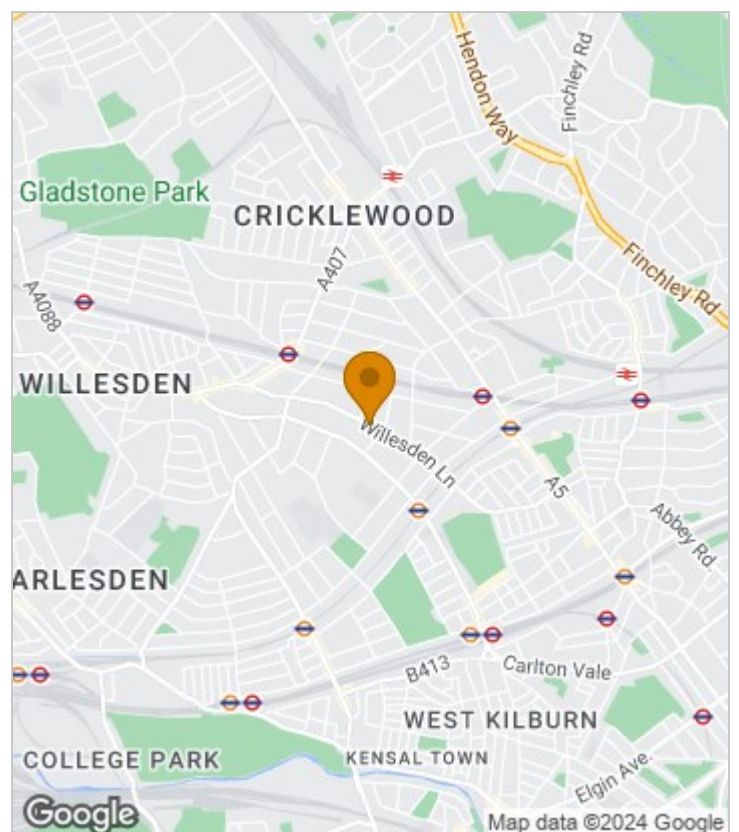
£2,250 Per Month



Summary Description

Stunning and huge two bedroom flat is available now. Property is massive and offers stunning living room overlooking large private garden. Other features are large and separate kitchen, two double bedrooms one of which has sliding doors leading to the garden. Comes with modern bathroom, lounge and bedrooms has marble floor. There will be extra £250 payable to the landlord for all the bills on top of the rent (all utilities including council tax and internet). Suitable for up to 2 people or a family. No 3+ sharers will be considered. Off street parking available for extra £50p/m. One week's holding deposit required, 5 weeks damage deposit required. Please call Jorgensen Turner Estate agents to arrange a viewing.

Area Map

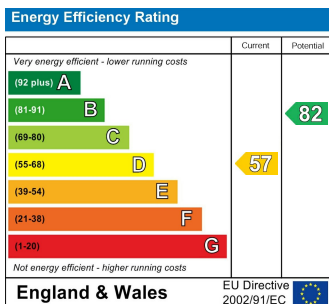




Floor Plan



Energy Efficiency Graph



Viewing

Please contact our Lettings QP Office on 0207 604 4040 if you wish to arrange a viewing appointment for this property or require further information.

For further information contact:

Lettings QP, 2a Brondesbury Road, London, NW6 6AS

Tel: 0207 604 4040 Email: info@jorgensenturner.com <https://www.jorgensenturner.com/>

Disclaimer

These particulars, whilst believed to be accurate are set out as a general outline only for guidance and do not constitute any part of an offer or contract. Intending purchasers should not rely on them as statements of representation of fact, but must satisfy themselves by inspection or otherwise as to their accuracy. No person in this firm's employment has the authority to make or give any representation or warranty in respect of the property.

