



Charteris Road, Queens
Park

£2,750 Per Month



2



2



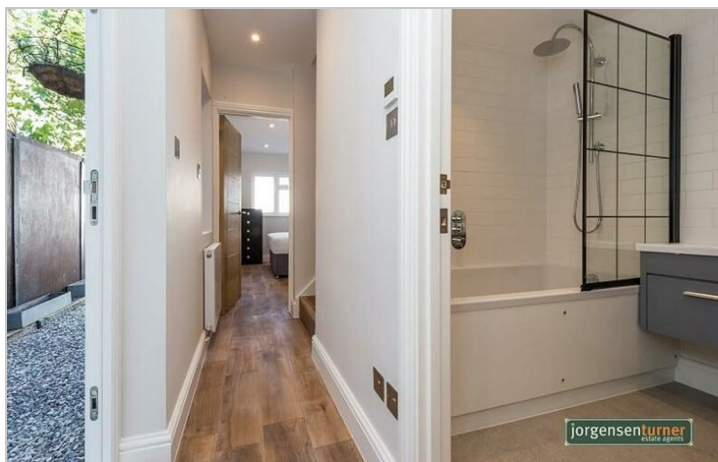
1



D

Charteris Road, Queens Park

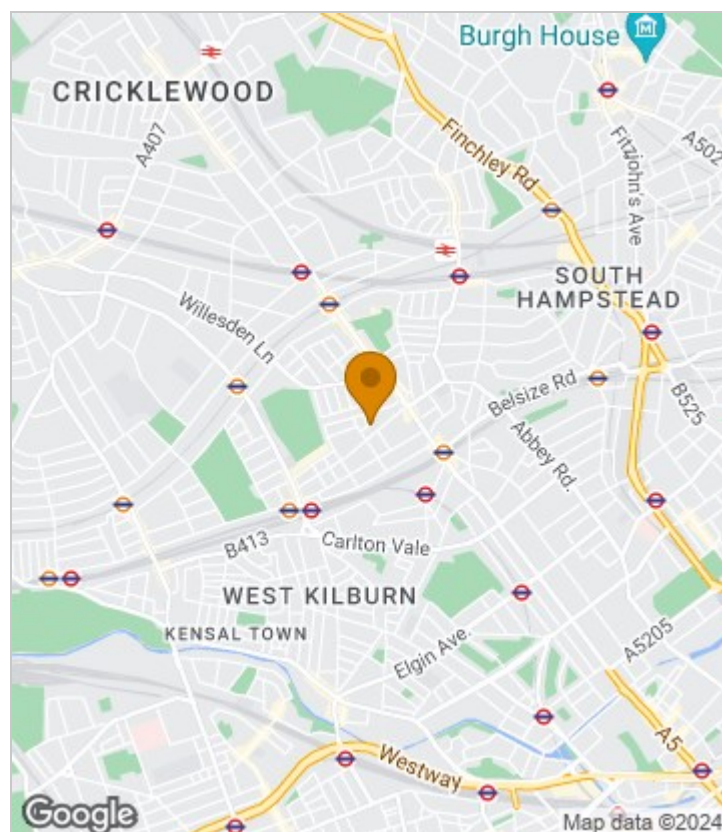
£2,750 Per Month



Summary Description

Simple stunning two double bedroom garden flat is available from 3rd of August. Split over two floors and offers nothing else but comfort and great style of living. Renovated through out, benefits from amazing storage including caller, two bathrooms and sunny garden great for summer BBQ. Has wooden floor throughout, new wiring, new double glazed windows. Property is located close to Queens Park areas with many shops and restaurants also has great transport link to central London. Call Jorgensen Turner estate agent to arrange a viewing. To proceed with the property 1 week's holding deposit will be required, damage deposit is 5 weeks. Council tax band D

Area Map

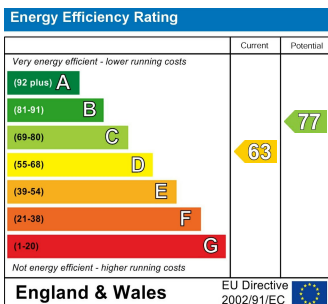




Floor Plan



Energy Efficiency Graph



Viewing

Please contact our Lettings QP Office on 0207 604 4040 if you wish to arrange a viewing appointment for this property or require further information.

For further information contact:

Lettings QP, 2a Brondesbury Road, London, NW6 6AS

Tel: 0207 604 4040 Email: info@jorgensenturner.com <https://www.jorgensenturner.com/>

Disclaimer

These particulars, whilst believed to be accurate are set out as a general outline only for guidance and do not constitute any part of an offer or contract. Intending purchasers should not rely on them as statements of representation of fact, but must satisfy themselves by inspection or otherwise as to their accuracy. No person in this firm's employment has the authority to make or give any representation or warranty in respect of the property.

