



jt | JORGENSENTURNER



Priory Park Road, London,
NW6

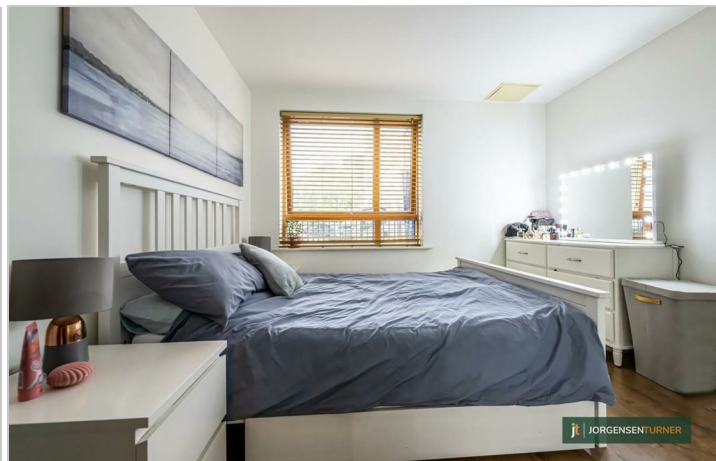
Offers In Excess Of £387,950



jt

Priory Park Road, London, NW6

Offers In Excess Of £387,950



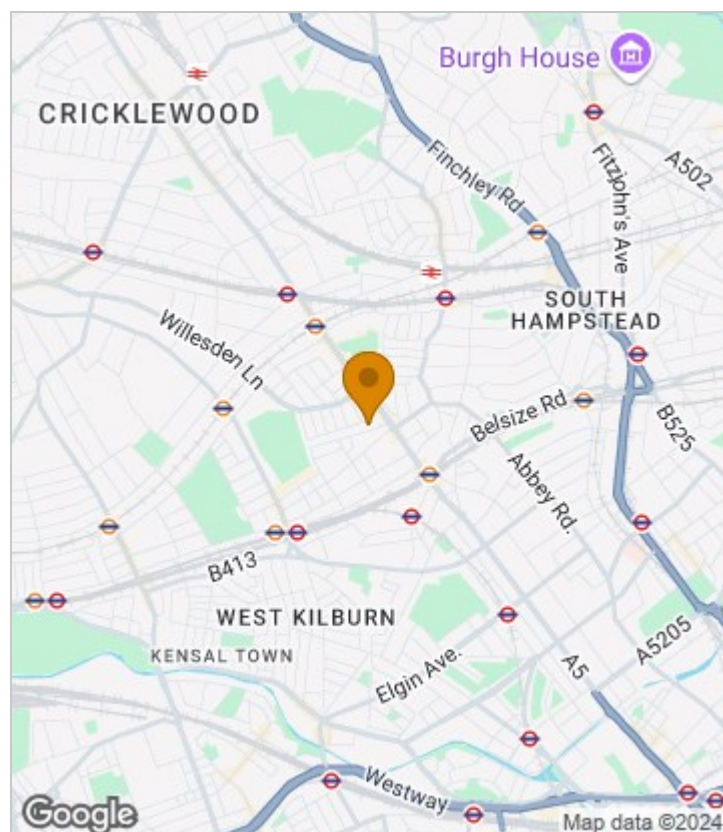
Summary Description

Welcome to this charming contemporary purpose-built apartment located in an ultra-convenient residential road. This delightful flat boasts a generous 581 sq ft of living space, perfect for a first-time buyer looking for their ideal home.

Upon entering, you are greeted by a reception room that offers a comfortable space to relax and entertain with its smart, modern semi open-plan kitchen. The recently updated bathroom adds a touch of luxury to this lovely property. Additionally the property benefits from excellent well-planned storage.

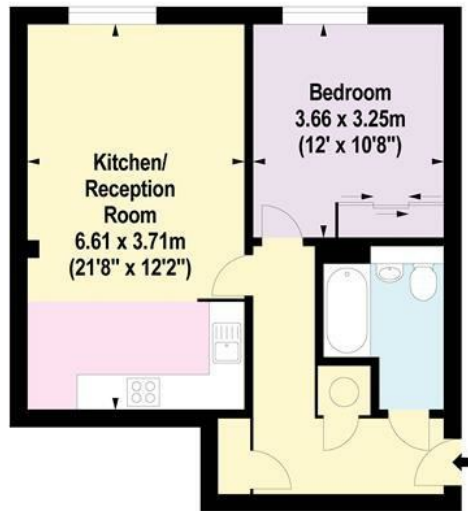
Built in 2010, this flat offers all the conveniences of a newer property, ensuring a hassle-free living experience. The ultra-convenient location further enhances the appeal of this apartment, making it an excellent choice for those seeking a vibrant lifestyle in the heart of London and very easy access to the London villages of both Queens Park and West Hampstead.

Area Map





Floor Plan



Ground Floor

For Identification Purposes Only. Not To Scale. © www.totalvista.uk 2024

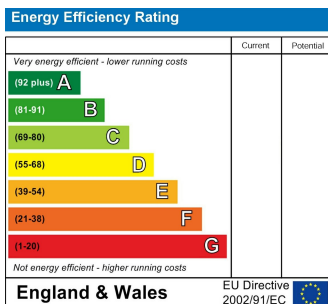


Kyle House, NW6

Approx. Gross Internal Area
52.40 Sq M - 564 Sq Ft



Energy Efficiency Graph



Viewing

Please contact our Sales QP Office on 0207 604 4040 if you wish to arrange a viewing appointment for this property or require further information.

For further information contact:

Sales QP, 2a Brondesbury Road, London, NW6 6AS

Tel: 0207 604 4040 Email: info@jorgensenturner.com <https://www.jorgensenturner.com/>

Disclaimer

These particulars, whilst believed to be accurate are set out as a general outline only for guidance and do not constitute any part of an offer or contract. Intending purchasers should not rely on them as statements of representation of fact, but must satisfy themselves by inspection or otherwise as to their accuracy. No person in this firm's employment has the authority to make or give any representation or warranty in respect of the property.

