



jt | JORGENSENTURNER



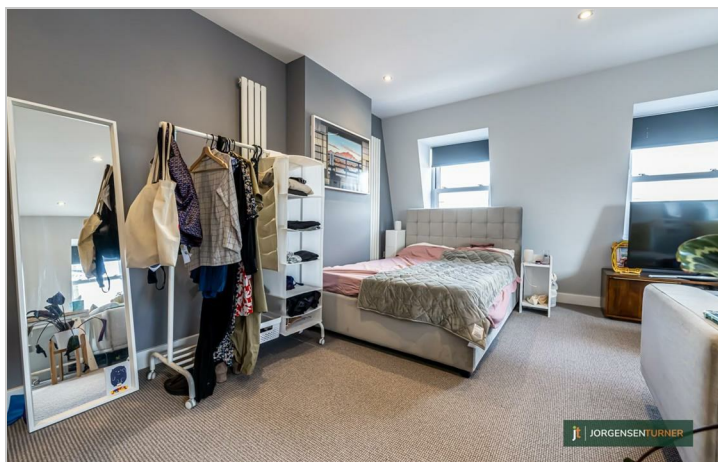
Kilburn High Road, London

£1,450 Per Month



Kilburn High Road, London

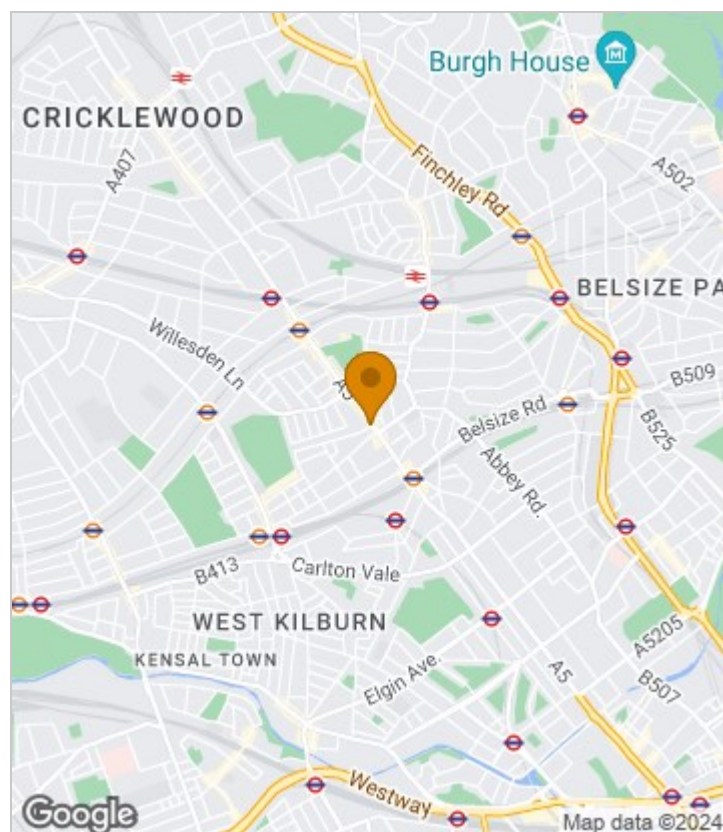
£1,450 Per Month



Summary Description

Modern and spacious top floor period conversion studio flat. Boasting a large reception and sleeping area, fully fitted modern kitchen including dishwasher, fully fitted modern bathroom finished to a high standard. The property also has access to a communal roof terrace and is fantastically located within walking distance to both the Bakerloo and Jubilee lines, as well as bus routes to Central London. Very close to shops, restaurants and bars. Offered on an unfurnished basis (non negotiable) and is available from 25th of July. Please call Jorgensen Turner Estate Agents to book a viewing. One week`s holding deposit will be required, 5 weeks damage deposit required, EPC rating D, Council tax band A.

Area Map





Floor Plan



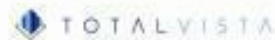
Third Floor

For Identification Purposes Only. Not To Scale. © www.totalvista.uk 2018

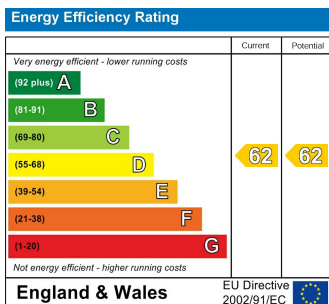


Kilburn High Road, NW6

Approx. Gross Internal Area
34.00 Sq M - 366 Sq Ft



Energy Efficiency Graph



Viewing

Please contact our Lettings QP Office on 0207 604 4040 if you wish to arrange a viewing appointment for this property or require further information.

- Stunning studio flat
- Very good condition
- Unfurnished
- High Ceiling
- Double glazed windows
- Close to transport link

For further information contact:

Lettings QP, 2a Brondesbury Road, London, NW6 6AS

Tel: 0207 604 4040 Email: info@jorgensenturner.com <https://www.jorgensenturner.com/>

Disclaimer

These particulars, whilst believed to be accurate are set out as a general outline only for guidance and do not constitute any part of an offer or contract. Intending purchasers should not rely on them as statements of representation of fact, but must satisfy themselves by inspection or otherwise as to their accuracy. No person in this firm's employment has the authority to make or give any representation or warranty in respect of the property.

