



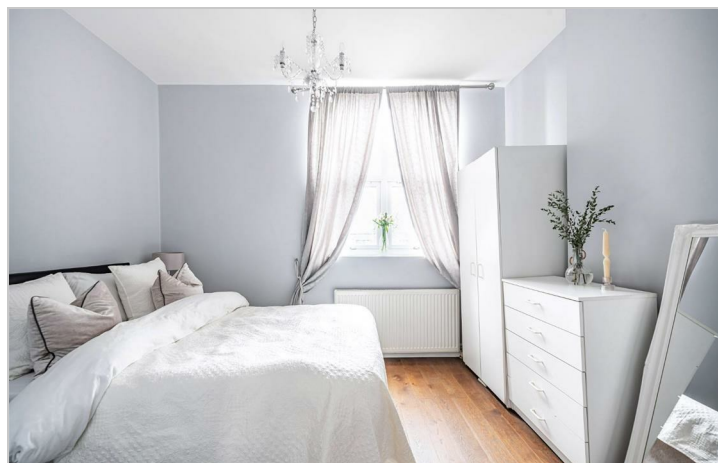
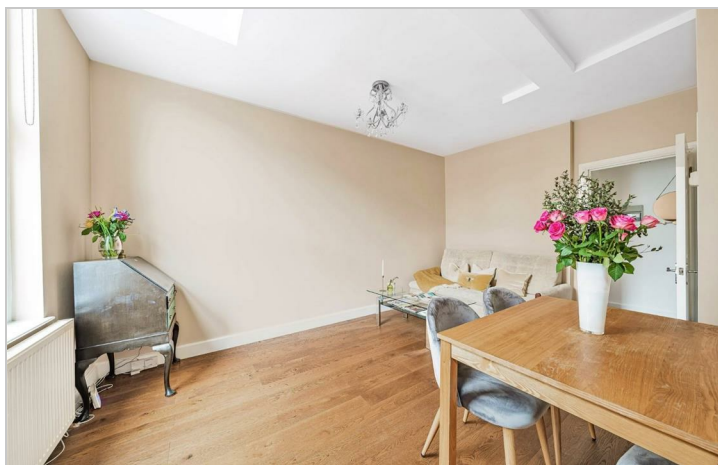
Gorgeous Victorian
Conversion, NW6 7LB

£375,000



Gorgeous Victorian Conversion, NW6 7LB

£375,000



Summary Description

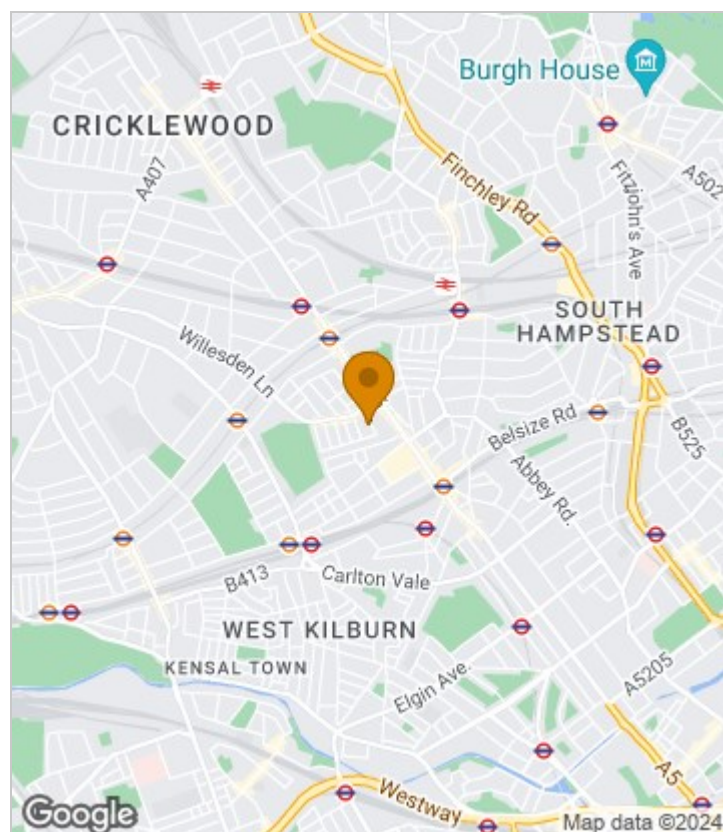
Welcome to this stunning Victorian conversion property located in the desirable NW6 7LB area. This charming flat boasts a spacious 15' sitting room, perfect for relaxing or entertaining guests. The double bedroom offers a cozy retreat after a long day.

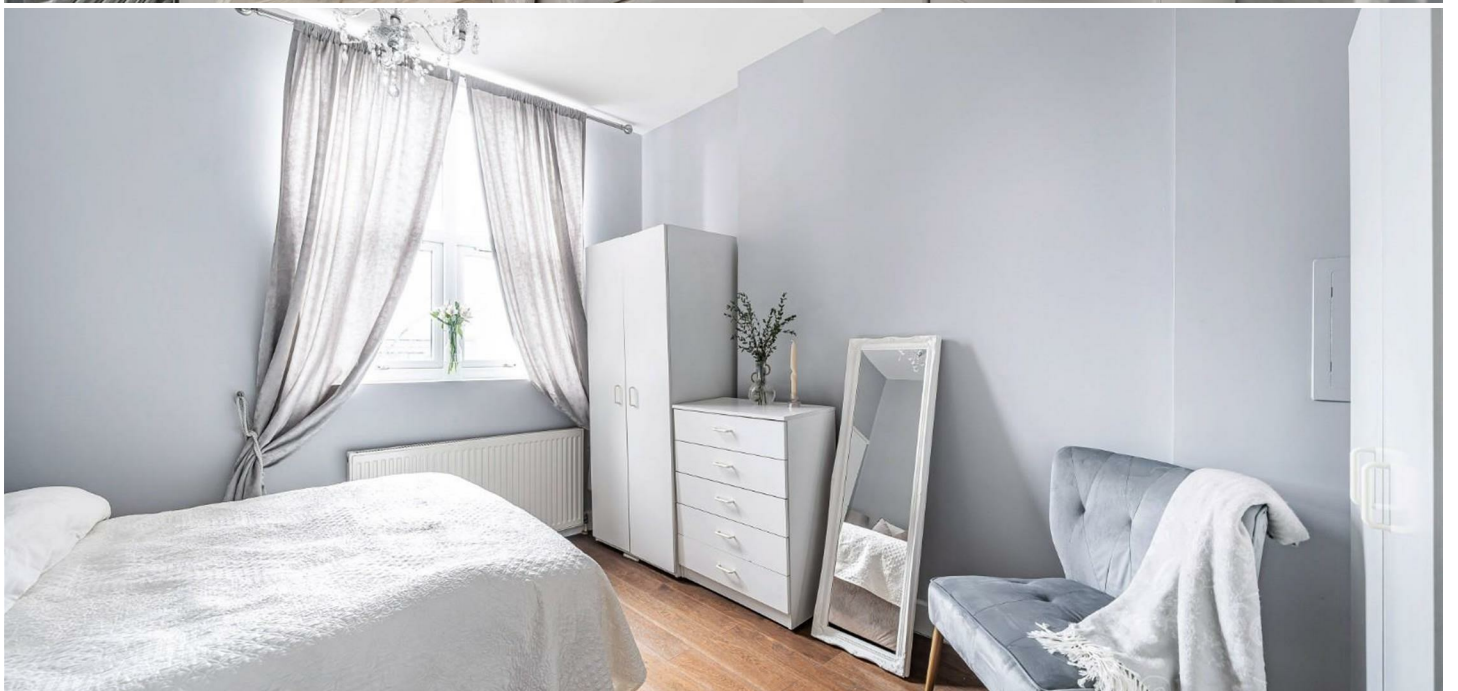
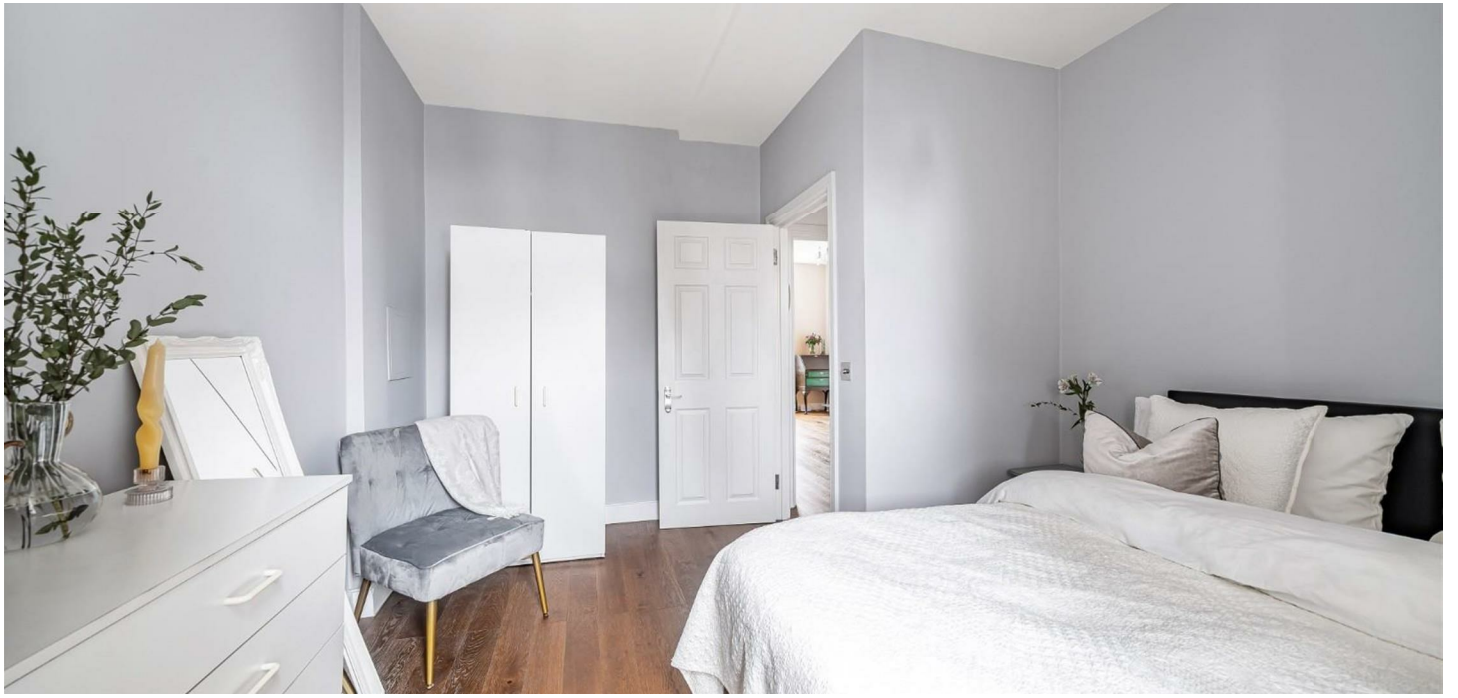
Built in 1885, this property exudes character and history, making it a unique find in today's market. The beautiful condition of the flat showcases the care and attention to detail that has been put into maintaining this Victorian gem.

Conveniently situated equidistant to both the Jubilee and Bakerloo Line tubes, commuting around the city will be a breeze. Whether you're looking for a first home or a stylish city pad, this property offers the perfect blend of comfort and convenience.

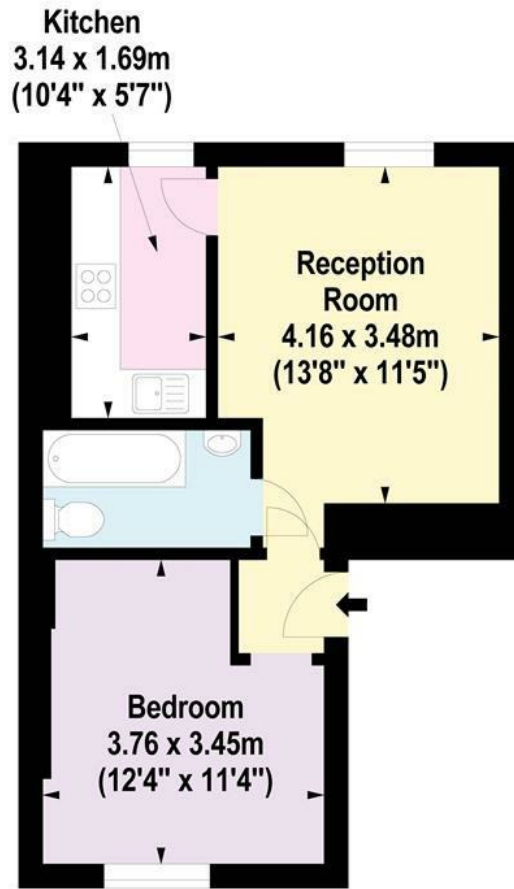
Don't miss out on the opportunity to own a piece of history in this sought-after location. Book a viewing today and step into your new home!

Area Map





Floor Plan



First Floor

For Identification Purposes Only. Not To Scale. © www.totalvista.uk 2024

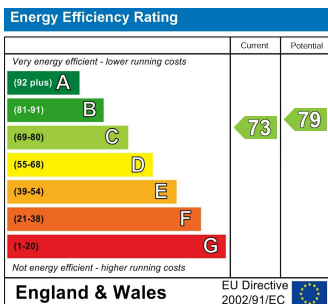


Saint Julian's Road , NW6

Approx. Gross Internal Area
37.44 Sq M - 403 Sq Ft



Energy Efficiency Graph



Viewing

Please contact our Sales QP Office on 0207 604 4040 if you wish to arrange a viewing appointment for this property or require further information.

For further information contact:

Sales QP, 2a Brondesbury Road, London, NW6 6AS

Tel: 0207 604 4040 Email: info@jorgensenturner.com <https://www.jorgensenturner.com/>

Disclaimer

These particulars, whilst believed to be accurate are set out as a general outline only for guidance and do not constitute any part of an offer or contract. Intending purchasers should not rely on them as statements of representation of fact, but must satisfy themselves by inspection or otherwise as to their accuracy. No person in this firm's employment has the authority to make or give any representation or warranty in respect of the property.

