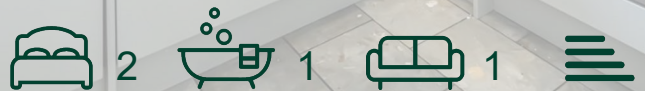




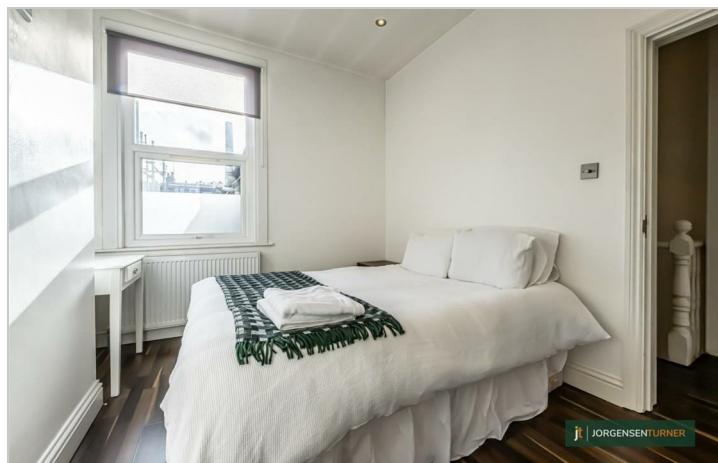
Charteris Road, Queens  
Park

£2,145 Per Month



# Charteris Road, Queens Park

£2,145 Per Month



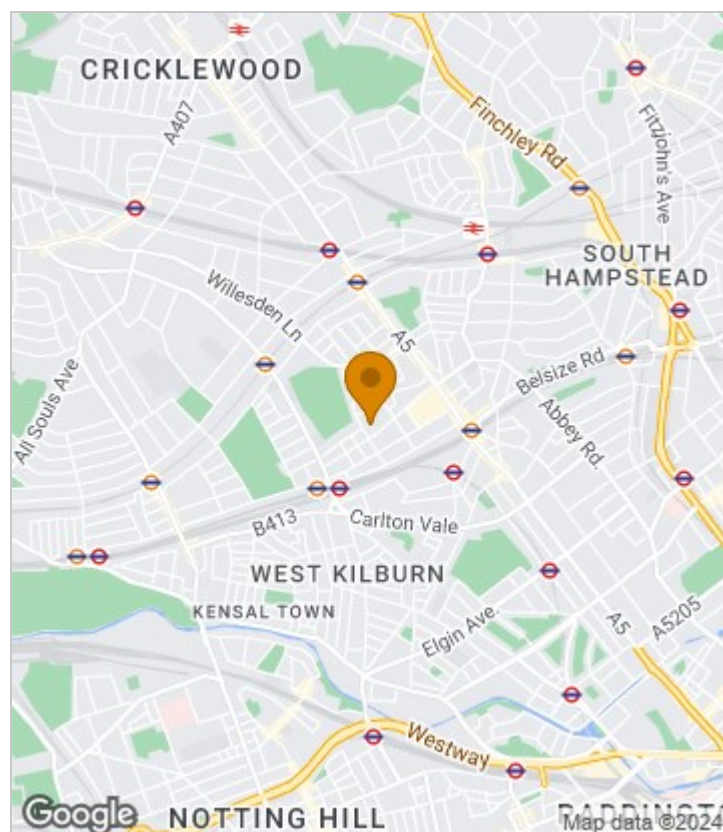
## Summary Description

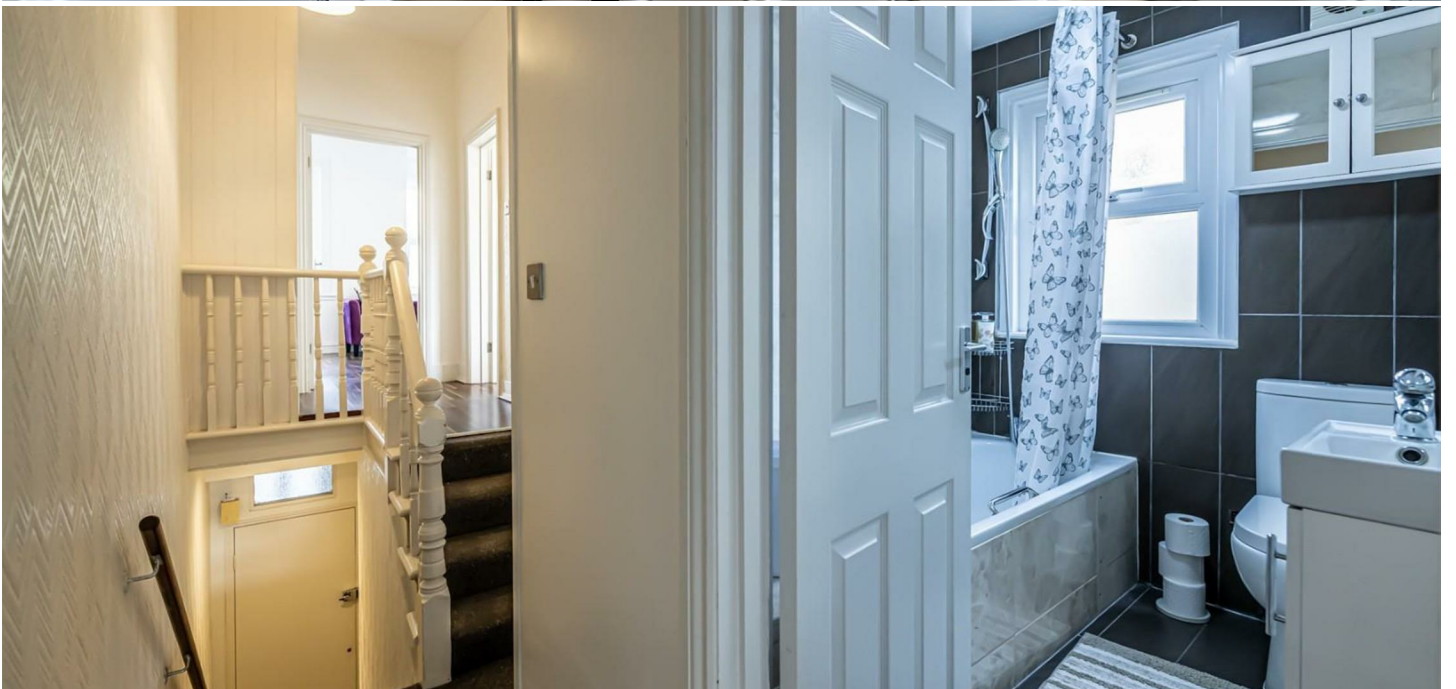
A well decorated spacious two bedroom first floor flat in one of the most sought after streets of Queens Park. The property comprises a large reception room with bay window, two double bedrooms, modern kitchen and lovely trendy bathroom. The property is offered fully furnished and is from the 14th June. Charteris Road is a lovely tree lined col-de-sac street which offers a peaceful stay yet convenient location with many local amenities nearby Queens Parks Salusbury Road and Kilburn High Road. Located close to Queens Park underground station (Bakerloo Line - Zone 2) and Kilburn Stations (Jubilee and overground station.)

Call Jorgensen Turner Estate Agents to arrange a viewing.

EPC rating D, Council tax band D, one week's deposit required, 5 weeks damage deposit required.

## Area Map

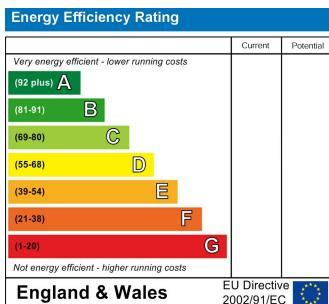




# Floor Plan



## Energy Efficiency Graph



## Viewing

Please contact our Lettings QP Office on 0207 604 4040 if you wish to arrange a viewing appointment for this property or require further information.

- Bright two bedroom flat
- Separate modern kitchen
- Close to Queens Park Station
- High ceiling
- Double glazed windows
- Comes furnished

For further information contact:

Lettings QP, 2a Brondesbury Road, London, NW6 6AS

Tel: 0207 604 4040 Email: [info@jorgensenturner.com](mailto:info@jorgensenturner.com) <https://www.jorgensenturner.com/>

## Disclaimer

These particulars, whilst believed to be accurate are set out as a general outline only for guidance and do not constitute any part of an offer or contract. Intending purchasers should not rely on them as statements of representation of fact, but must satisfy themselves by inspection or otherwise as to their accuracy. No person in this firm's employment has the authority to make or give any representation or warranty in respect of the property.

