





jt | JORGENSENTURNER



One Bedroom Flat with
Sunny Westerly Patio.

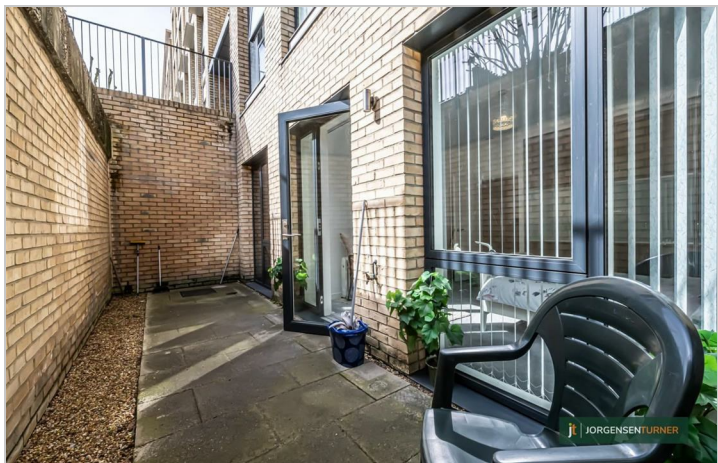
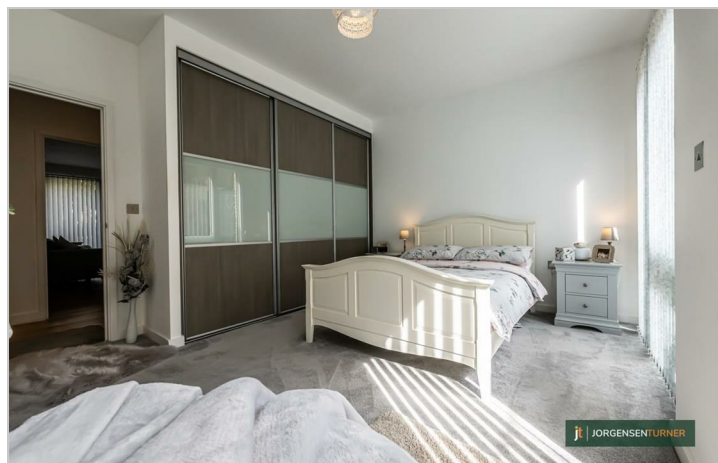
£450,000



jt |  1  1  1  C jt

One Bedroom Flat with Sunny Westerly Patio.

£450,000



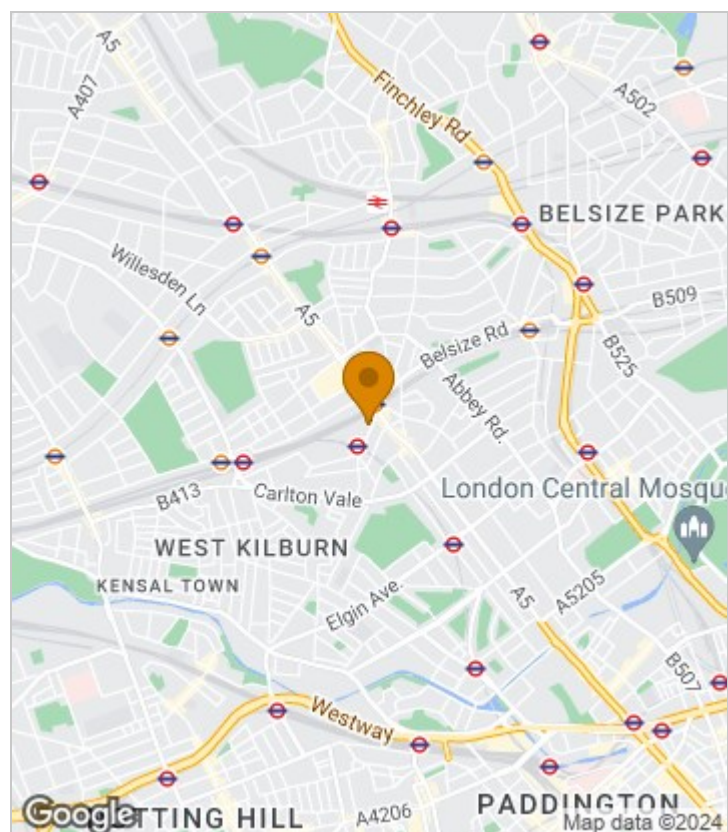
Summary Description

Beautifully presented one bedroomed flat which features a fantastic 21' by 13' Sitting Room and Kitchen leading to a sunny west facing patio and communal gardens, good sized double bedroom with fitted wardrobes and it's own patio and a modern bathroom. The location of this flat is super convenient being three minutes walk from Bakerloo line tubes at Kilburn park and also within easy reach of Overground and Jubilee line tubes and trains and a myriad of local shops and restaurants.

A beautiful flat at a great price.

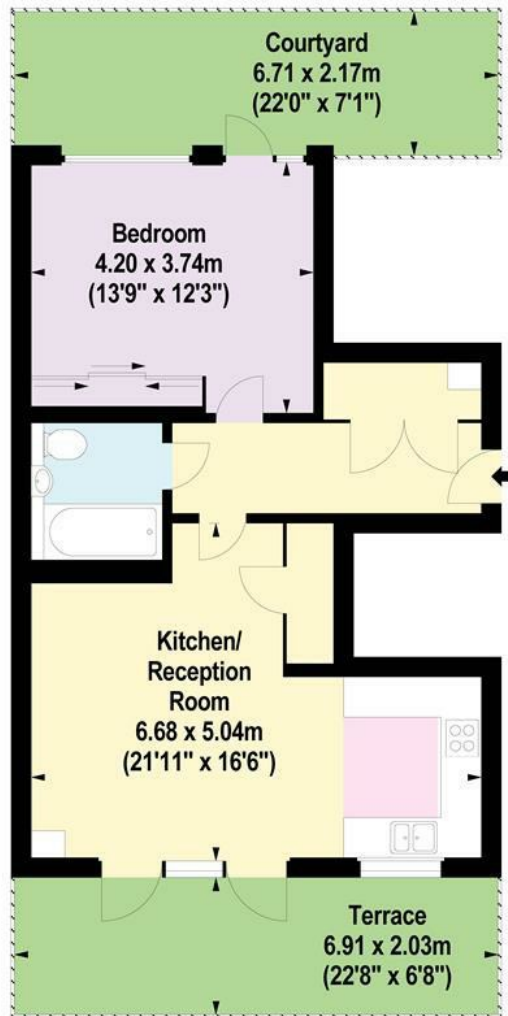
- * 21' Sitting Room and Kitchen.
- * Sunny Patio with westerly aspect.
- * Communal Gardens.
- * Gorgeous wooden flooring.
- * Double bedroom with fitted wardrobes.
- * Further Patio.
- * Long lease 986 years.
- * Communal Bike Storage.

Area Map





Floor Plan



Lower Ground Floor



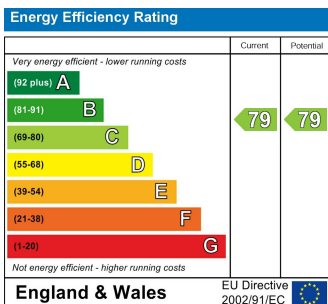
For Identification Purposes Only. Not To Scale. © www.totalvista.uk 2024

Cambridge Avenue, NW6

Approx. Gross Internal Area
56.85 Sq M - 612 Sq Ft



Energy Efficiency Graph



Viewing

Please contact our Sales QP Office on 0207 604 4040 if you wish to arrange a viewing appointment for this property or require further information.

For further information contact:

Sales QP, 2a Brondesbury Road, London, NW6 6AS

Tel: 0207 604 4040 Email: info@jorgensenturner.com <https://www.jorgensenturner.com/>



Disclaimer

These particulars, whilst believed to be accurate are set out as a general outline only for guidance and do not constitute any part of an offer or contract. Intending purchasers should not rely on them as statements of representation of fact, but must satisfy themselves by inspection or otherwise as to their accuracy. No person in this firm's employment has the authority to make or give any representation or warranty in respect of the property.