

Warwick Avenue, London, W9

Asking Price £649,950

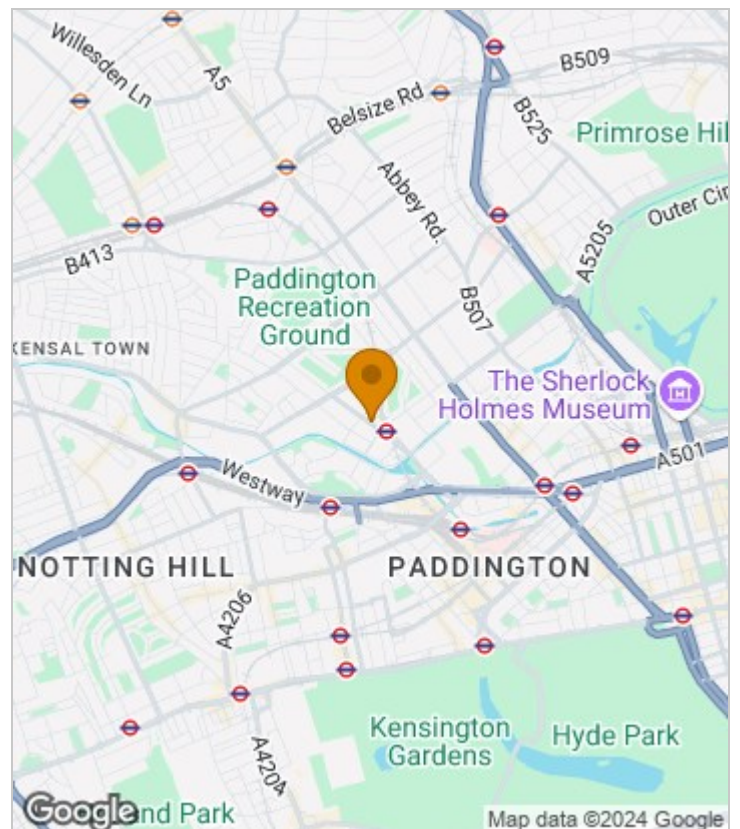


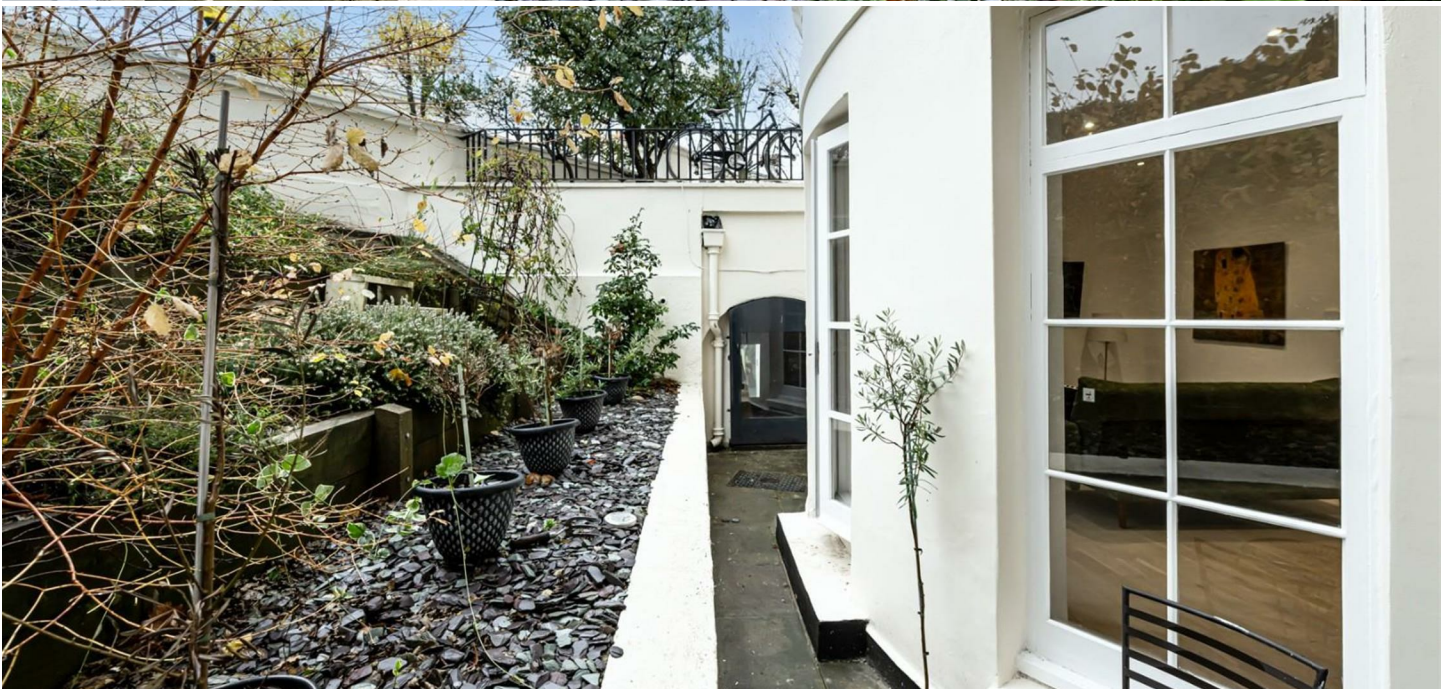
Summary Description

A wonderful one bedroom ground floor flat with direct access to front patio and use of large communal gardens to the rear. The flat has a fantastic location being three mins walk from Warwick Avenue tube station and with an abundance of good restaurants and shops close by. It offers a 20' Sitting Room with high ceilings and French doors to front patio (not demised) and huge storage vault (not demised), double bedroom with fitted wardrobes, modern kitchen with separate room for storage and large fridge/freezer and shower room. The flat also features a 977 year lease with share of freehold and low service charge. AVAILABLE IMMEDIATELY - NO CHAIN.

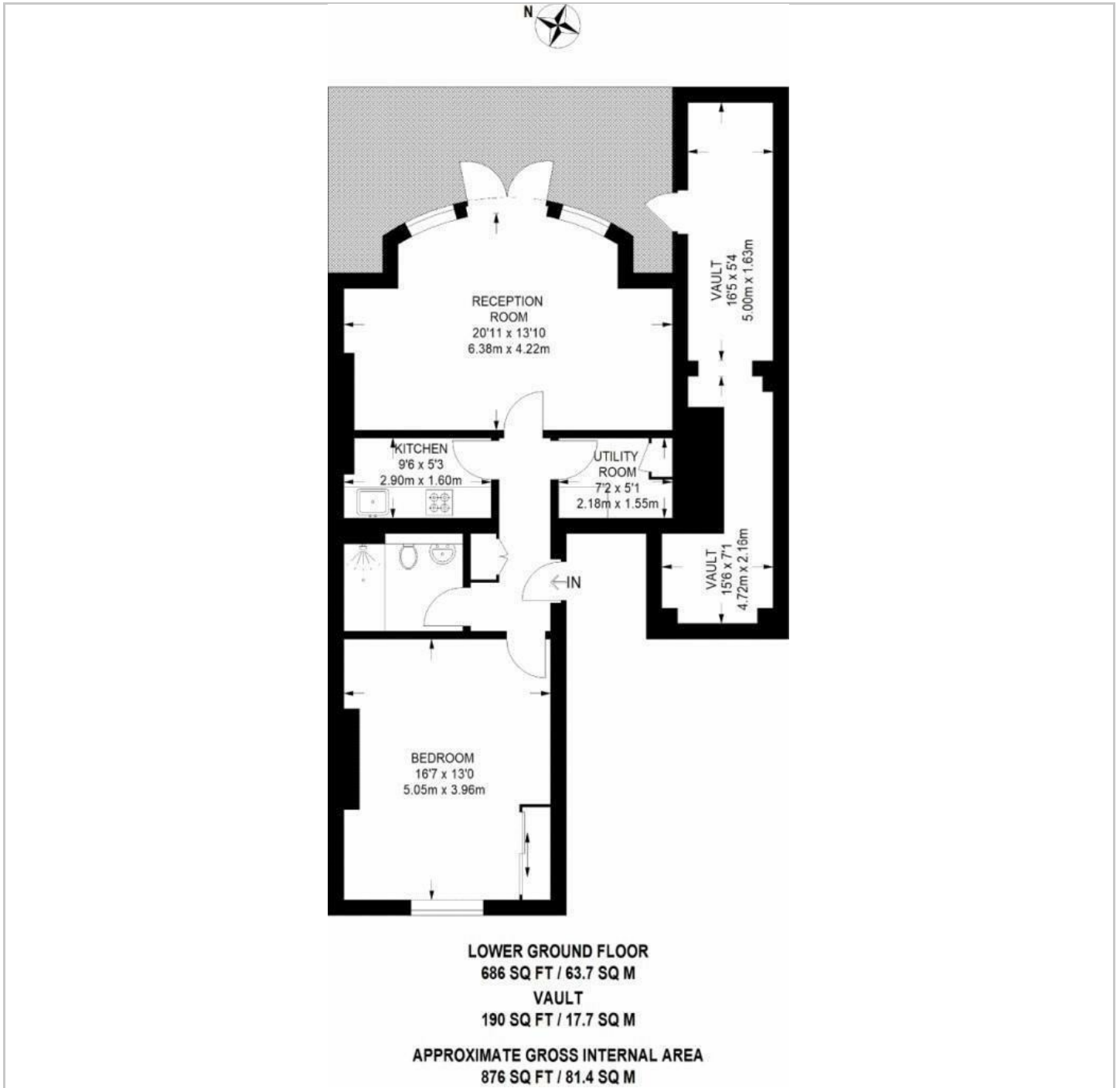
- * Prime Little Venice
- * 20' Sitting Room
- * Double Bedroom with fitted wardrobes
- * Modern Contemporary Kitchen
- * Access to huge Vault storage
- * Access to front Patio.
- * Well cared for Communal Garden
- * Modern Shower Room

Area Map

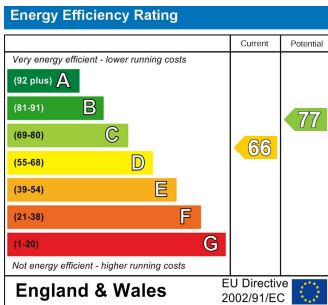




Floor Plan



Energy Efficiency Graph



Viewing

Please contact our Sales QP Office on 0207 604 4040 if you wish to arrange a viewing appointment for this property or require further information.

- STUNNING CONVERSION ▪ 20' RECEPTION ROOM FLAT
- STUNNING LITTLE VENICE ▪ VERY CLOSE TO THE TUBE AND CANAL
- OFFERED CHAIN FREE ▪ DIRECT ACCESS TO GARDENS

For further information contact:

Sales QP, 2a Brondesbury Road, London, NW6 6AS

Tel: 0207 604 4040 Email: info@jorgensenturner.com <https://www.jorgensenturner.com/>

Disclaimer

These particulars, whilst believed to be accurate are set out as a general outline only for guidance and do not constitute any part of an offer or contract. Intending purchasers should not rely on them as statements of representation of fact, but must satisfy themselves by inspection or otherwise as to their accuracy. No person in this firm's employment has the authority to make or give any representation or warranty in respect of the property.

