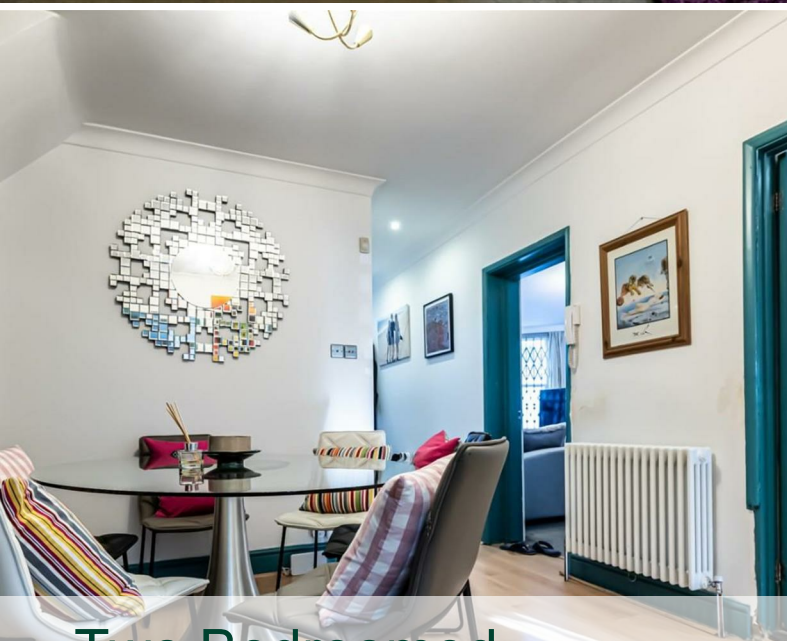






jt | JORGENSENTURNER



Two Bedroomed  
Maisonette, Mapesbury

Guide Price £625,000

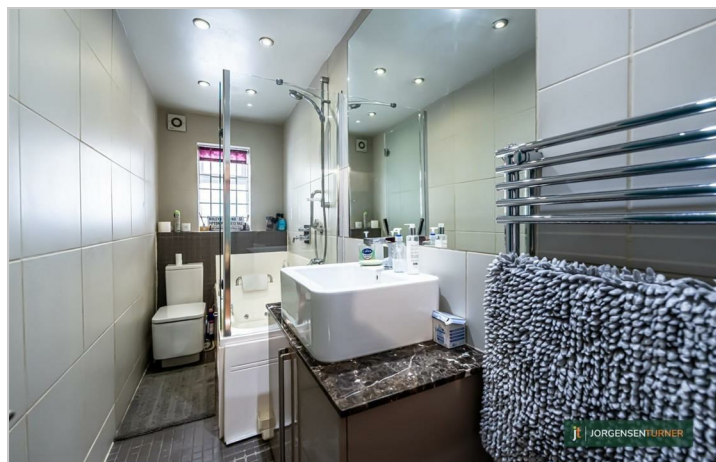


jt |  2  2  1  C jt



# Two Bedroomed Maisonette, Mapesbury

Guide Price £625,000

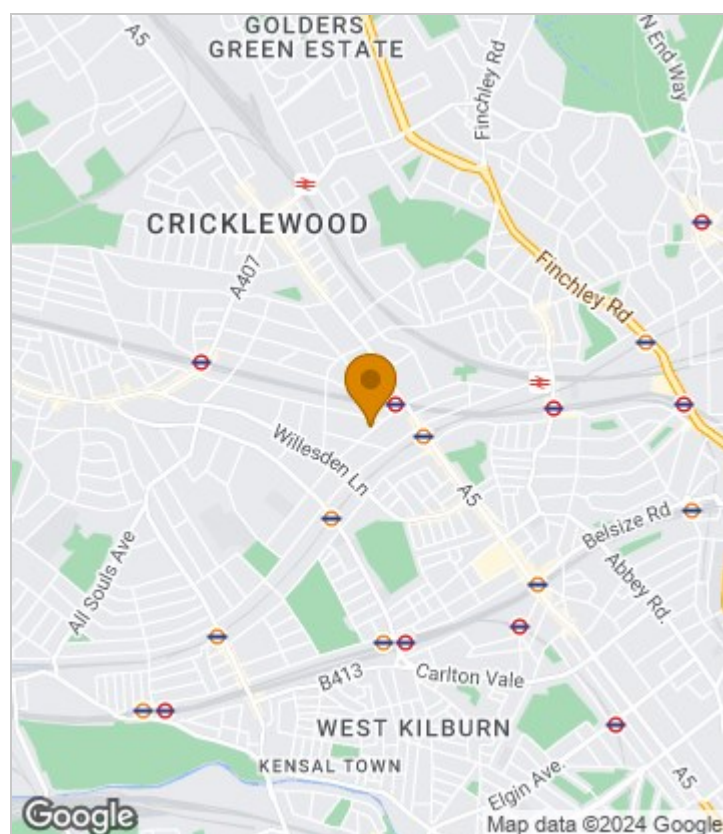


## Summary Description

Wonderfully spacious two double bedroomed flat situated on the ground floor of a Character Victorian house located moments from Jubilee line tubes. The flat is offered in good order and features a 19' Sitting Room, modern fitted kitchen, really useful large central hallway currently used as a dining area, modern bathroom, off street parking and direct access to a beautiful huge communal garden. Other features include:

- \* Thameslink trains less than a mile away.
- \* Share of Freehold
- \* Own Parking Space
- \* Large Communal Garden
- \* Bathroom and further Shower Room
- \* Modern Fitted Kitchen
- \* Gorgeous Dining Area in Hall
- \* Own Front Door

## Area Map

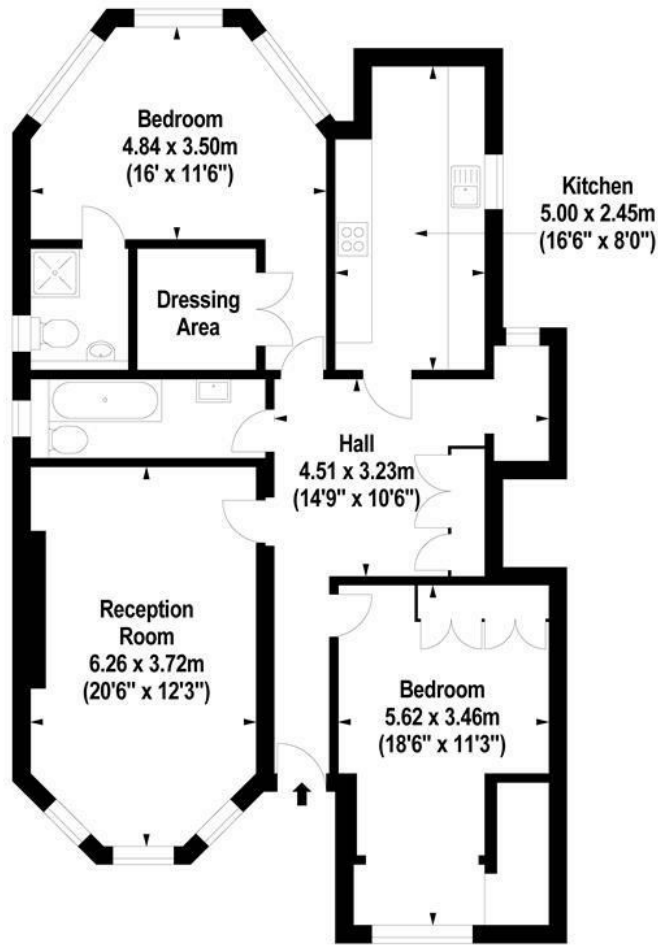








# Floor Plan



Lower Ground Floor

For Identification Purposes Only. Not To Scale. © www.totalvista.uk 2024

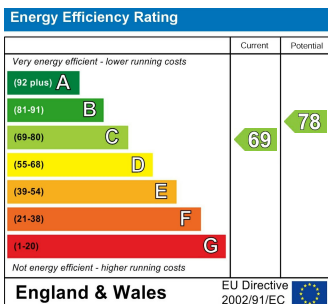


Christchurch Avenue, NW6

Approx. Gross Internal Area  
102.65 Sq M - 1105 Sq Ft



## Energy Efficiency Graph



## Viewing

Please contact our Sales QP Office on 0207 604 4040 if you wish to arrange a viewing appointment for this property or require further information.

For further information contact:

Sales QP, 2a Brondesbury Road, London, NW6 6AS

Tel: 0207 604 4040 Email: [info@jorgensenturner.com](mailto:info@jorgensenturner.com) <https://www.jorgensenturner.com/>



## Disclaimer

These particulars, whilst believed to be accurate are set out as a general outline only for guidance and do not constitute any part of an offer or contract. Intending purchasers should not rely on them as statements of representation of fact, but must satisfy themselves by inspection or otherwise as to their accuracy. No person in this firm's employment has the authority to make or give any representation or warranty in respect of the property.