

Split Level Maisonette,
Maida Vale, NW6 5EY

Asking Price £449,950



2



1



1

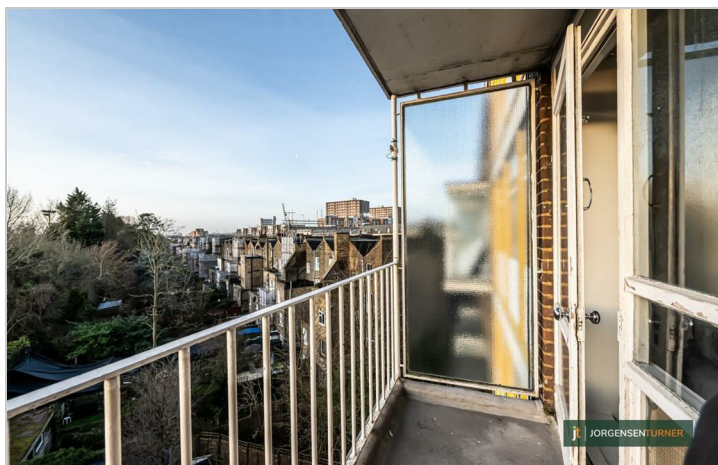


D



Split Level Maisonette, Maida Vale, NW6 5EY

Asking Price £449,950

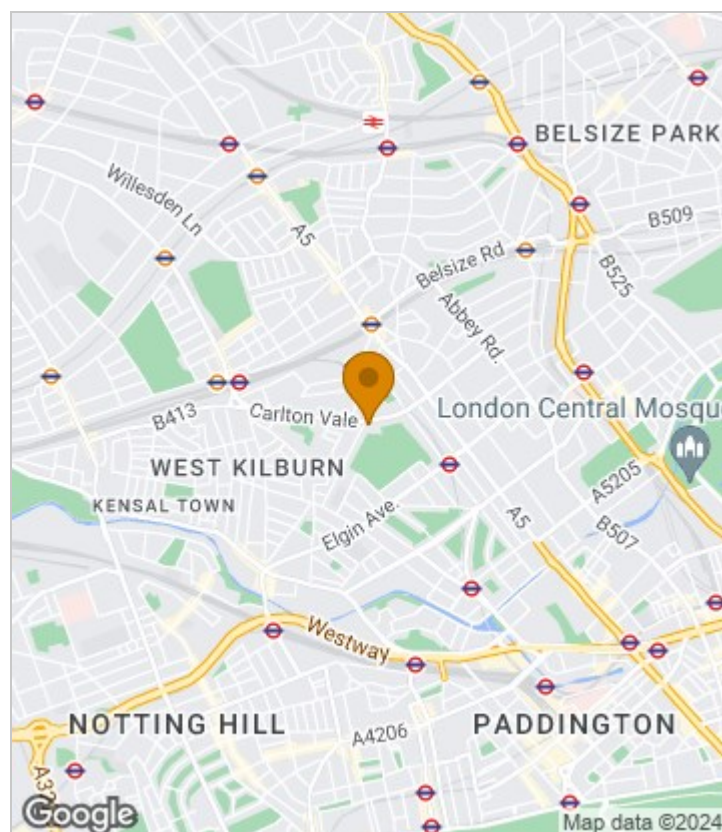


Summary Description

A spacious split level maisonette set on the fourth and fifth floors of a modern purpose built block conveniently located in north Maida Vale. The flat is in good order and features two double bedrooms, a 16' sitting room with southerly views and balcony, modern kitchen and bathroom and central heating. AVAILABLE IMMEDIATELY.

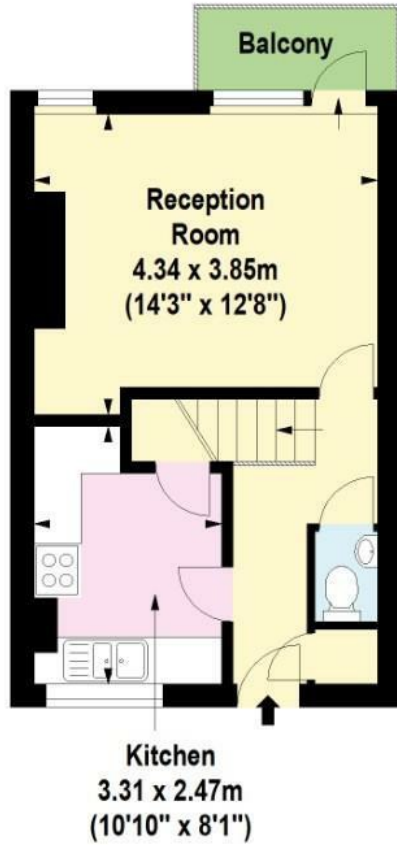
- * Two Double Bedrooms
- * Balcony
- * 16' Sitting Room
- * Modern Fitted Kitchen
- * Modern Bathroom
- * Sole Agents

Area Map

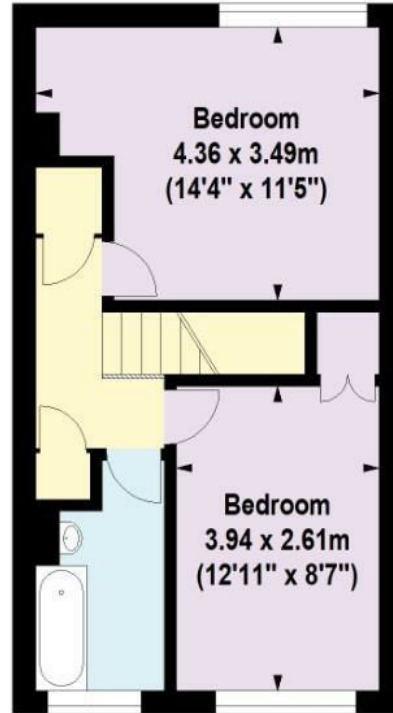




Floor Plan



Fourth Floor



Fifth Floor

For Identification Purposes Only. Not To Scale. © www.totalvista.uk 2024

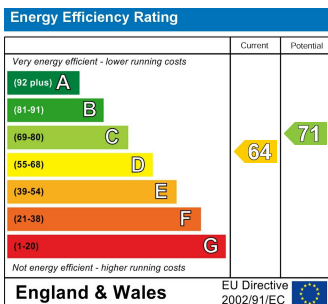


Melrose House,
Carlton Vale, NW6

Approx. Gross Internal Area
69.77 Sq M - 751 Sq Ft



Energy Efficiency Graph



Viewing

Please contact our Sales QP Office on 0207 604 4040 if you wish to arrange a viewing appointment for this property or require further information.

For further information contact:

Sales QP, 2a Brondesbury Road, London, NW6 6AS

Tel: 0207 604 4040 Email: info@jorgensenturner.com <https://www.jorgensenturner.com/>



Disclaimer

These particulars, whilst believed to be accurate are set out as a general outline only for guidance and do not constitute any part of an offer or contract. Intending purchasers should not rely on them as statements of representation of fact, but must satisfy themselves by inspection or otherwise as to their accuracy. No person in this firm's employment has the authority to make or give any representation or warranty in respect of the property.