

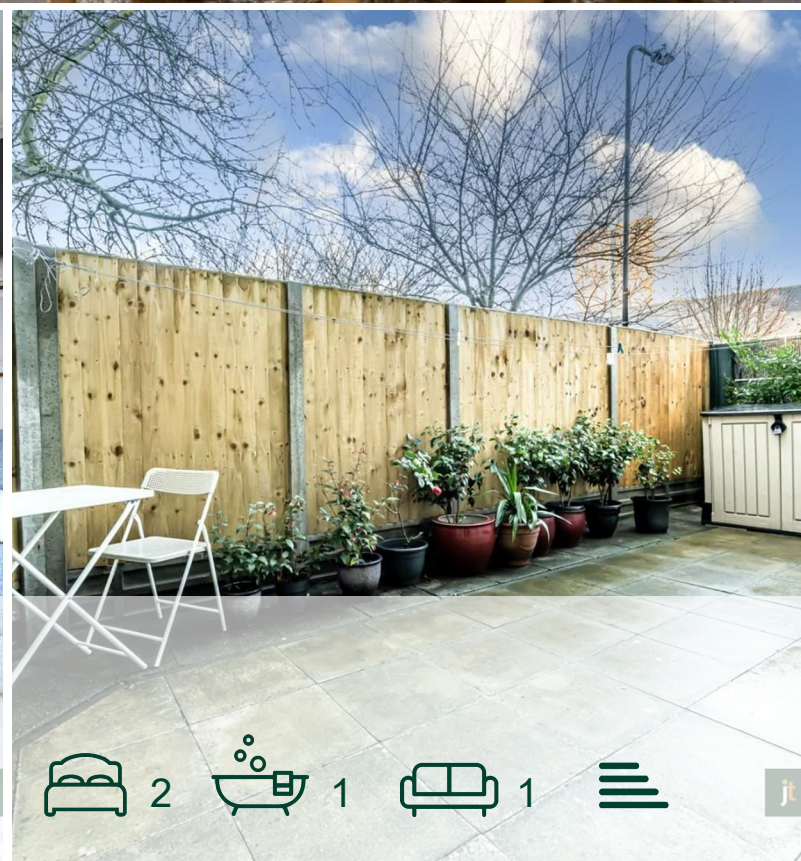


jt | JORGENSENTURNER



Pavilion Court, North
Maida Vale, London

£550,000



jt  2  1  1  jt

Pavilion Court, North Maida Vale, London

£550,000



Summary Description

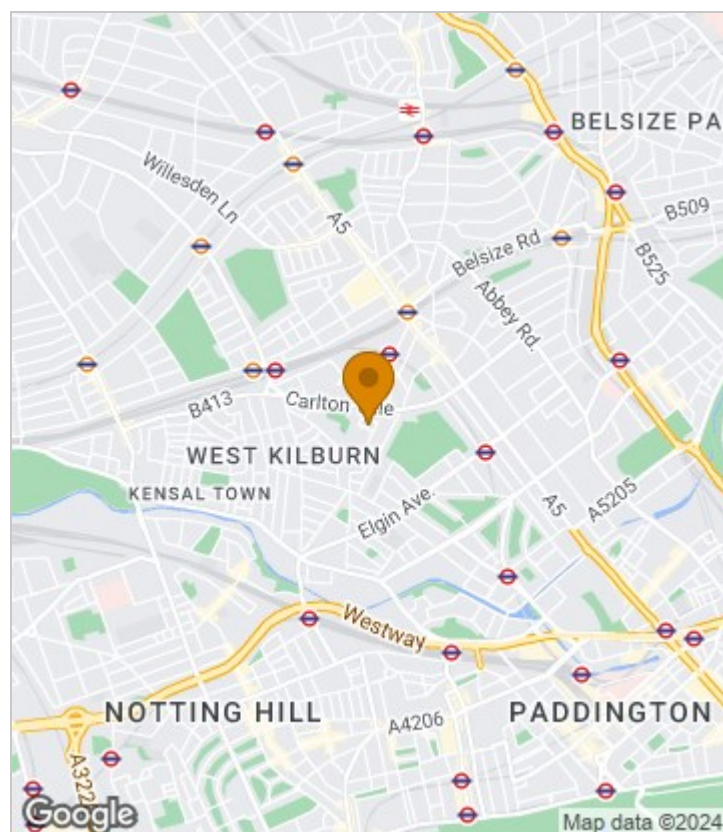
Introducing a captivating 2-bedroom flat with direct garden access on the ground floor.

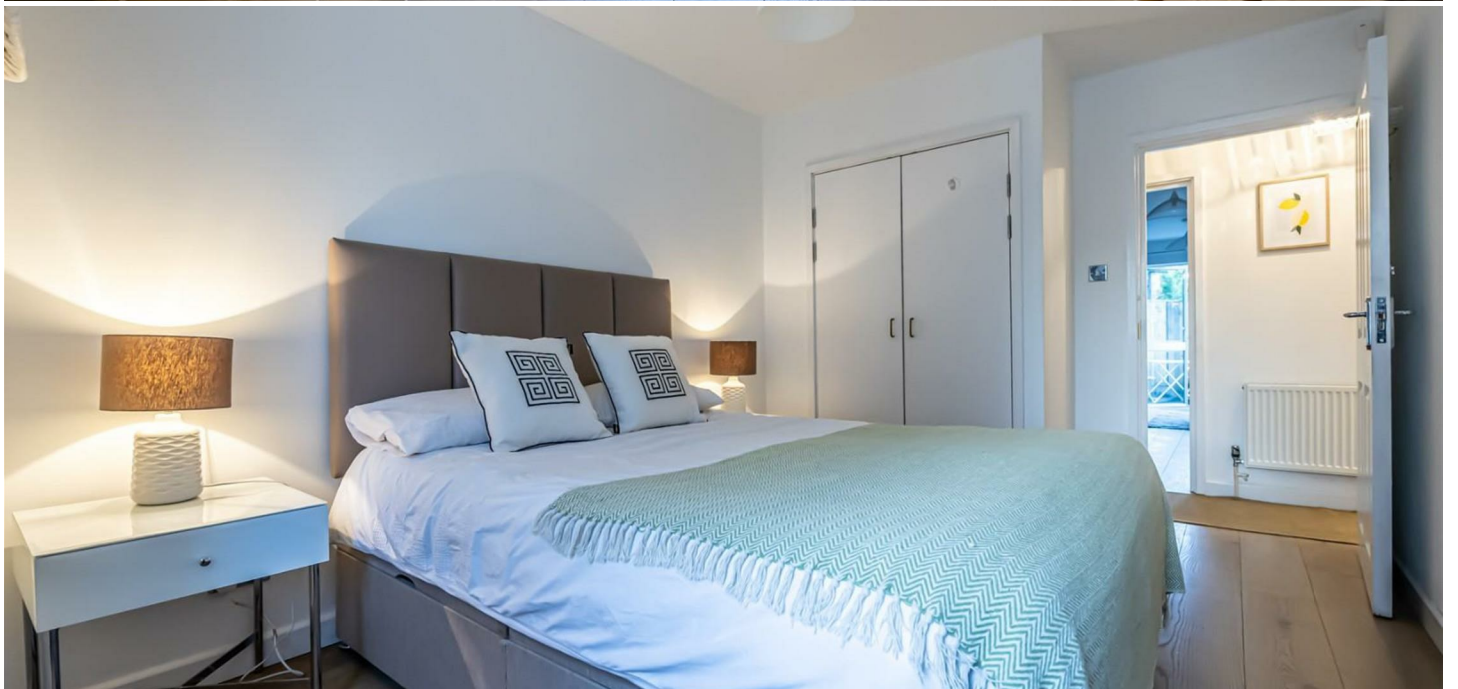
Immerse yourself in the allure of recently refurbished interiors, with ample storage throughout. This property showcases 2 double bedrooms, a contemporary bathroom, and a fully fitted modern kitchen.

Positioned perfectly for an exceptional living experience, relish the convenience of nearby amenities such as Paddington Rec and seamless transport links. Your ideal home awaits – seize the opportunity.

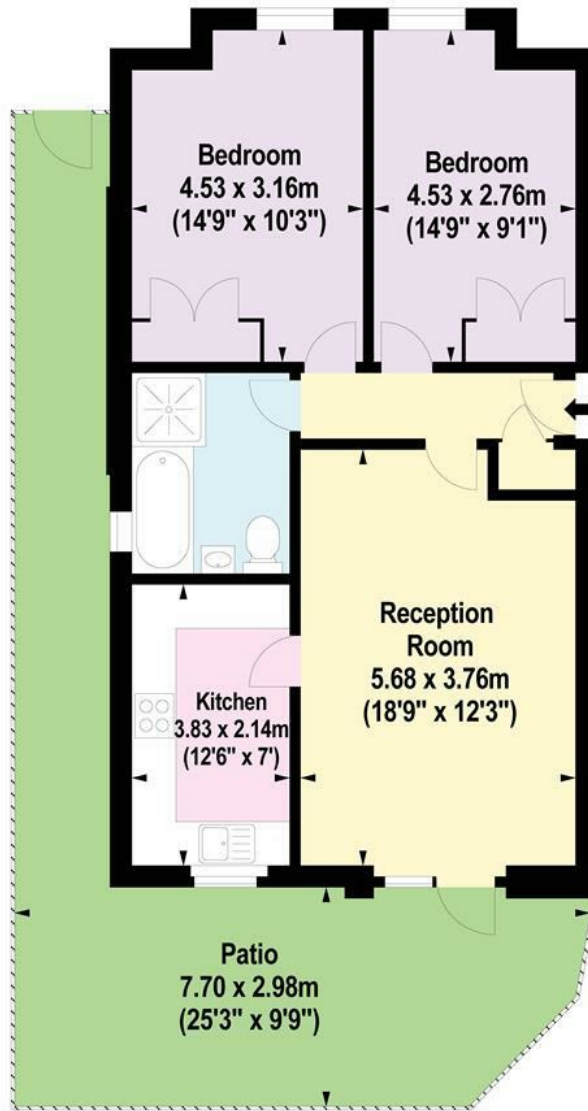
SC- approx £132.37 pm and Remaining lease- approx 107 years

Area Map





Floor Plan



Ground Floor

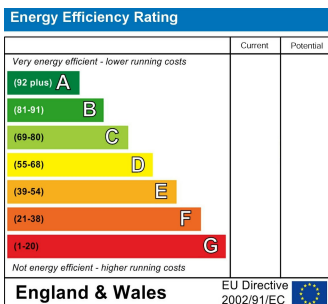
For Identification Purposes Only. Not To Scale. © www.totalvista.uk 2023

**Pavilion Court,
Stafford Road, NW6**

Approx. Gross Internal Area
68.00 Sq M - 732 Sq Ft



Energy Efficiency Graph



Viewing

Please contact our Sales QP Office on 0207 604 4040 if you wish to arrange a viewing appointment for this property or require further information.

- Two double bedrooms
- Garden
- Prime location
- Modern interior
- Ample storage
- Transport links close by

For further information contact:

Sales QP, 2a Brondesbury Road, London, NW6 6AS

Tel: 0207 604 4040 Email: info@jorgensenturner.com <https://www.jorgensenturner.com/>

Disclaimer

These particulars, whilst believed to be accurate are set out as a general outline only for guidance and do not constitute any part of an offer or contract. Intending purchasers should not rely on them as statements of representation of fact, but must satisfy themselves by inspection or otherwise as to their accuracy. No person in this firm's employment has the authority to make or give any representation or warranty in respect of the property.

