

Estate &
Letting Agents

dwell

Autumn Place
Burley
Leeds
LS6 1RJ
£150,000



0113 246 4860

5/6 St Chad's Parade, Otley Road,
Far Headingley, Leeds. LS16 5JH

info@dwell-leeds.com
www.dwell-leeds.com

Property Details

- 3 Bedrooms, 2 doubles and 1 single
- Set over 4 floors
- Separate kitchen and living room
- Ideal investment property
- Can be rented to both students and professionals
- Includes appliances and furniture
- Sold with vacant possession
- Ideal popular location
- Close to the universities
- Close to the city centre

0113 246 4860

5/6 St Chad's Parade, Otley Road,
Far Headingley, Leeds. LS16 5JH

info@dwel-leeds.com
www.dwell-leeds.com

Estate &
Letting Agents

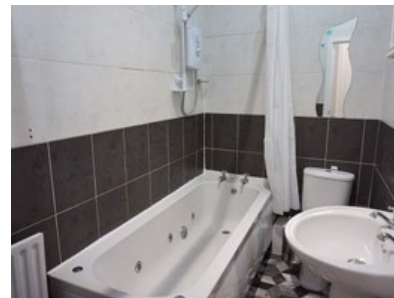
dwel

Property Description

Fantastic opportunity to purchase this 3-bedroom end terraced house in the very popular Hyde Park area of Leeds. Appealing to both home buyers and investors, this property would let well to either 2 professionals or students. Including all the furniture within the sale, with no onward chain, this property is ready to let upon completion.

Three bedroomed furnished back to back end terraced house, situated over four floors, in a very popular location in Hyde Park. The property is ideally positioned for the universities, shops, pubs, restaurants, and the city centre. There is also a number of transport links close by making this a fantastically convenient property. Suitable for both professional and student letting. Previous tenancy has just finished in March 2023. Estimated rental value on remarket of £850pcm. Please ask for further details on our managed letting service. **ENTRANCE HALL / DINING AREA** Large entrance hallway, currently used as a dining area with laminate flooring and double glazed window. **LIVING ROOM** Separate living room to the lower ground floor with grey carpet, 3 seater sofa, armchair and wall mounted smart TV, storage cupboard and fire exit window. **KITCHEN** A fitted kitchen having wood effect units and black work surfaces, laminate flooring, tiled splash back tiles, integrated electric oven and hob

Gallery



0113 246 4860

5/6 St Chad's Parade, Otley Road,
Far Headingley, Leeds. LS16 5JH

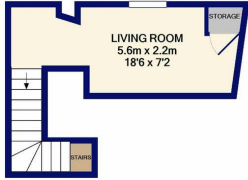
info@dwel-leeds.com
www.dwell-leeds.com

Estate &
Letting Agents

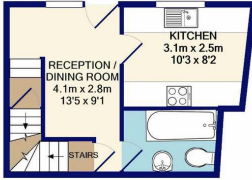
dwell

Floor Plan - Total floor area

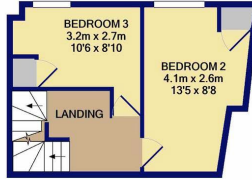
Floor Plans & Area Map



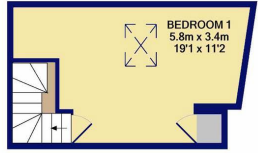
BASEMENT LEVEL
APPROX. FLOOR
AREA 14.1 SQ.M.
(152 SQ.FT.)



GROUND FLOOR
APPROX. FLOOR
AREA 22.6 SQ.M.
(243 SQ.FT.)

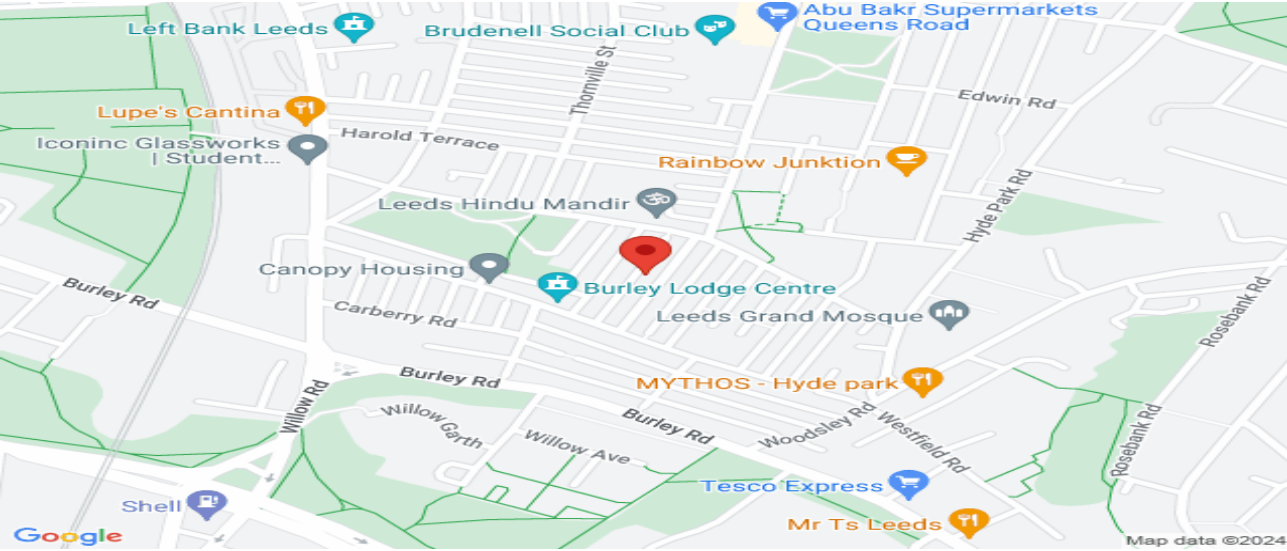


1ST FLOOR
APPROX. FLOOR
AREA 22.6 SQ.M.
(243 SQ.FT.)



2ND FLOOR
APPROX. FLOOR
AREA 18.7 SQ.M.
(201 SQ.FT.)

TOTAL APPROX. FLOOR AREA 78.0 SQ.M. (839 SQ.FT.)
Whilst every attempt has been made to ensure the accuracy of the floor plan contained here, measurements of doors, windows, rooms and any other items are approximate and no responsibility is taken for any error, omission, or mis-statement. This plan is for illustrative purposes only and should be used as such by any prospective purchaser. The services, systems and appliances shown have not been tested and no guarantee as to their operability or efficiency can be given.
Made with Metropex ©2021



0113 246 4860

5/6 St Chad's Parade, Otley Road,
Far Headingley, Leeds. LS16 5JH

info@dwell-leeds.com
www.dwell-leeds.com



Agents Note: Whilst every care has been taken to prepare these sales particulars, they are for guidance purposes only. All measurements are approximate and for general guidance purposes only and whilst every care has been taken to ensure their accuracy, they should not be relied upon and potential buyers are advised to recheck the measurements

Energy
Performance
Rating

E