



**St Stephens Court**  
Silver Street, Stansted, CM24 8GA

Guide Price of **£260,000**



# St Stephens Court

Silver Street, Stansted, CM24 8GA

## Overview

- Second Floor Apartment
- Modern Interior Design
- Two Double Bedrooms
- Open-Plan Living Area
- Fitted Kitchen with Integrated Appliances
- Family Sized Tiled Bathroom
- En-Suite Shower Room
- Popular Development
- Close to Local Amenities
- Allocated Secure Parking Space
- Energy Rating B and Council Tax Band D
- Rental Investment – Yield of 6%



## Description

PM Estates are pleased to introduce this modern second floor apartment within the sought-after St Stephens Court Development within the idyllic village of Stansted Mountfitchet, to the sales market.

The open-plan lounge area is complemented by the contemporary interior design, with the addition of a feature window in contrast to the two-tone kitchen and granite style worktops. With the added benefit of integrated appliances including Dishwasher, and access to balcony areas within this room, this creates a bright, minimalistic, and airy environment.

Two good double sized bedrooms including a family sized bathroom and en-suite shower room adjacent to the master bedroom, complete with fitted suites.

St Stephens Court is a highly regarded private residential development and located a five-minute walk from the mainline rail station which offers direct services to London Liverpool Street, Cambridge, and Stansted Airport. The development is also close to local amenities, such as the Dog and Duck Pub and Café Yeomans, Linden House Guesthouse and a Tesco Express Store, to name but a few. This exceptionally large two-bedroom apartment has the added benefit of a secured and underground, allocated parking bay.

For investors, this will prove to be an ideal choice whereby the rental value currently stands at £1,400 per calendar month, providing a healthy rental yield of 6%

### Additional Property Details:

- Lease Length - There are 107 years remaining on the lease
- Ground Rent - (Payable by Leaseholder) £125 every 6 months - total £250 for the year, collected by the freeholder.
- Service Charge - (Payable by Leaseholder) total is £1,355.16, paid twice a year, totalling £2,710.32

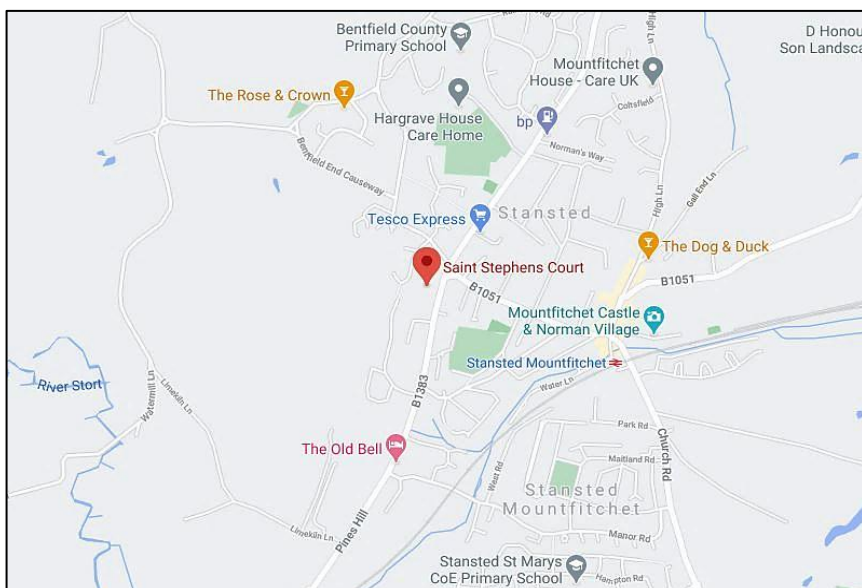


Score	Energy rating	Current	Potential
92+	A		
81-91	B	83 B	83 B
69-80	C		
55-68	D		
39-54	E		
21-38	F		
1-20	G		



Stansted Mountfitchet is a historic village that dates back to the Roman era. It is recognized by its large windmill, which can be seen throughout Stansted and was constructed in 1878. Most famously known for London's Stansted Airport, which is one stop away on the train, or just a 10-minute bus journey. Despite the close proximity to the airport, Stansted is one of the only places within the surrounding area that has no flight paths, enhancing its quiet and picturesque village atmosphere.

The village has grown larger in size over recent years and is becoming an ever-popular location for families and commuters alike, as its fantastic transport links are complemented by its quaint shops and boutiques. The appeal is enhanced as Stansted is only 3 miles from the market town of Bishops Stortford which offers a large indoor shopping centre, many restaurants and bars and a weekly market within its high street, encapsulation and promoting the areas historical roots.

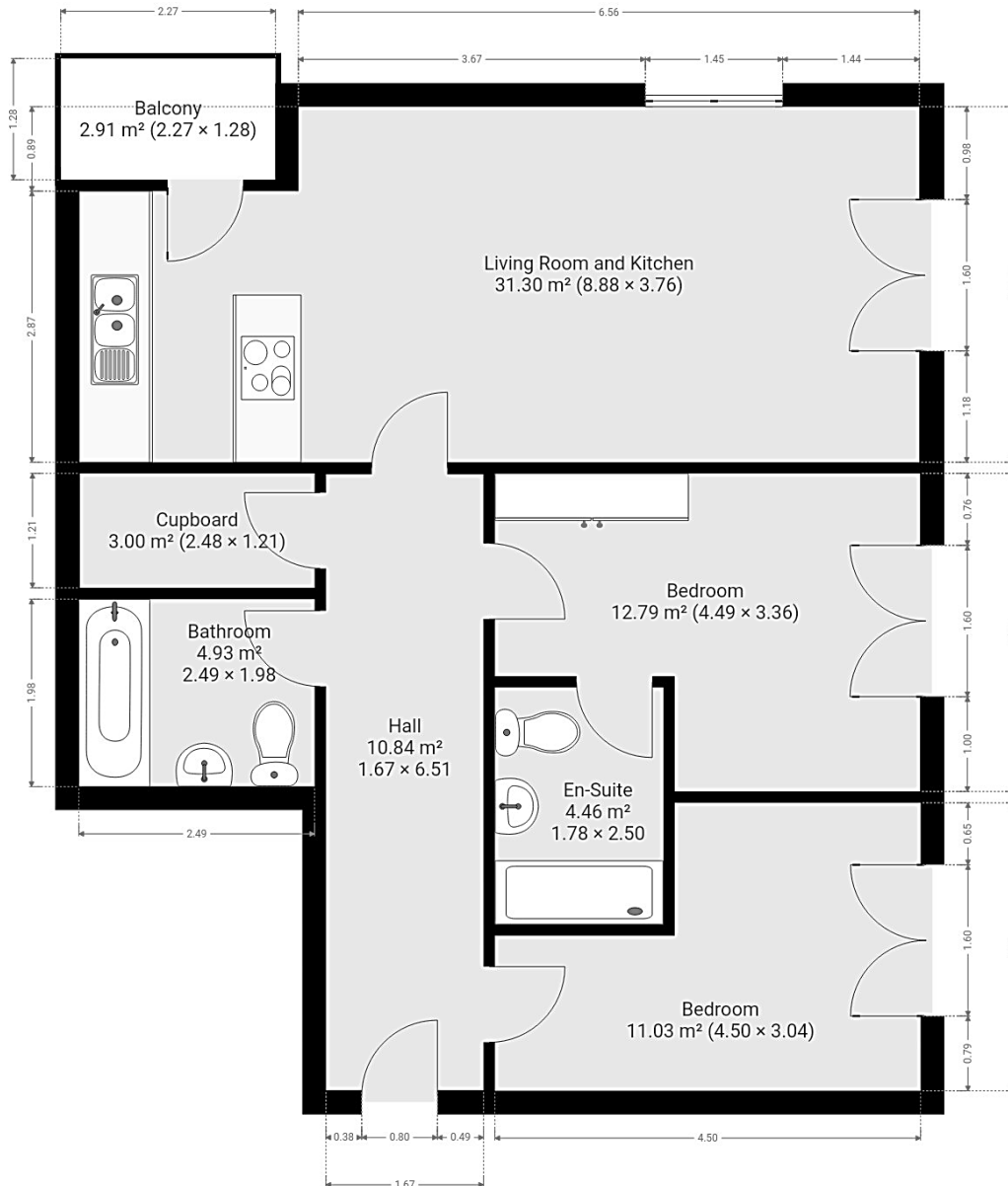


## **Directions**

From our office:

- Turn right on Adderley Road (A1059)
- At the traffic lights, turn right onto the causeway (A1250).
- At the roundabout, take the first exit to continue straight on Hockerill Street.
- At Hockerill Street traffic lights, turn left on to Stansted Road (B1383) continue straight for 1.3 miles.
- At the roundabout, take the second exit to continue on Stansted Road for 1.4 miles.
- Upon entering Stansted, you will see the development on your left. St Stephens Court is located directly opposite Lindon House Hotel.

# Floor Plan



7 Riverside Walk, South Street, Bishop's Stortford, Herts CM23 3AG

Tel: 01279 654646

Email: [info@pm-estates.co.uk](mailto:info@pm-estates.co.uk)

[www.pm-estates.co.uk](http://www.pm-estates.co.uk)

PM Estates wish to advise prospective purchasers that we have not checked the services or appliances. The sales particulars have been prepared as a guide only; any floor-plan or map is for illustrative purposes only. PM Estates, for themselves and for the vendors or lessors of this property whose agents they are give notice that: the particulars have been produced in good faith; do not constitute any part of a contract; no person in the employment of PM Estates has any authority to make or give any representation of warranty in relation to this property.

P820