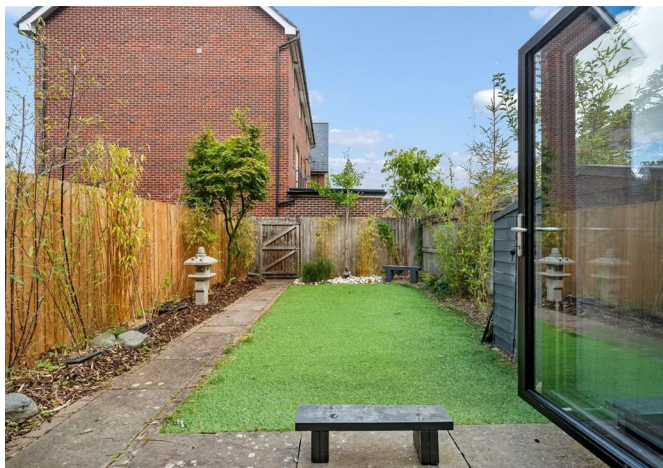


6 Millington Gardens, Lymm, WA13 9UJ

£400,000



6 Millington Gardens, Lymm, WA13 9UJ

£400,000

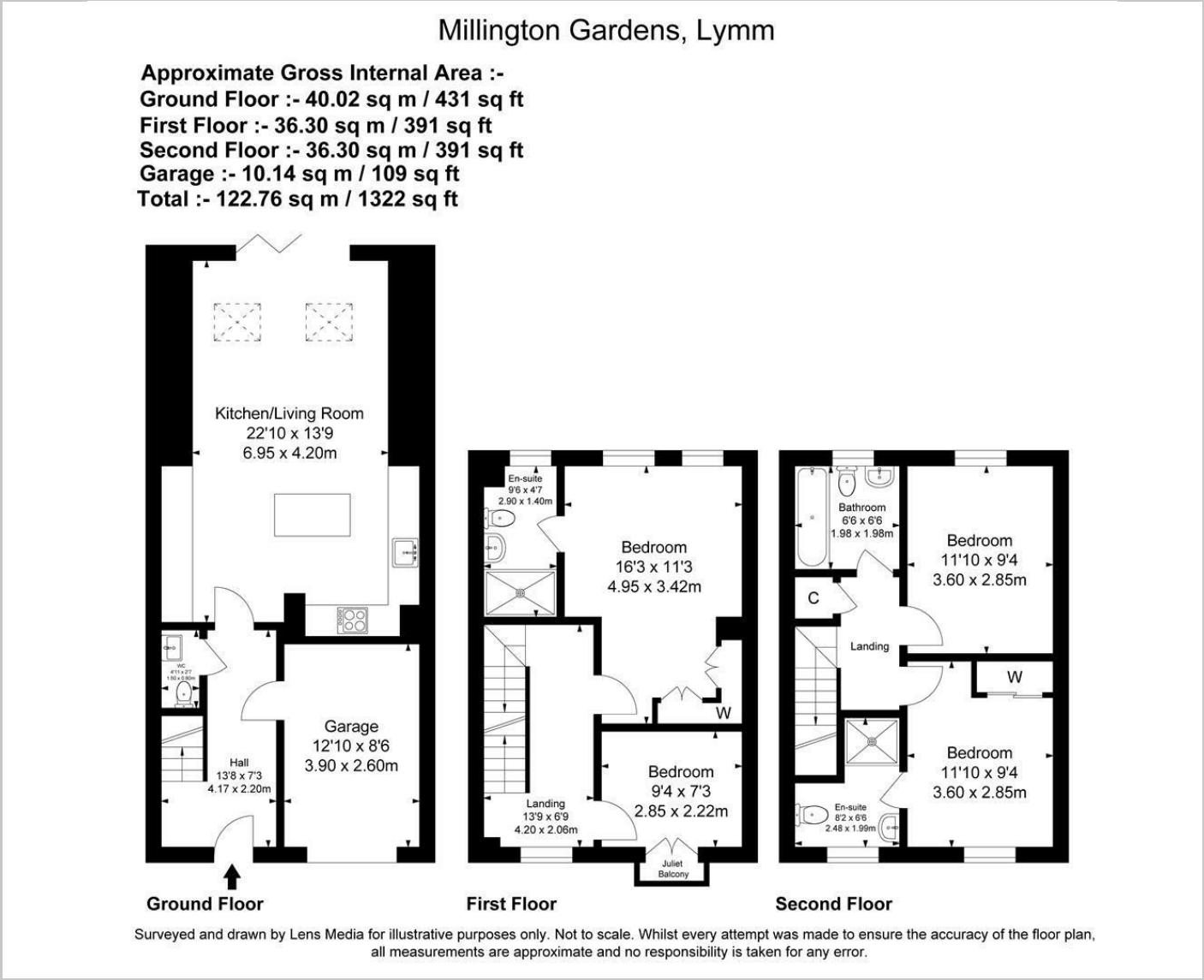
Beautifully presented and extended modern town house close to Heatley Mere on Millington Gardens. The property is approached over a driveway leading to the integral garage. There is a hallway with cloakroom/wc and access to the garage. Fabulous extended kitchen/dining/family room, with bifold doors leading into the garden. On the first floor there is a double bedroom with fitted wardrobes and ensuite and a further bedroom/office with Juliette balcony. On the second floor a landing gives access to a double bedroom with wardrobe and ensuite shower, another double bedroom and a refitted family bathroom. There is a very useful loft with ladder, power and light. This is a great family home with flexible accommodation.;

Description



Council Tax Band: E

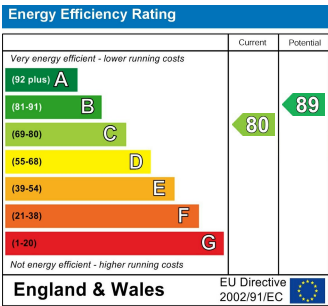
Floor Plans



Area Map



Energy Performance Graph



These particulars, whilst believed to be accurate are set out as a general outline only for guidance and do not constitute any part of an offer or contract. Intending purchasers should not rely on them as statements of representation of fact, but must satisfy themselves by inspection or otherwise as to their accuracy. No person in this firms employment has the authority to make or give any representation or warranty in respect of the property.