



26 Oulton Court, Grappenhall, Grappenhall, Cheshire, WA4 2NT

£83,500





26 Oulton Court, Grappenhall, Grappenhall, Cheshire, WA4 2NT

£83,500

Beautifully decorated and improved, this first floor retirement apartment offers modern spacious accommodation comprising hallway with store room, light and airy lounge with feature fireplace and laminate flooring open to a modern newly fitted kitchen. There is a double bedroom with fitted wardrobe and newly fitted shower room. Ready to move into close to the lift. Communal gardens, parking and communal reception area.



## Description

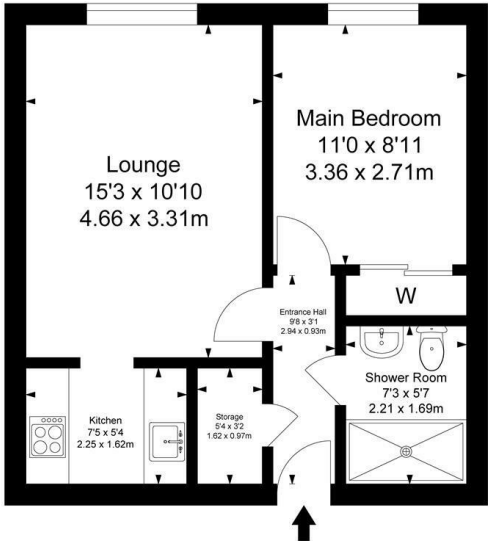


Council Tax Band: B

Floor Plans

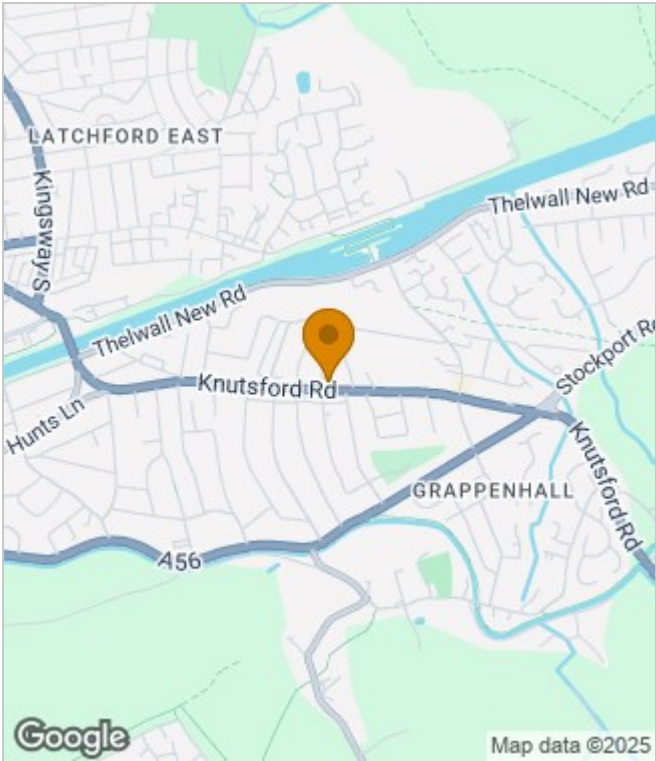
Oulton Court, Grappenhall

Approximate Gross Internal Area :-  
Total :- 39.67 sq m / 427 sq ft

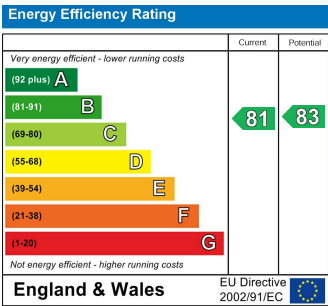


Surveyed and drawn by Lens Media for illustrative purposes only. Not to scale. Whilst every attempt was made to ensure the accuracy of the floor plan, all measurements are approximate and no responsibility is taken for any error.

Area Map



Energy Performance Graph



These particulars, whilst believed to be accurate are set out as a general outline only for guidance and do not constitute any part of an offer or contract. Intending purchasers should not rely on them as statements of representation of fact, but must satisfy themselves by inspection or otherwise as to their accuracy. No person in this firms employment has the authority to make or give any representation or warranty in respect of the property.