



146 Lock Lane, Partington, M31 4PW

£250,000



146 Lock Lane, Partington, M31 4PW

£250,000

A well maintained and light semi-detached property situated in a popular area accessed via double width gravel driveway and car port. Porch, hallway, lounge with feature fireplace open to dining area with patio sliding doors and modern white kitchen. Upstairs there are two double bedrooms, a single bedroom and a family bathroom. There is a good sized garden with lawn, decking and gravel areas.

Description

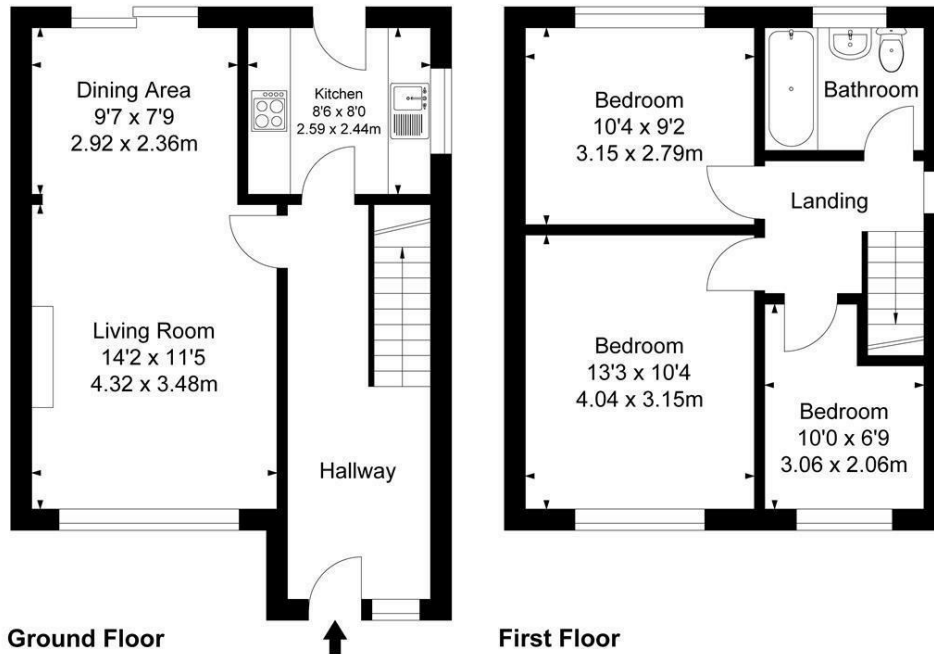


Council Tax Band:

Floor Plans

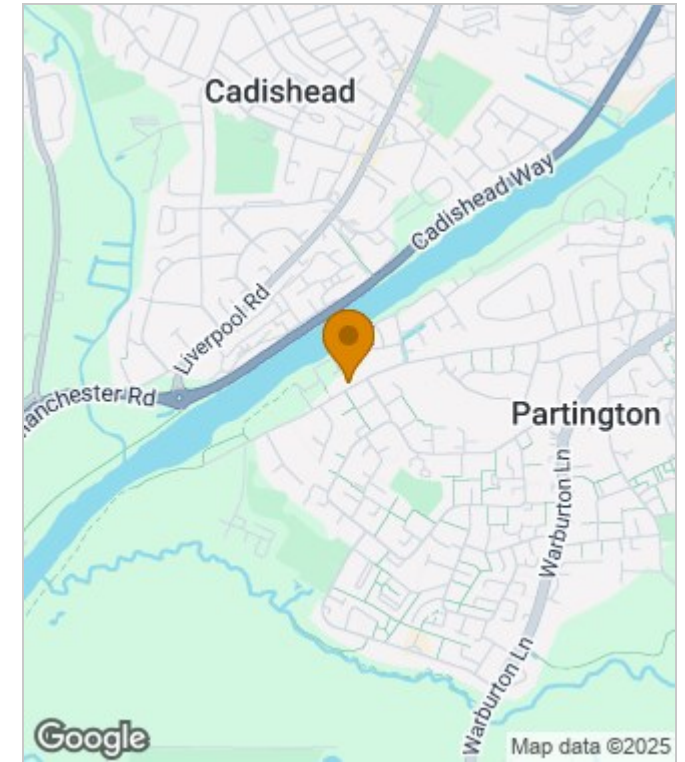
Lock Lane, Partington

Approximate Gross Internal Area :-
 Ground Floor :- 41.25 sq m / 444 sq ft
 First Floor :- 38.65 sq m / 416 sq ft
 Total :- 79.90 sq m / 860 sq ft

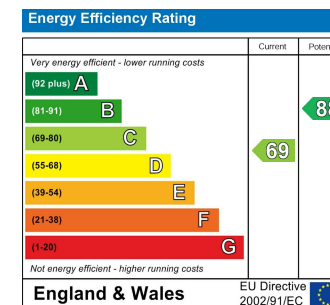


Surveyed and drawn by Lens Media for illustrative purposes only. Not to scale. Whilst every attempt was made to ensure the accuracy of the floor plan, all measurements are approximate and no responsibility is taken for any error.

Area Map



Energy Performance Graph



These particulars, whilst believed to be accurate are set out as a general outline only for guidance and do not constitute any part of an offer or contract. Intending purchasers should not rely on them as statements of representation of fact, but must satisfy themselves by inspection or otherwise as to their accuracy. No person in this firm's employment has the authority to make or give any representation or warranty in respect of the property.