



7 The Square, Lymm, WA13 0HX

£390,000



7 The Square, Lymm, WA13 0HX

£390,000

Positioned alongside the tranquil Bridgewater canal, this pretty cottage boasts stunning views from every window, allowing you to immerse yourself in the serene beauty of the waterway.

As you step inside, you will be greeted by an inviting reception room with feature fire place, a modern fitted kitchen that is both stylish and functional, perfect for those who enjoy cooking and entertaining and a great sized dining room / garden room with patio doors onto the rear courtyard and a downstairs WC. To the first floor there are two good sized bedrooms and a bathroom.

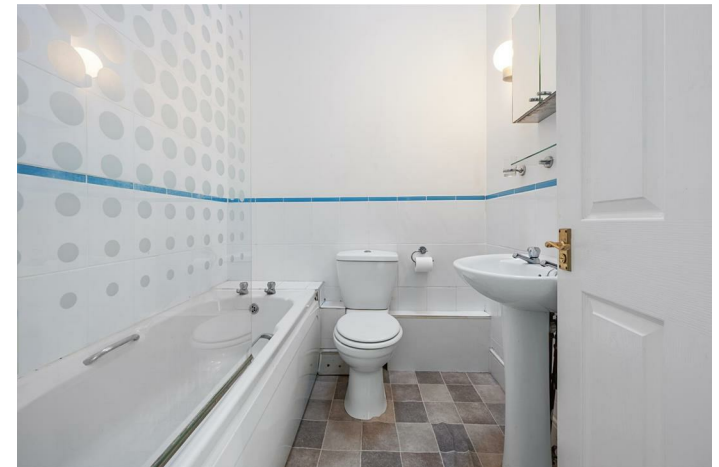
The cottage features a lovely courtyard garden, providing a private outdoor space where you can unwind or enjoy BBQS and drinks friends and family. This quaint garden is perfect for enjoying the fresh air and the peaceful sounds and views of the canal.

Living in the village centre means you will have easy access to local amenities, shops, and delightful eateries, all within a short stroll. The community spirit in Lymm is vibrant, making it an ideal place to call home.

This cottage is a wonderful and rare opportunity to experience the charm of village life while enjoying the beauty of the canal right at your doorstep.

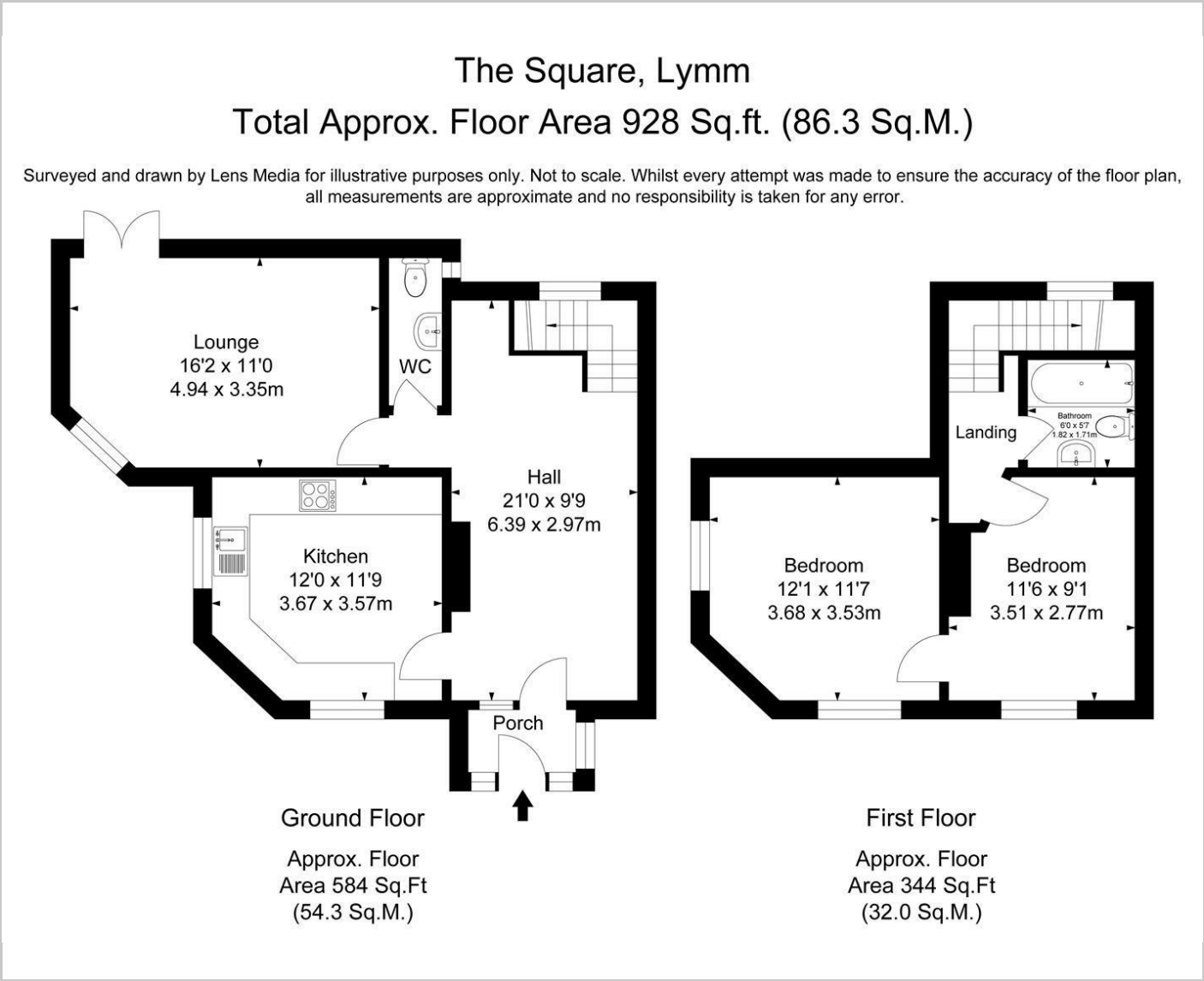
Description

- Beautiful Canal Side Cottage
- Village Center Location
- Gorgeous views from every window
- Sunny Courtyard Garden
- Pretty Cottage close to shops , cafes and bars.



Council Tax Band: C

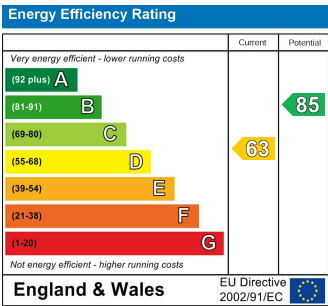
Floor Plans



Area Map



Energy Performance Graph



These particulars, whilst believed to be accurate are set out as a general outline only for guidance and do not constitute any part of an offer or contract. Intending purchasers should not rely on them as statements of representation of fact, but must satisfy themselves by inspection or otherwise as to their accuracy. No person in this firms employment has the authority to make or give any representation or warranty in respect of the property.