



57 Lakenheath Crescent, Great Sankey, Warrington, WA5 3UE

**£600,000**





## 57 Lakenheath Crescent, Great Sankey, Warrington, WA5 3UE

£600,000

Located on the desirable Lakenheath Crescent, this beautiful house offers an exceptional living experience. Positioned on a corner plot, the property boasts a high specification interior, showcasing a modern design that has been meticulously crafted to a high standard.

With five spacious bedrooms, including a large master suite complete with a dressing area and ensuite bathroom, and a further ensuite off bedroom 2, this home provides ample space for families or those who enjoy entertaining guests. The property features three well-appointed reception rooms, allowing for versatile living arrangements and the perfect setting for both relaxation and social gatherings.

The remodelling of the open plan kitchen diner has transformed the space into a contemporary entertaining / family dining area, the bi-fold doors allow access out to the garden, the property is complemented by both rear and side gardens, which are designed for low maintenance, making it easy to enjoy the outdoors without the burden of extensive upkeep. The south-west facing garden is perfect for soaking up the sun, providing a delightful space for outdoor activities or simply unwinding and enjoying drinks and BBQs with friends.

The conversion of the double garage has provided a flexible space, ideal for use as an office, gym, playroom or salon space, catering to the needs of contemporary lifestyles. Additionally, the property has a useful utility room and downstairs WC.

This remarkable home in Great Sankey is not just a property; it is a lifestyle choice that combines comfort, style, and convenience. With its prime location and impressive features, it is an opportunity not to be missed.

## Description

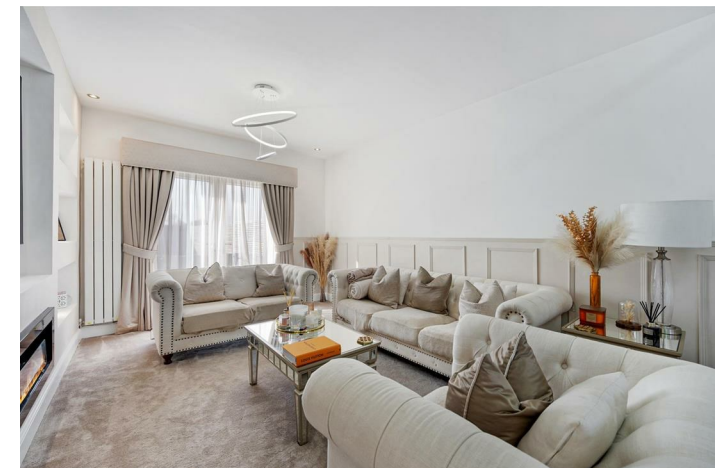
Located on the desirable Lakenheath Crescent, this beautiful house offers an exceptional living experience. Positioned on a corner plot, the property boasts a high specification interior, showcasing a modern design that has been meticulously crafted to a high standard.

With five spacious bedrooms, including a large master suite complete with a dressing area and ensuite bathroom, and a further ensuite off bedroom 2, this home provides ample space for families or those who enjoy entertaining guests. The property features three well-appointed reception rooms, allowing for versatile living arrangements and the perfect setting for both relaxation and social gatherings.

The remodelling of the open plan kitchen diner has transformed the space into a contemporary entertaining / family dining area, the bi-fold doors allow access out to the garden, the property is complemented by both rear and side gardens, which are designed for low maintenance, making it easy to enjoy the outdoors without the burden of extensive upkeep. The south-west facing garden is perfect for soaking up the sun, providing a delightful space for outdoor activities or simply unwinding and enjoying drinks and BBQs with friends.

The conversion of the double garage has provided a flexible space, ideal for use as an office, gym, playroom or salon space, catering to the needs of contemporary lifestyles. Additionally, the property has a useful utility room and downstairs WC.

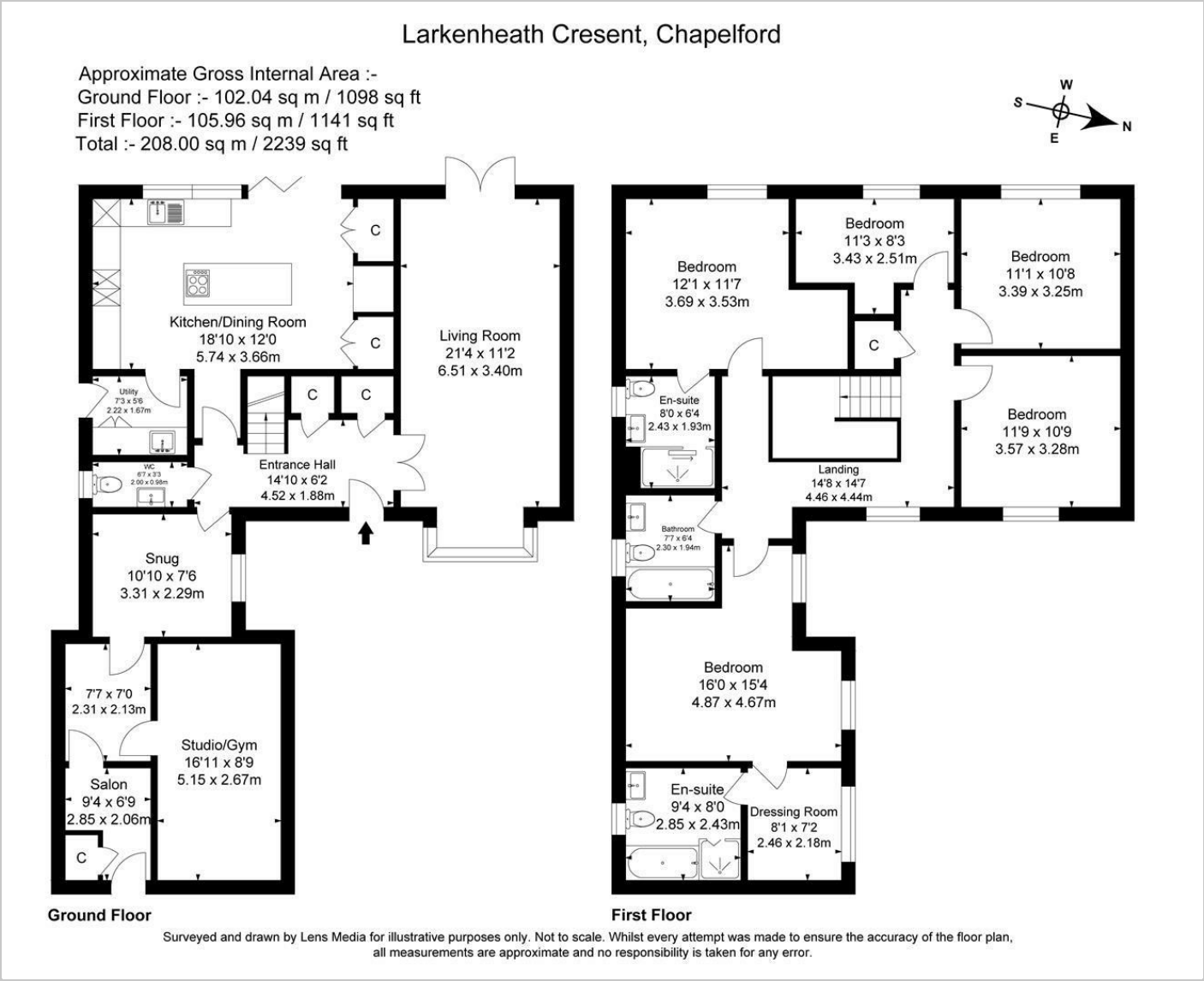
This remarkable home in Great Sankey is not just a property; it is a lifestyle choice that combines comfort, style, and convenience. With its prime location and impressive features, it is an opportunity not to be missed.



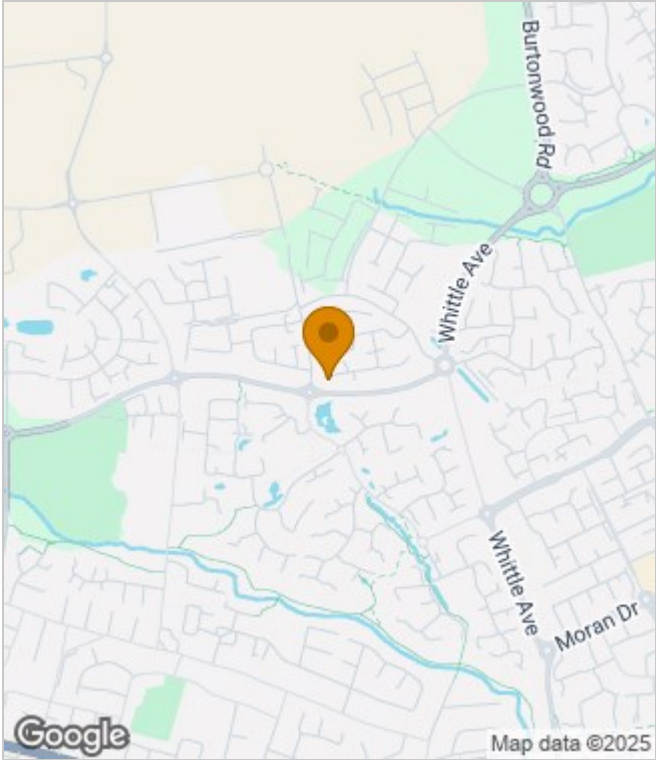
Council Tax Band: F



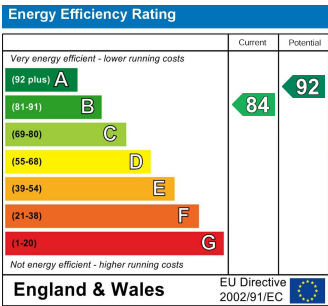
Floor Plans



Area Map



Energy Performance Graph



These particulars, whilst believed to be accurate are set out as a general outline only for guidance and do not constitute any part of an offer or contract. Intending purchasers should not rely on them as statements of representation of fact, but must satisfy themselves by inspection or otherwise as to their accuracy. No person in this firms employment has the authority to make or give any representation or warranty in respect of the property.