

34 Eagle Brow, Lymm, WA13 0LY

£775,000



34 Eagle Brow, Lymm, WA13 0LY

£775,000

PERIOD HOUSE, FOUR BEDROOMS, LARGE GARDEN AND DOUBLE GARAGE RIGHT IN THE CENTRE OF LYMM VILLAGE WHAT MORE COULD YOU ASK FOR?

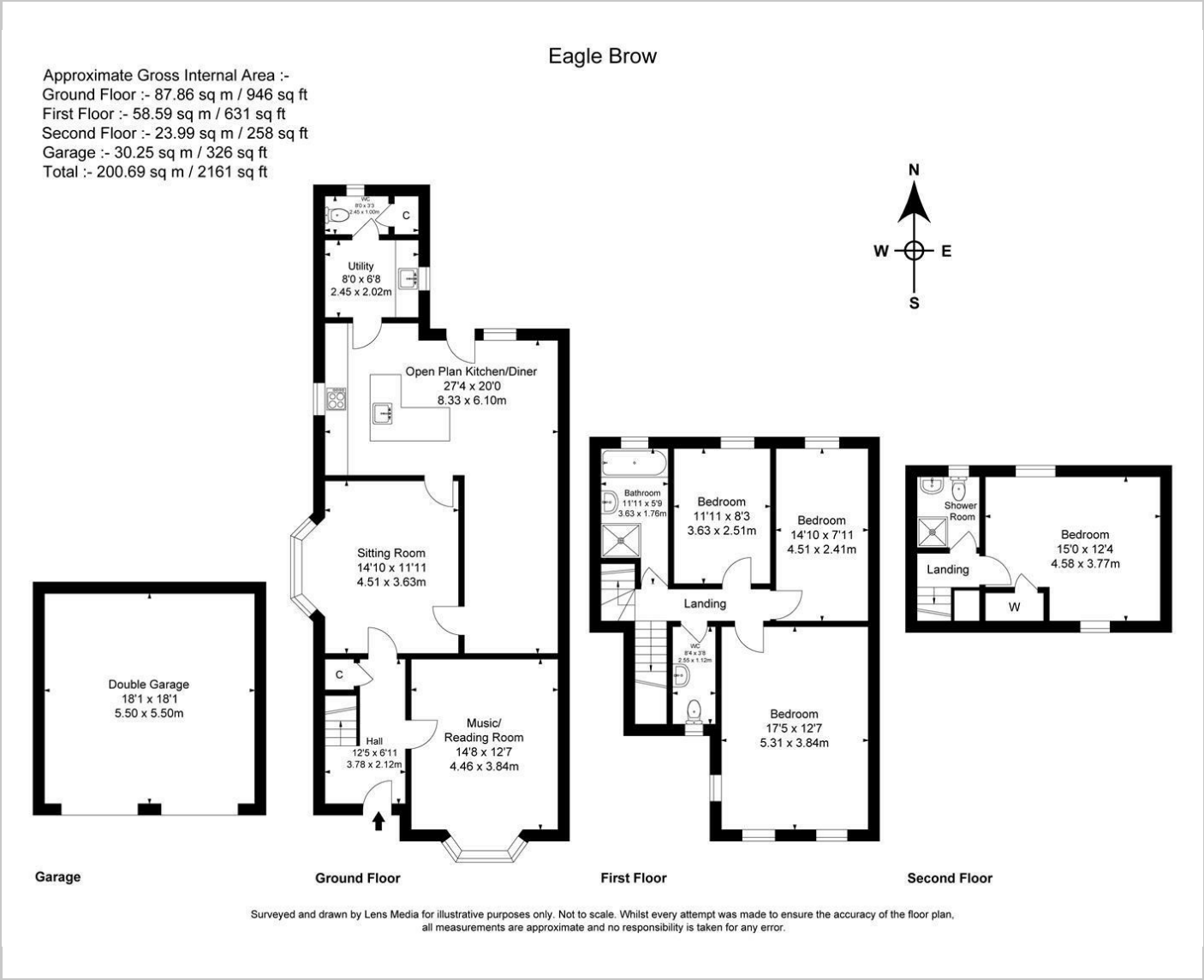
This period semi detached house occupies an elevated position in the centre of the Village with the advantage of a driveway leading to parking and a double garage. Front garden, porch, hall with original panelling, lounge to the front with bay sash window, sitting room to the side and further reception room/office area leading into the modern dining kitchen with vaulted ceiling. Utility room and wc. On the first floor there is the large master bedroom to the front with dual aspect, two further bedrooms, bathroom and separate wc. On the second floor there is a double bedroom and ensuite. Externally there is a large mature rear garden with lawn, walls, patio areas, vegetable patches etc together with parking and double garage. There is also access into Davies Way Car Park. NO CHAIN

Description



null
Council Tax Band: F
Available:

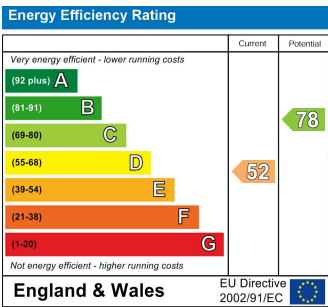
Floor Plans



Area Map



Energy Performance Graph



These particulars, whilst believed to be accurate are set out as a general outline only for guidance and do not constitute any part of an offer or contract. Intending purchasers should not rely on them as statements of representation of fact, but must satisfy themselves by inspection or otherwise as to their accuracy. No person in this firms employment has the authority to make or give any representation or warranty in respect of the property.