



2 Browning Drive, Winwick, Warrington, WA2 8XL

£425,000



2 Browning Drive, Winwick, Warrington, WA2 8XL

£425,000

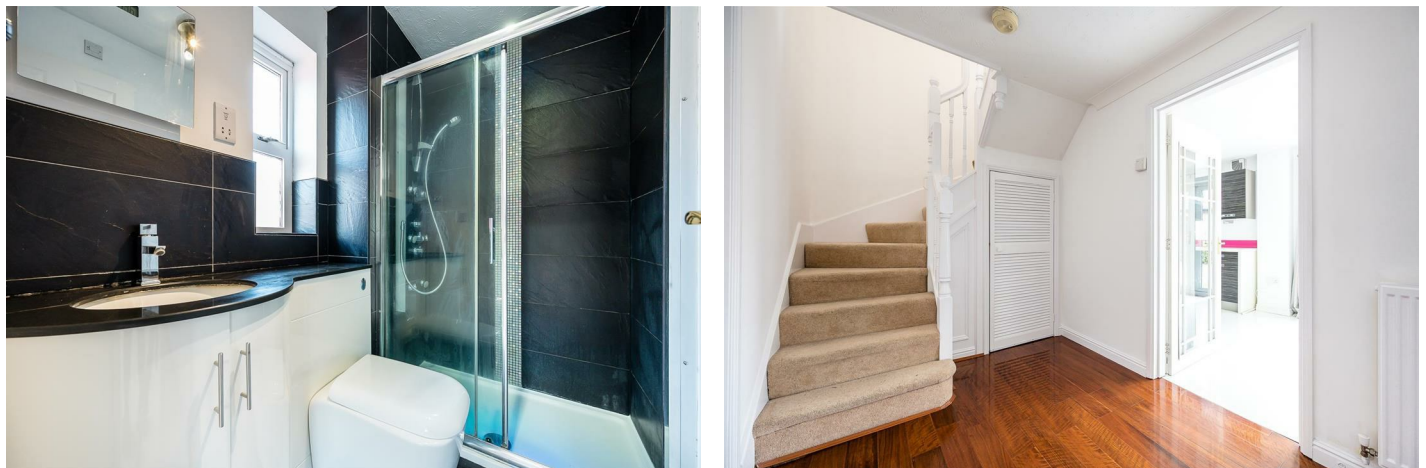
Situated in the sought-after Winwick Park development, this property is located on a corner plot just a stone's throw away from the green and children's park making it an ideal location for families. Additionally, its proximity to local amenities and excellent motorway access further enhances its appeal for those seeking convenience in their daily lives.

This delightful house offers a perfect family home, the ground floor has 2 reception rooms, a cosy living room with bay window and an open plan modern fitted kitchen / dining room with patio doors that open onto the garden, there is also a W/C and great sized garage.

To the first floor there is a master bedroom with ensuite, 3 further good-sized bedrooms and a family bathroom.

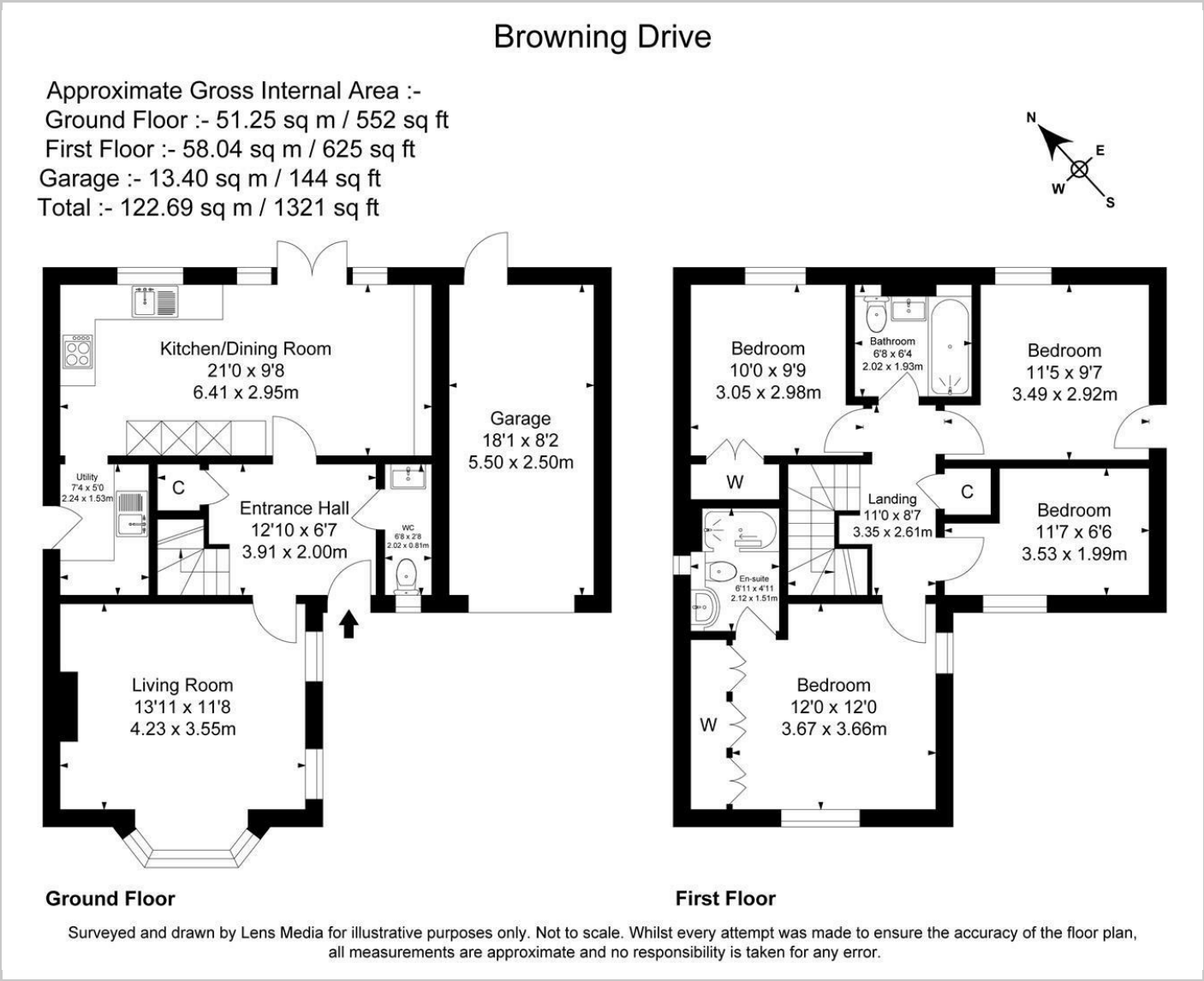
Externally there is a driveway with parking for multiple cars, to the rear there is a larger than average garden with storage shed. This property is a rare find as it is available with no chain, allowing for a smoother transaction for potential buyers. Don't miss the opportunity to make this house your home and enjoy the best of what Winwick has to offer.

Description

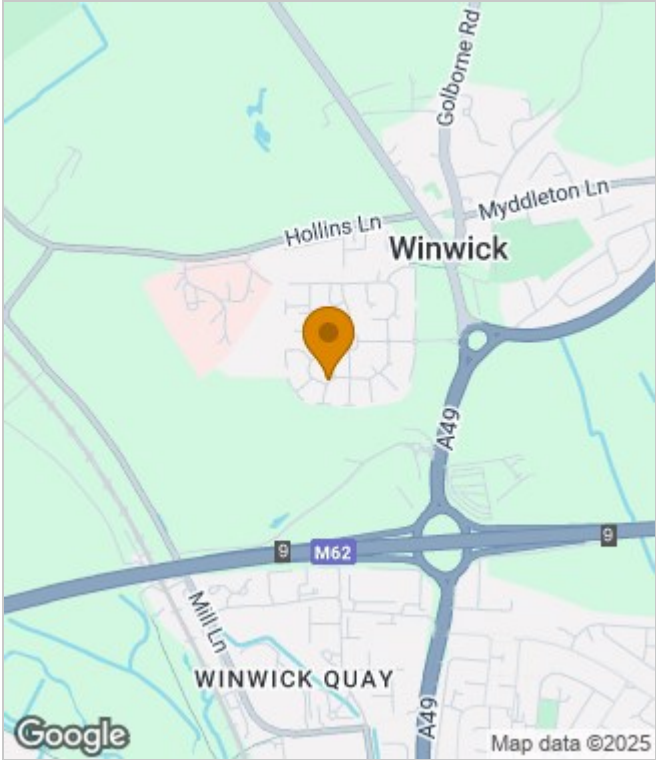


Council Tax Band: E

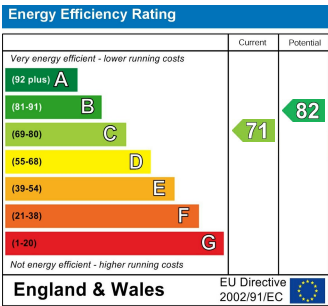
Floor Plans



Area Map



Energy Performance Graph



These particulars, whilst believed to be accurate are set out as a general outline only for guidance and do not constitute any part of an offer or contract. Intending purchasers should not rely on them as statements of representation of fact, but must satisfy themselves by inspection or otherwise as to their accuracy. No person in this firms employment has the authority to make or give any representation or warranty in respect of the property.