



48 The Crescent, Lymm, WA13 0JY

£189,950



48 The Crescent, Lymm, WA13 0JY

£189,950

FABULOUS FIRST FLOOR APARTMENT SUITABLE FOR FIRST TIME BUYERS, DOWNSIZERS, INVESTORS ETC SITUATED WITHIN WALKING DISTANCE OF LYMM VILLAGE CENTRE. Pathway with access from The Crescent and the rear into the well stocked garden with borders, lawn and shed. Private entrance to the apartment, hallway, large living/dining room with two windows overlooking The Crescent, two double bedrooms, one with fitted wardrobes, modern wet room and fitted kitchen with white gloss units and dual aspect. Gas central heating and double glazing.

Description



null

Council Tax Band:

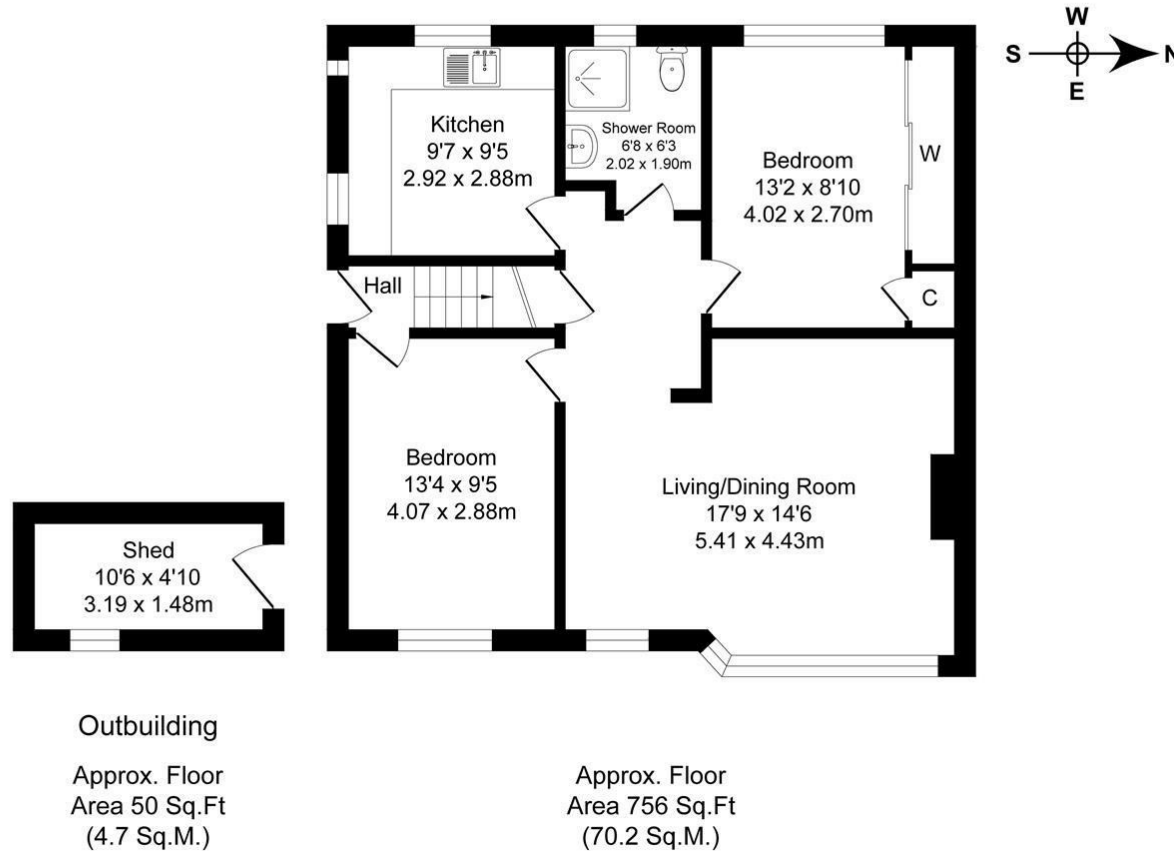
Available:

Floor Plans

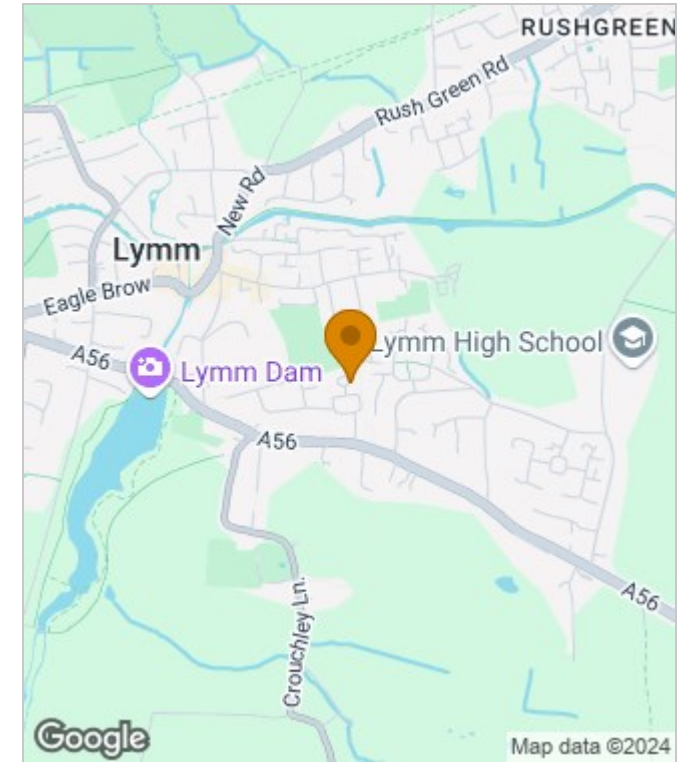
The Crescent

Total Approx. Floor Area 806 Sq.ft. (74.9 Sq.M.)

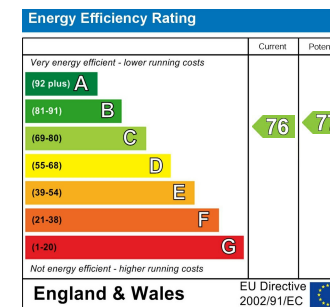
Surveyed and drawn by Lens Media for illustrative purposes only. Not to scale. Whilst every attempt was made to ensure the accuracy of the floor plan, all measurements are approximate and no responsibility is taken for any error.



Area Map



Energy Performance Graph



These particulars, whilst believed to be accurate are set out as a general outline only for guidance and do not constitute any part of an offer or contract. Intending purchasers should not rely on them as statements of representation of fact, but must satisfy themselves by inspection or otherwise as to their accuracy. No person in this firm's employment has the authority to make or give any representation or warranty in respect of the property.