



110 Waste Lane, Thelwall, Warrington, WA4 3JR

£950,000



110 Weaste Lane, Thelwall, Warrington, WA4 3JR

£950,000

Nestled in the charming Weaste Lane of Thelwall, this delightful property offers a blend of space, comfort, and picturesque views. As you step inside, you are greeted by three inviting reception rooms, an open plan kitchen diner / family room with underfloor heating and an island perfect for entertaining guests, a cosy snug, and a large L shaped dining / living room with bi-folding doors onto the beautiful rear garden, there is a handy utility room and cloak room wc.

With five generously sized double bedrooms and three bathrooms, this house provides ample space for a growing family or those who love to host visitors. The property boasts a substantial 3,514 sq ft of living space, ensuring everyone has room to relax and enjoy. One of the highlights of this home is the stunning farmland views and the beautifully landscaped gardens to the front and rear that offer a perfect setting for outdoor gatherings and summer barbecues.

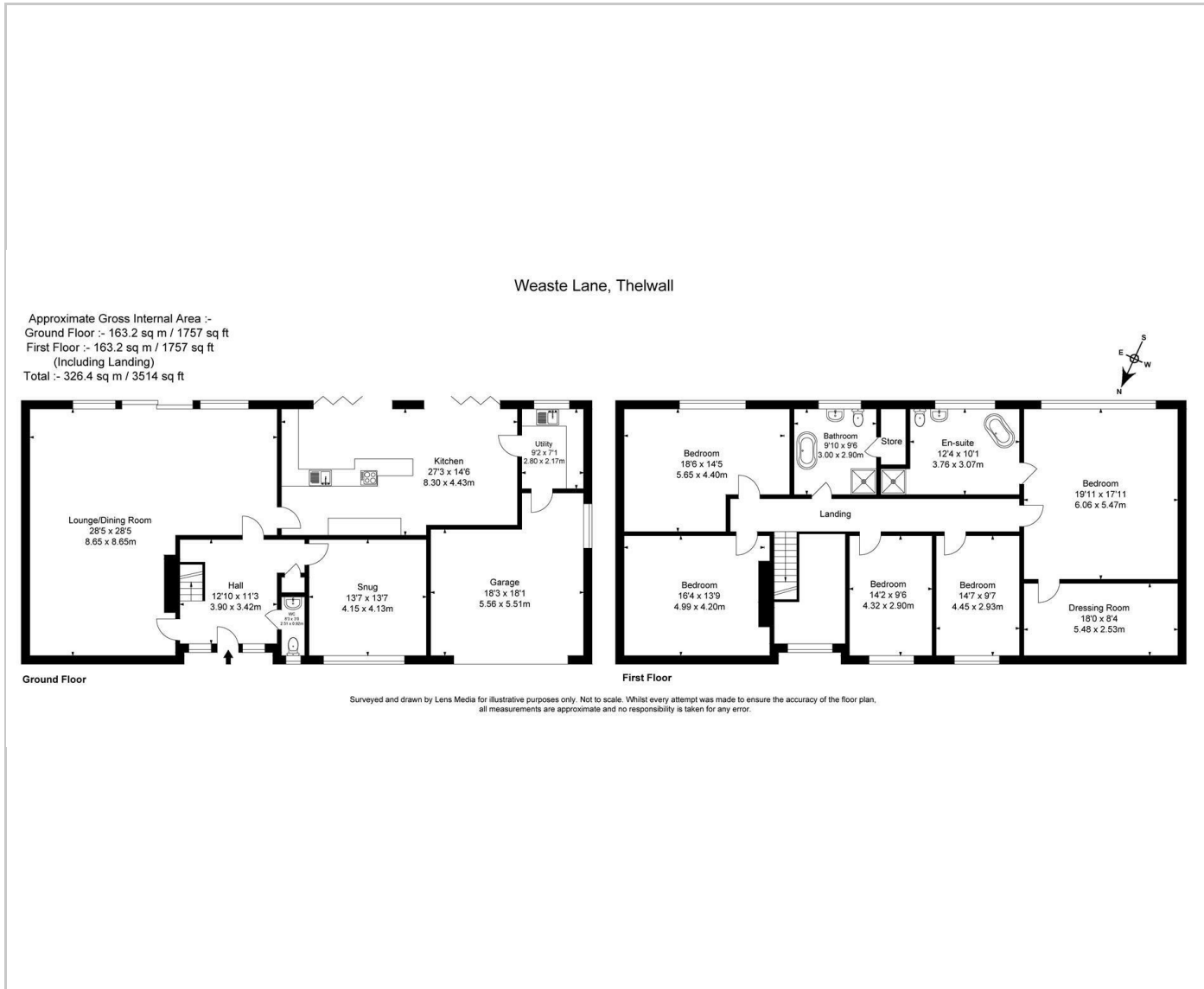
Conveniently located in a semi-rural area, you can enjoy the peace and quiet of the countryside while still being within walking distance to the trans penine trail, the bridge water canal and Thelwall village, where you will find excellent pubs, parks and local shops. Don't miss out on the chance to make this house your home.

Description

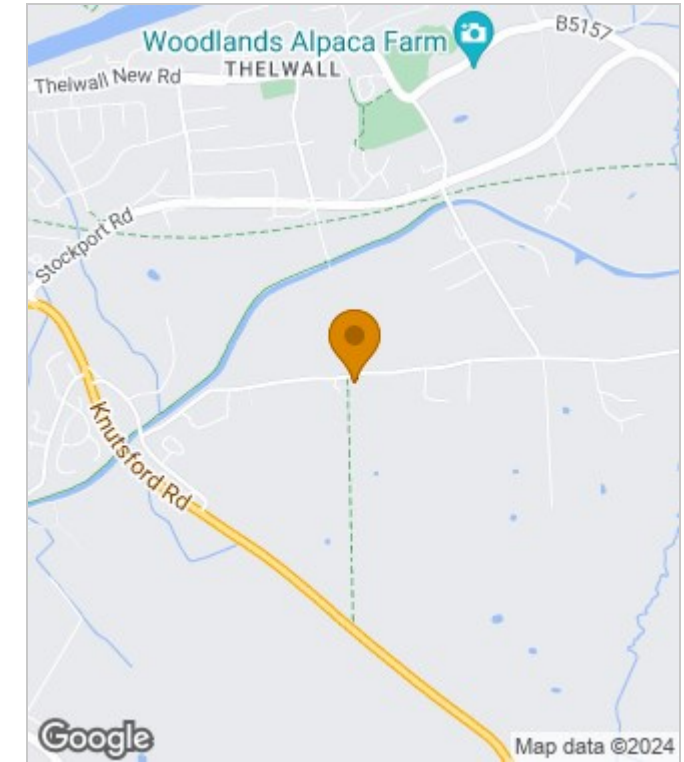


null
Council Tax Band: G
Available:

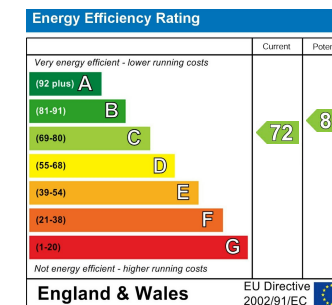
Floor Plans



Area Map



Energy Performance Graph



These particulars, whilst believed to be accurate are set out as a general outline only for guidance and do not constitute any part of an offer or contract. Intending purchasers should not rely on them as statements of representation of fact, but must satisfy themselves by inspection or otherwise as to their accuracy. No person in this firm's employment has the authority to make or give any representation or warranty in respect of the property.