



32 Ferryside, Thelwall, Warrington, Cheshire, WA4 2GY

£170,000



32 Ferryside, Thelwall, Warrington, Cheshire, WA4 2GY

£170,000

A FABULOUS RECENTLY REFURBISHED GROUND FLOOR APARTMENT SITUATED WITHIN A VERY POPULAR DEVELOPMENT CLOSE TO THE MANCHESTER SHIP CANAL, TRANS PENNINE TRAIL AND LOCAL AMENITIES IN THELWALL. The apartment is access from the car park with entrance hall, private entrance hall with tiled floor, spacious living/dining area with window to the rear and brand new kitchen with integrated appliances. The master bedroom has fitted wardrobes and an ensuite, a further double bedroom with fitted wardrobes and a bathroom. NEW COMBI GCH BOILER. NEW RADIATORS. CARPETS. BLINDS ETC. NO CHAIN. READY TO MOVE INTO.

Description



null

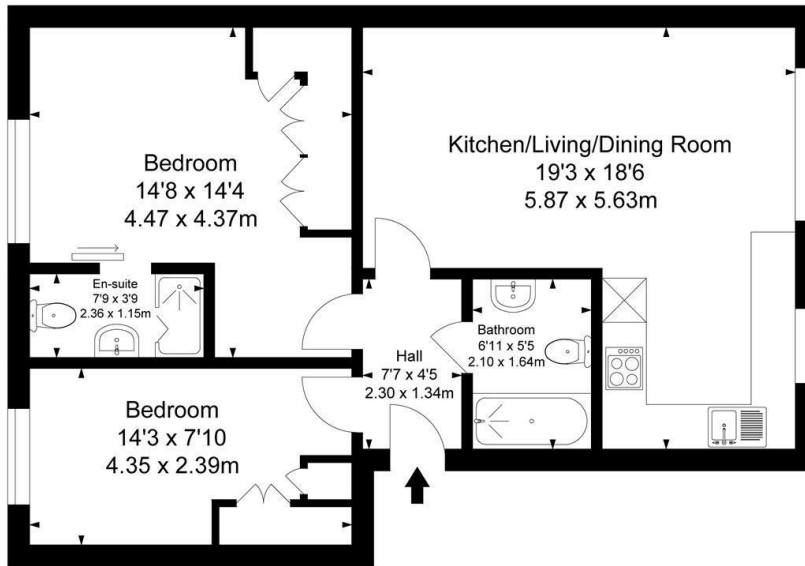
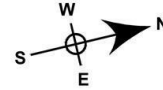
Council Tax Band: B

Available:

Floor Plans

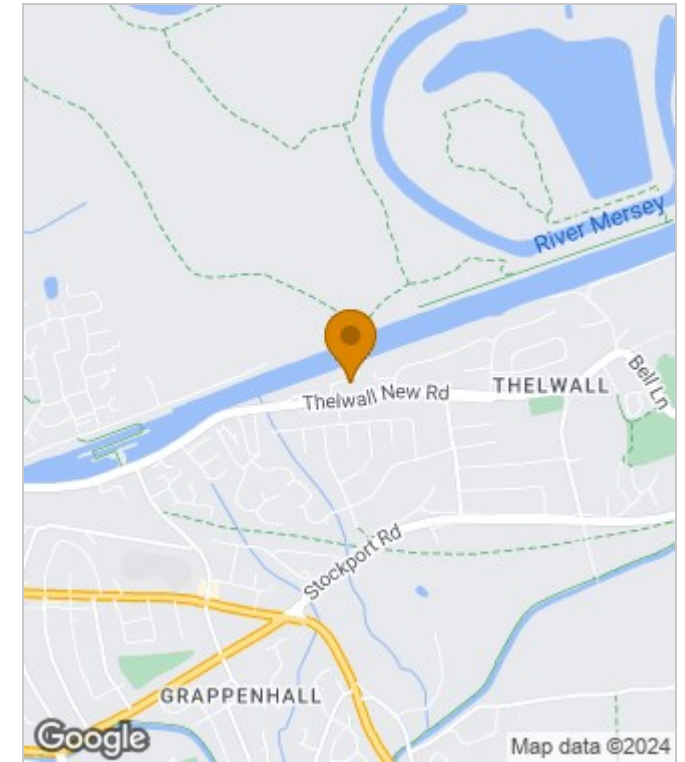
Ferryside

Approximate Gross Internal Area :-
65.00 sq m / 700 sq ft



Surveyed and drawn by Lens Media for illustrative purposes only. Not to scale. Whilst every attempt was made to ensure the accuracy of the floor plan, all measurements are approximate and no responsibility is taken for any error.

Area Map



Energy Performance Graph

Energy Efficiency Rating		Current	Potential
Very energy efficient - lower running costs			
(92 plus) A			
(81-91) B			
(69-80) C			
(55-68) D			
(39-54) E			
(21-38) F			
(1-20) G			
Not energy efficient - higher running costs			
England & Wales	EU Directive 2002/91/EC		

These particulars, whilst believed to be accurate are set out as a general outline only for guidance and do not constitute any part of an offer or contract. Intending purchasers should not rely on them as statements of representation of fact, but must satisfy themselves by inspection or otherwise as to their accuracy. No person in this firm's employment has the authority to make or give any representation or warranty in respect of the property.