



Apartment 5 Waterbridge Court, Thornley Close, Lymm, WA13 0EL

£159,950





## Apartment 5 Waterbridge Court, Thornley Close, Lymm, WA13 0EL

£159,950

This is a great first floor spacious apartment, very light and well maintained. The apartment comprises a hallway, lounge with window to side and open to a dining room with window and Juliette balcony overlooking the communal gardens. There is a separate modern kitchen, two double bedrooms (one with fitted wardrobes) and a bathroom with shower over the bath and built in cupboards. There is ample parking to the rear of the building and communal gardens next to the Bridgewater Canal.



## Description

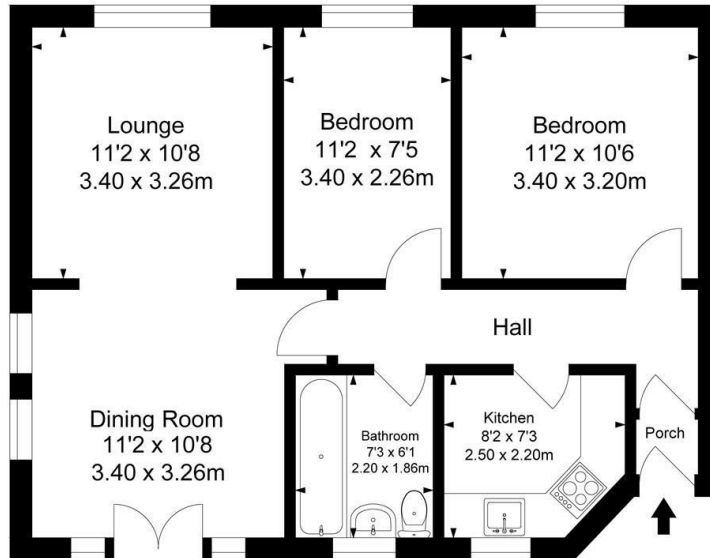


null  
Council Tax Band: B  
Available:

## Floor Plans

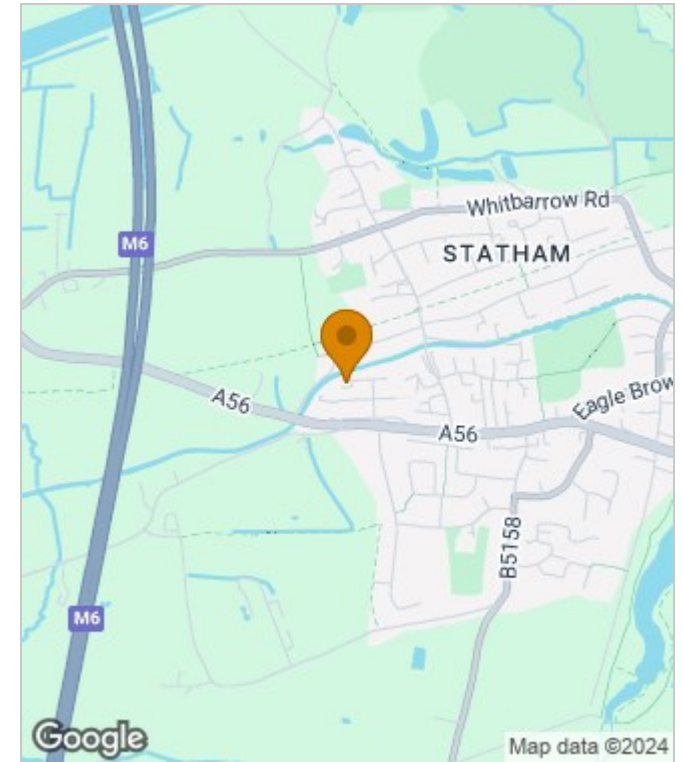
### Waterbridge Court

Approximate Gross Internal Area  
61.12 sq m / 657 sq ft



Surveyed and drawn by Lens Media for illustrative purposes only. Not to scale. Whilst every attempt was made to ensure the accuracy of the floor plan, all measurements are approximate and no responsibility is taken for any error.

## Area Map



## Energy Performance Graph

Energy Efficiency Rating		Current	Potential
Very energy efficient - lower running costs			
(92 plus) <b>A</b>			
(81-91) <b>B</b>			
(69-80) <b>C</b>		80	80
(55-68) <b>D</b>			
(39-54) <b>E</b>			
(21-38) <b>F</b>			
(1-20) <b>G</b>			
Not energy efficient - higher running costs			
<b>England &amp; Wales</b>	EU Directive 2002/91/EC		

These particulars, whilst believed to be accurate are set out as a general outline only for guidance and do not constitute any part of an offer or contract. Intending purchasers should not rely on them as statements of representation of fact, but must satisfy themselves by inspection or otherwise as to their accuracy. No person in this firm's employment has the authority to make or give any representation or warranty in respect of the property.