



4 The Brow, Lymm, Cheshire, WA13 0GL

£289,950





## 4 The Brow, Lymm, Cheshire, WA13 0GL

£289,950

A high specification apartment in the center of Lymm Village with two double bedrooms and two parking spaces. Don't miss out on this beautifully appointed spacious apartment comprising entrance hall with video entry system, handy storage cupboard, large living/dining room with two windows to the side of the building open to a modern kitchen with integrated appliances, porcelain tiled floor and store cupboard. The master bedroom has fitted wardrobes and ensuite shower room, there is a further double bedroom again with fitted furniture and a bathroom. The apartment has been improved over recent years by the current owners and would be ideal for a professional wishing to be in the centre of the village with the restaurants, bars and shops a mere few minutes away. Investors may also be interested as this property has unusually low service fees at £66 per month, and would achieve a good yield once rented out. There is also two parking spaces behind the building.



## Description



## Situation



null

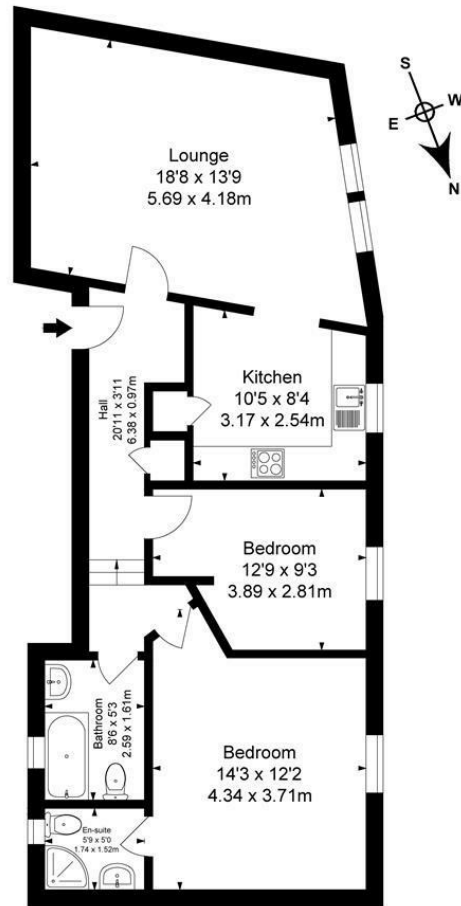
Council Tax Band: D

Available:

## Floor Plans

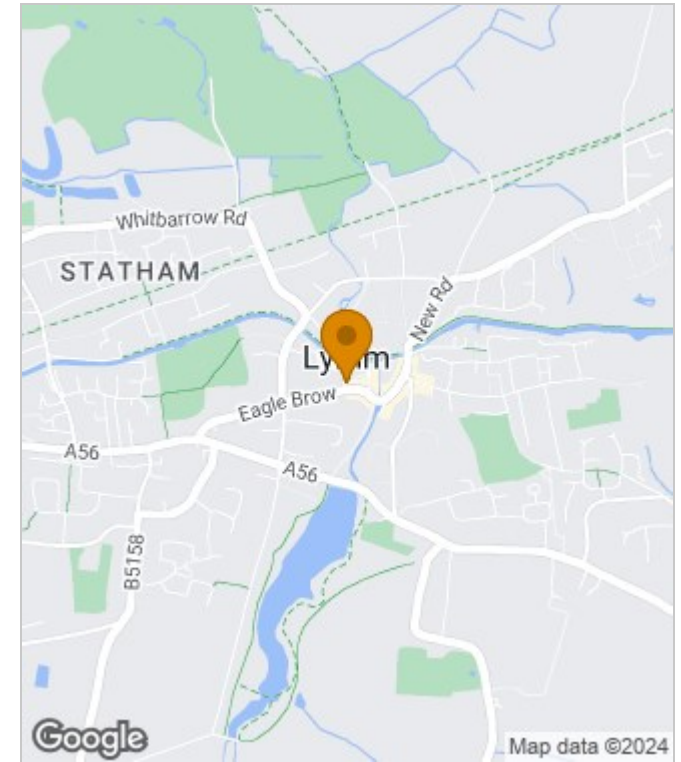
### The Brow, Eagle Brow Lymm

Approximate Gross Internal Area :  
76.29 sq m / 821 sq ft

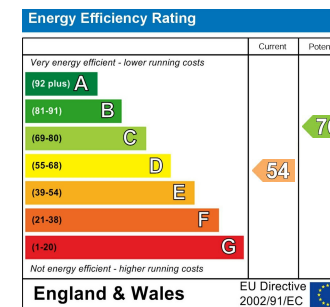


Surveyed and drawn by Lens Media for illustrative purposes only. Not to scale. Whilst every attempt was made to ensure the accuracy of the floor plan, all measurements are approximate and no responsibility is taken for any error.

## Area Map



## Energy Performance Graph



These particulars, whilst believed to be accurate are set out as a general outline only for guidance and do not constitute any part of an offer or contract. Intending purchasers should not rely on them as statements of representation of fact, but must satisfy themselves by inspection or otherwise as to their accuracy. No person in this firm's employment has the authority to make or give any representation or warranty in respect of the property.

10 Eagle Brow, Lymm, Warrington, Cheshire, WA13 0LJ

Tel: 01925 210 250 Email: [info@declanjames.co.uk](mailto:info@declanjames.co.uk) [www.declanjames.co.uk](http://www.declanjames.co.uk)