



30 Oulton Court, Grappenhall, WA4 2NT

£70,000





## 30 Oulton Court, Grappenhall, WA4 2NT

£70,000

This delightful 1st Floor apartment features cosy living room, one double bedroom with mirrored fitted wardrobes, a fitted kitchen and a shower room with walk in shower. One of the highlights of this property is its pretty communal gardens, complete with outdoor seating where you can enjoy the fresh air and tranquility. Additionally, you'll have access to communal facilities including a washroom and lounge perfect for socialising with fellow residents. With parking available for one vehicle, you'll have the convenience of coming and going as you please. The property is located a short walk to the bus route, so you'll have easy access to explore the surrounding area , with local amenities just a stone's throw away, everything you need is within reach.

## Description



## Situation



null

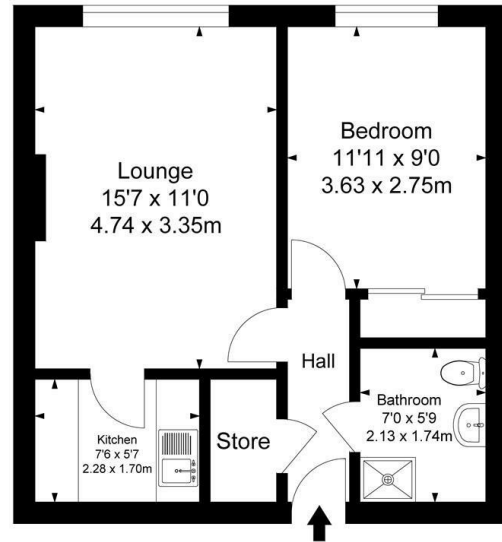
Council Tax Band: B

Available:

## Floor Plans

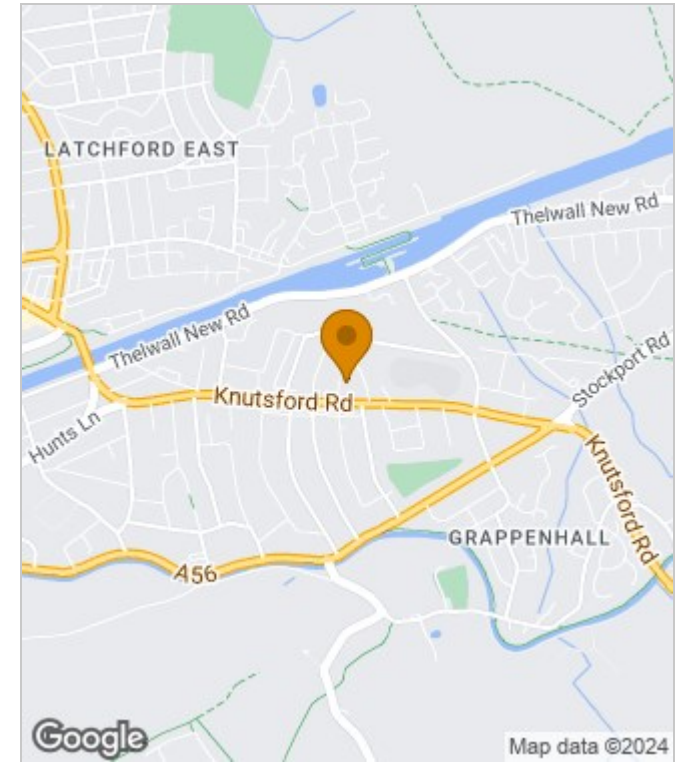
### Oulton Court, Grappenhall

Approximate Gross Internal Area :-  
41.18 sq m / 443 sq ft

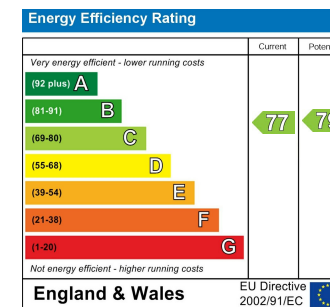


Surveyed and drawn by Lens Media for illustrative purposes only. Not to scale. Whilst every attempt was made to ensure the accuracy of the floor plan, all measurements are approximate and no responsibility is taken for any error.

## Area Map



## Energy Performance Graph



These particulars, whilst believed to be accurate are set out as a general outline only for guidance and do not constitute any part of an offer or contract. Intending purchasers should not rely on them as statements of representation of fact, but must satisfy themselves by inspection or otherwise as to their accuracy. No person in this firm's employment has the authority to make or give any representation or warranty in respect of the property.