



**DECLAN
JAMES** ESTATE
AGENTS



24 Claydon Gardens, Rixton, Warrington, Cheshire, WA3 6FA

£550,000



24 Claydon Gardens, Rixton, Warrington, Cheshire, WA3 6FA

£550,000

A RECENTLY REFURBISHED DETACHED HOUSE SITUATED ON A POPULAR DEVELOPMENT IN SEMI RURAL LOCATION. Driveway leading to the attached garage. Entrance hall, cloakroom/wc, and lounge to the front with bay window and wood burning stove. The wow factor for this particular property is the large L shaped modern kitchen/dining/family room with french doors leading out into the landscaped garden. Upstairs there is a master bedroom with ensuite, three further double bedrooms and a family bathroom. The rear garden has been professionally landscaped with paved entertaining areas, lawn and borders. DONT MISS OUT ON THIS READY TO MOVE INTO EXECUTIVE DETACHED.

Description



null

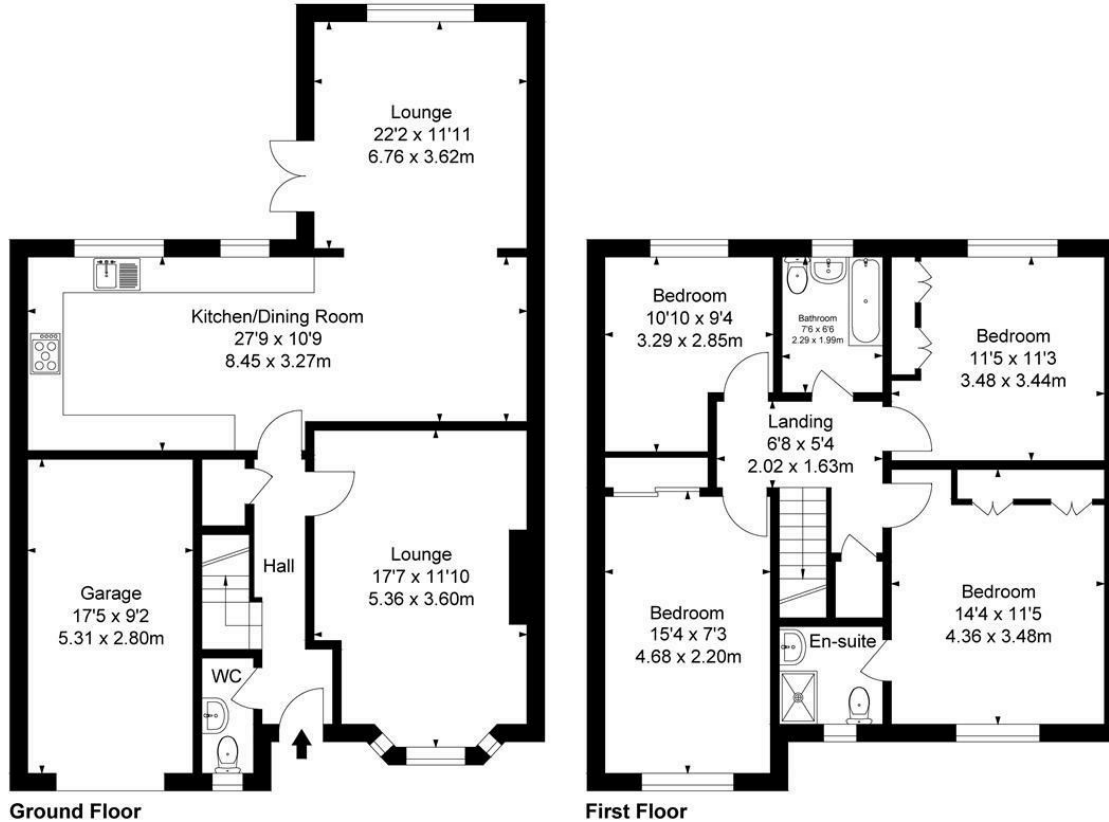
Council Tax Band: F

Available:

Floor Plans

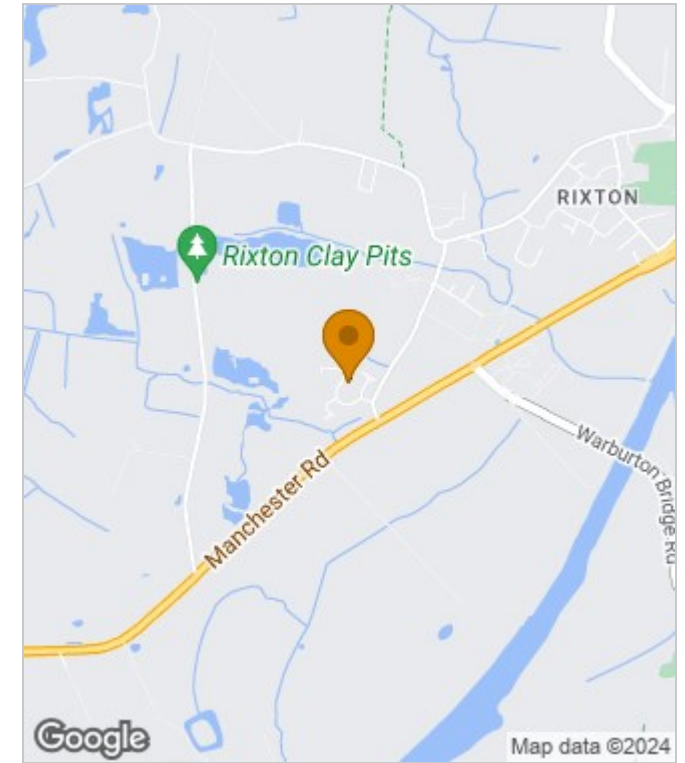
Claydon Gardens, Rixton

Approximate Gross Internal Area :-
 Ground Floor :- 84.92 sq m / 914 sq ft
 First Floor :- 69.07 sq m / 743 sq ft
 Total :- 153.99 sq m / 1658 sq ft

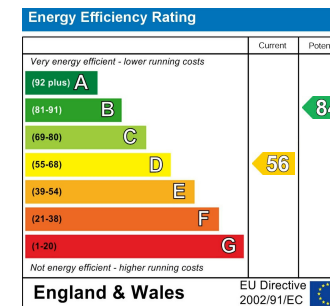


Surveyed and drawn by Lens Media for illustrative purposes only. Not to scale. Whilst every attempt was made to ensure the accuracy of the floor plan, all measurements are approximate and no responsibility is taken for any error.

Area Map



Energy Performance Graph



These particulars, whilst believed to be accurate are set out as a general outline only for guidance and do not constitute any part of an offer or contract. Intending purchasers should not rely on them as statements of representation of fact, but must satisfy themselves by inspection or otherwise as to their accuracy. No person in this firm's employment has the authority to make or give any representation or warranty in respect of the property.